

---

## Utilise the full value of your meter data

- Get a complete overview of the water loss in your network
- Achieve detailed insights into your districts
- Manage events quickly and efficiently







## Your analytics toolkit

The value of your smart meter data goes far beyond accurate billing. With the right tools, you can unlock its full potential and transform it into actionable insights.

Kamstrup's analytics platform for smart water metering effectively takes you from imagining "What if" to knowing "How to" and gives you the knowledge needed to effectively target your efforts.

Your meter data is automatically organised, visualised and analysed to give you a total overview of your distribution network with detailed incident management and insights into the consumption, night flow and water loss.



# Water Intelligence

## – turning raw data into value and overview

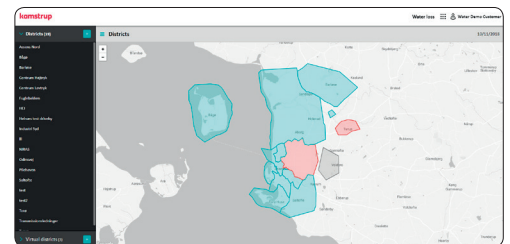
Water Intelligence gives you a complete overview of your distribution network split into districts.

For each district, you get detailed information on inlet flow, consumption, night flow and water loss, which lets you follow developments closely, target your efforts and act as soon as the water loss increases in one district.

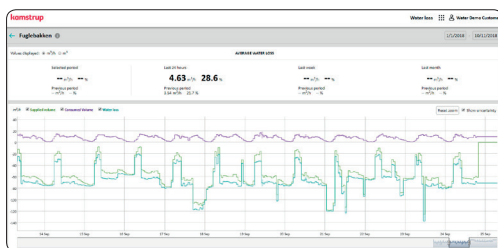
Managing your districts is straightforward and easy. You simply outline the individual districts in your supply area by the drop of a mouse on the map. The system validates the data quality and minimises the risk of errors by only allowing each meter to be included in one district.

### Your water loss visualised by district

A map of your supply area provides a constant overview of the water loss in your entire network. Intuitive colour coding of your districts immediately shows their status based on your pre-defined limits for acceptable water loss. This enables you to target your leak detection so you can react in a matter of hours instead of days.



Continuous monitoring and daily water balances also make it possible for you to follow developments and catch smaller leaks before they develop into large-scale bursts.



### Detailed insight into each individual district

For each of your districts you can dive into a detailed view of the water loss, supplied volume, consumed volume and night flow.

Choose and switch between views based on data from the last 24 hours, the last 7 days, the last month or specify the exact period you want to examine closer.

For each district, you define individual limits for the acceptable amount of water loss and what sets off an alarm. This ensures that they match circumstances like population, age and condition of pipes.

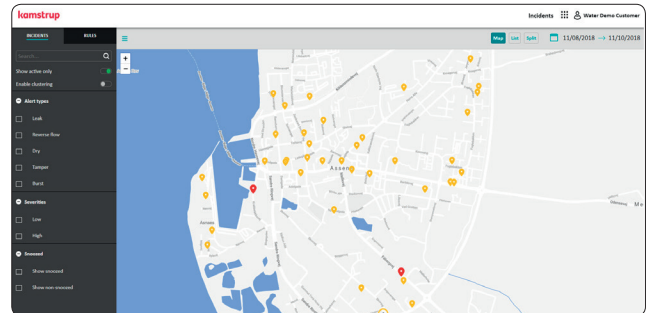
# Incidents

## – efficient event management

The Incidents system gives you an overview of the different digital events in your distribution network – and the tools to prioritise and handle them.

All active events are shown on a map clearly indicating their location and status, which makes them easy for you to act on.

Events include alarms and info codes from your smart meters, other devices and alarms concerning the water loss in your individual districts based on your pre-defined limits from the Water Intelligence module.



You decide which events you want to be informed about, how severely you want to rate them and how you want to be informed. This prevents an overflow of information and allows you to focus your work.

In addition, you can assign certain team members to certain events, and the “acknowledge” function ensures that you know exactly which events have been handled and which ones have not.

## To get started, you need:

- An existing READy installation either as stand-alone or hosted by Kamstrup
- All meters must be read via READy Mobile Reading or through a READy Network
- If the main- or district meters are not read by READy, flow data must be exported from your SCADA system through either an FTP export or through a web service

The implementation is done in close cooperation with Kamstrup to ensure that you get off to a good start.

For utilities using READy Mobile Reading, we recommend a bimonthly reading interval as a minimum, and more frequent meter readings will increase the value.

## Think forward

### Kamstrup A/S

Industrivej 28, Stilling  
DK-8660 Skanderborg  
T: +45 89 93 10 00  
F: +45 89 93 10 01  
info@kamstrup.dk  
kamstrup.com