

Welcome to the future of leadership

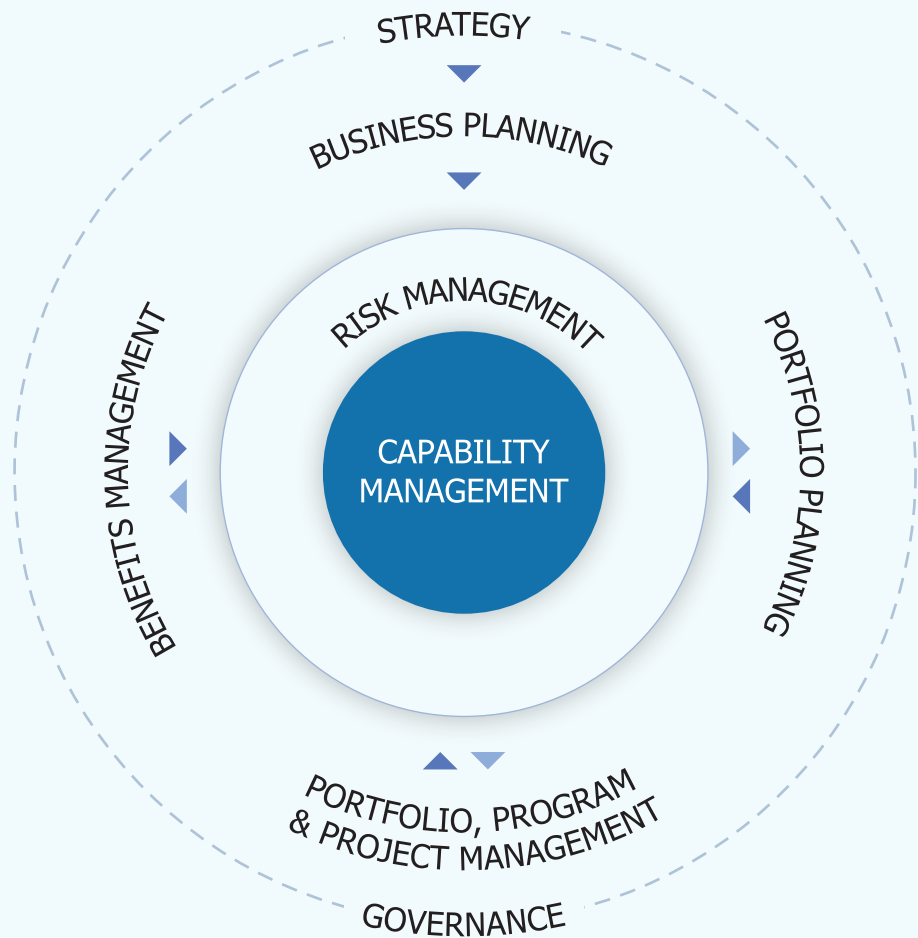


About StrategyDotZero

StrategyDotZero is a next generation enterprise platform that leverages Artificial Intelligence, Experience Design, Big Data Analytics and Augmented Reality to bring strategies to life.

It is built on a Strategy Execution framework that integrates key disciplines of governance and performance management across the organisation to realise the enterprise strategy.

The platform is already in use at some of the most significant Australian Federal and State Government agencies and will continue to evolve into a Future of Work platform to help augment a range of capabilities for the future workforce.



Strategy Execution Framework



Strategy & Business Planning

An integrated business planning and performance approach to enhance decision-making and future-proofing



Capability Management

Enhanced capability maturity and investment alignment to deliver departmental outcomes



Risk Management

Transparent risk management with the ability to analyse and manage interdependent enterprise and portfolio risks



Governance

Manage and track end to end decisions or actions across various governance forums



Portfolio, Program & Project Management

A value-driven approach to project planning and management by ensuring ongoing strategic alignment

Future of Leadership

As the leadership landscape shifts, the leader capability needs to become more sophisticated and targeted to lead the future of work in organisations. Future leaders are **ENTERPRISE LEADERS**, combining individual and network leadership, to navigate this new operating environment in an agile yet responsive manner.

Characteristics of an Enterprise Leader

Manage Complexity

By breaking down functional silos within an organisation, Enterprise Leaders enable visibility of the enterprise landscape.

Promote Organisational Maturity

Through closely monitoring the Organisation's health, Enterprise Leaders mitigate risks and leverage opportunities to align priorities with objectives.

Build Intelligent Organisations

Enterprise leaders establish a self-learning and intuitive organisation that adopts innovative approaches to being contemporary and relevant and keep pace with change.

Harness and Leverage Knowledge

Through rapid augmentation of information across the organisation, Enterprise Leaders draw upon insights to inform real-time decision-making.

Embed Sustainable Practices

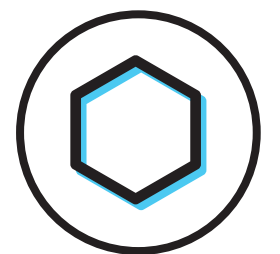
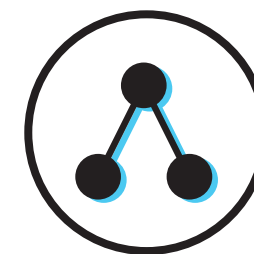
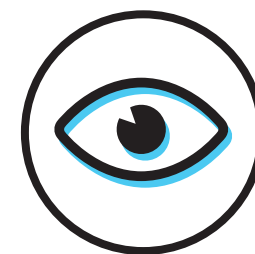
Enterprise Leaders have a heightened awareness and call to action to operate with sustainable practices across the organisation by stabilising, enhancing, sustaining and optimising key functional areas to position the organisation effectively.

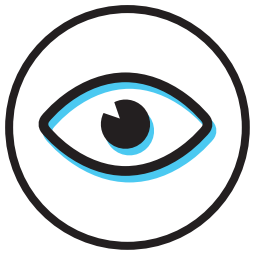
“Only 27% of leaders
have the right skills for the future.”

Source: Gartner

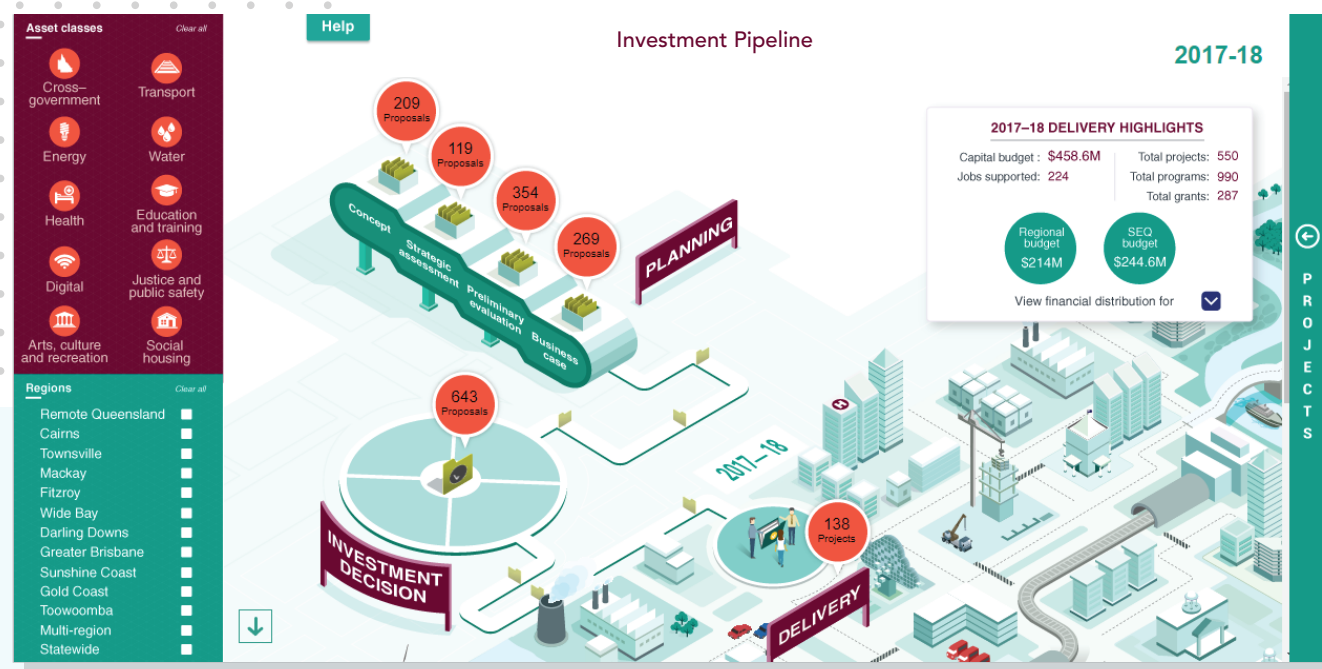
Pathways to the Future

StrategyDotZero builds and facilitates digital connections that empowers leaders to bridge the gap between strategy and execution and transform into Enterprise Leaders

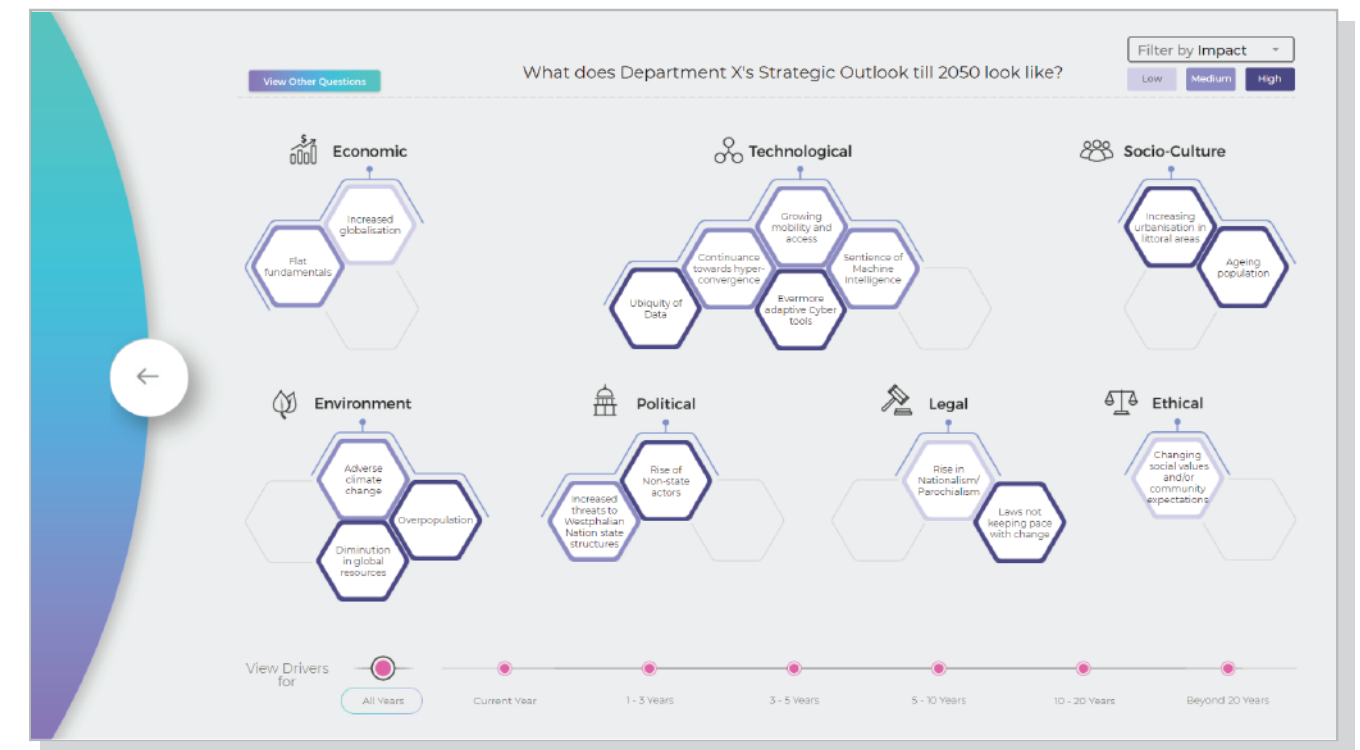




Visualising the organisation's strategic plan and performance measures using storyboards



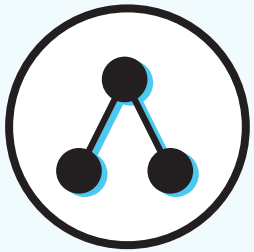
Visual pipeline of major investments across the organisation



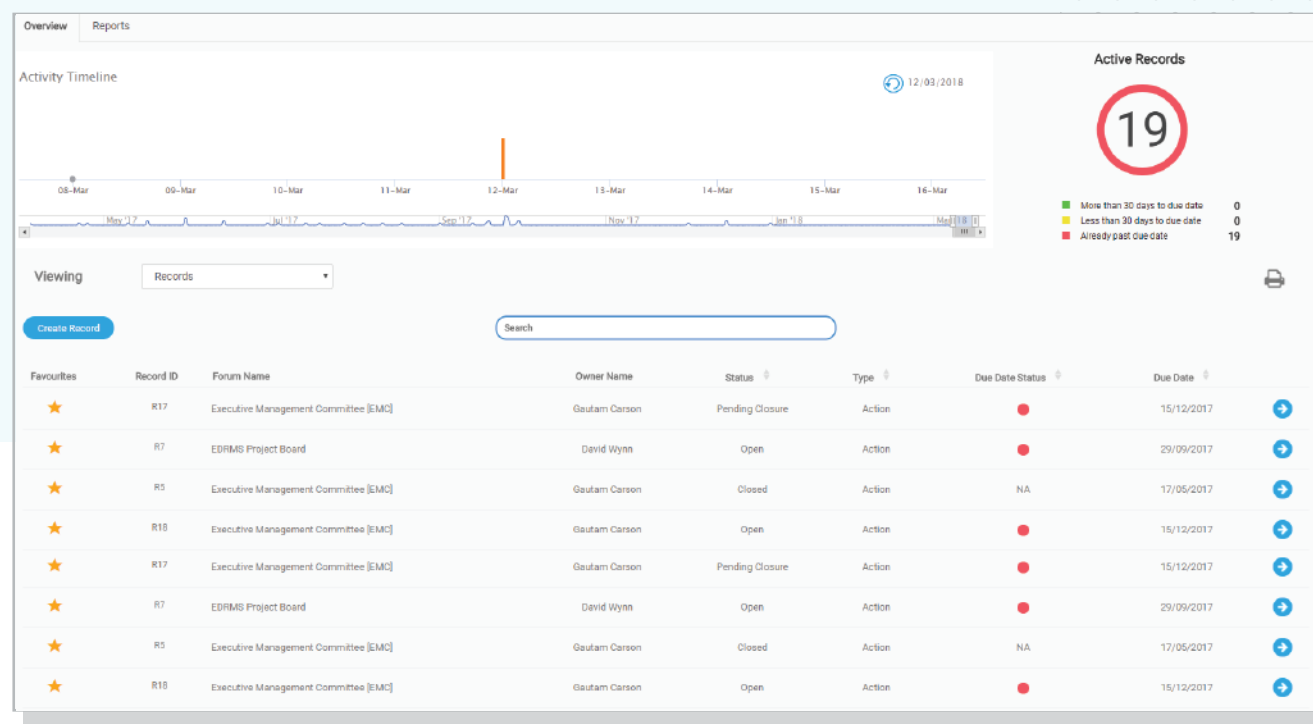
A horizon scan to help organisations understand the impact of external drivers and plan for the future

Visualise

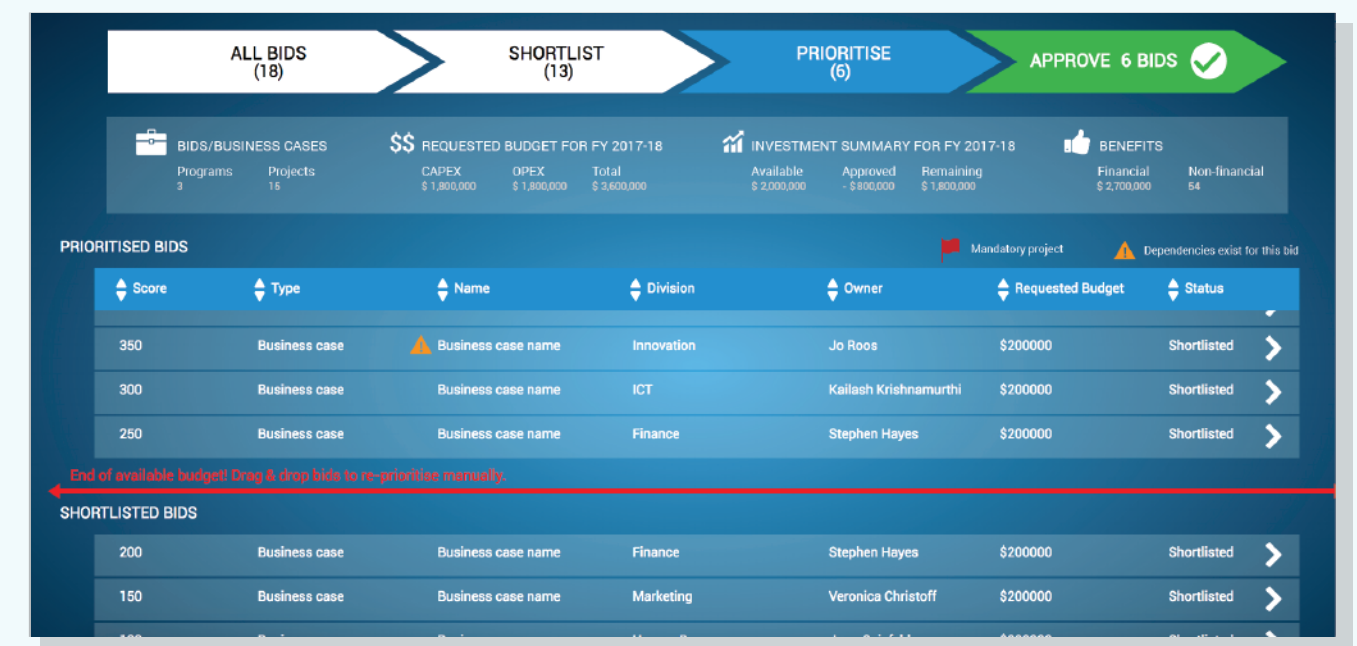
Bring the strategy to life through visual dashboards for executives to understand and probe the organisation in different contexts



● An organisational capability model to understand capability priority, maturity and strategic alignment



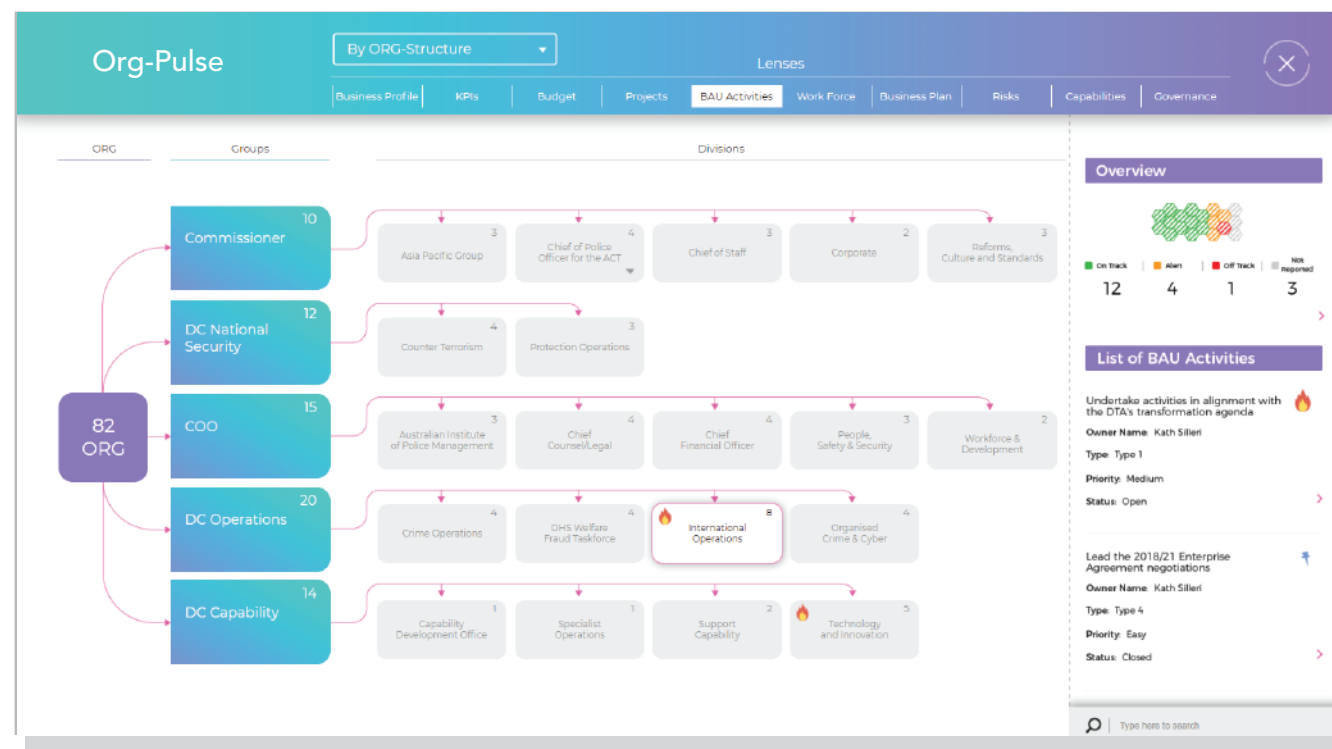
● Tracking decisions and actions that arise out of governance committees



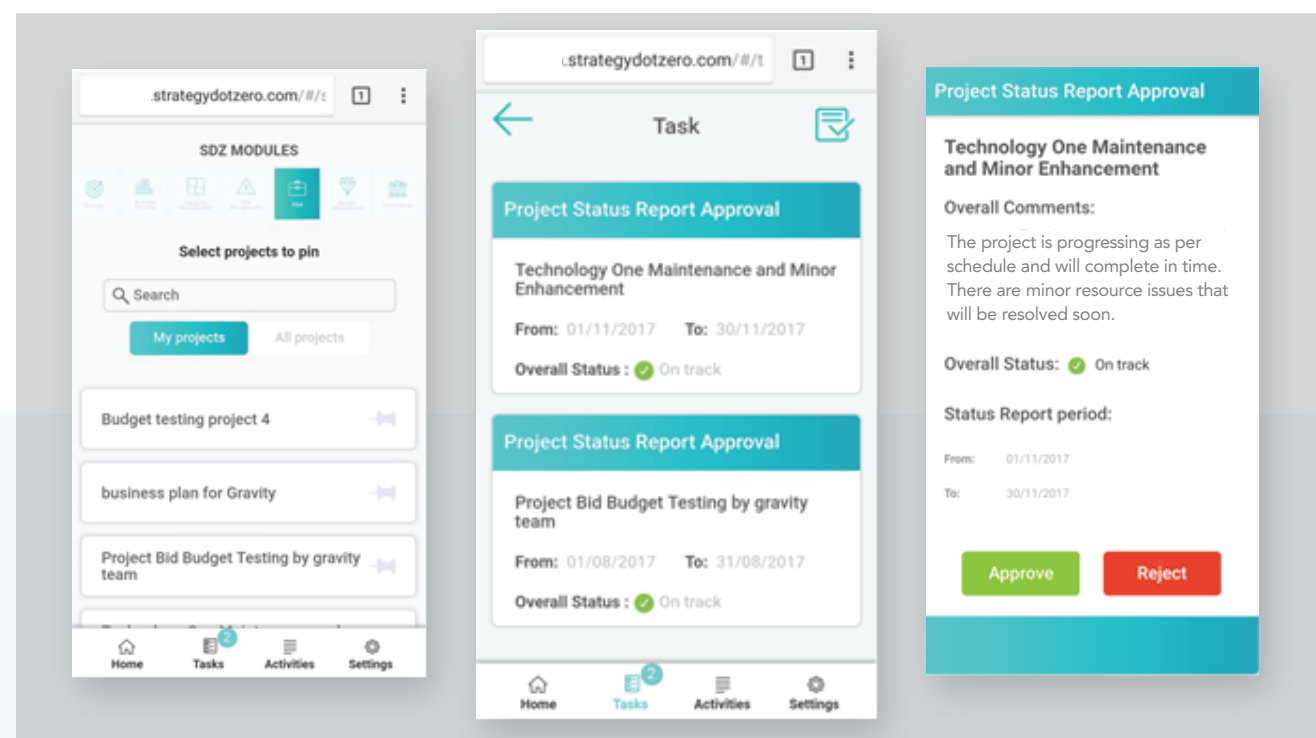
Prioritising key investments using multiple criteria ●

Connect

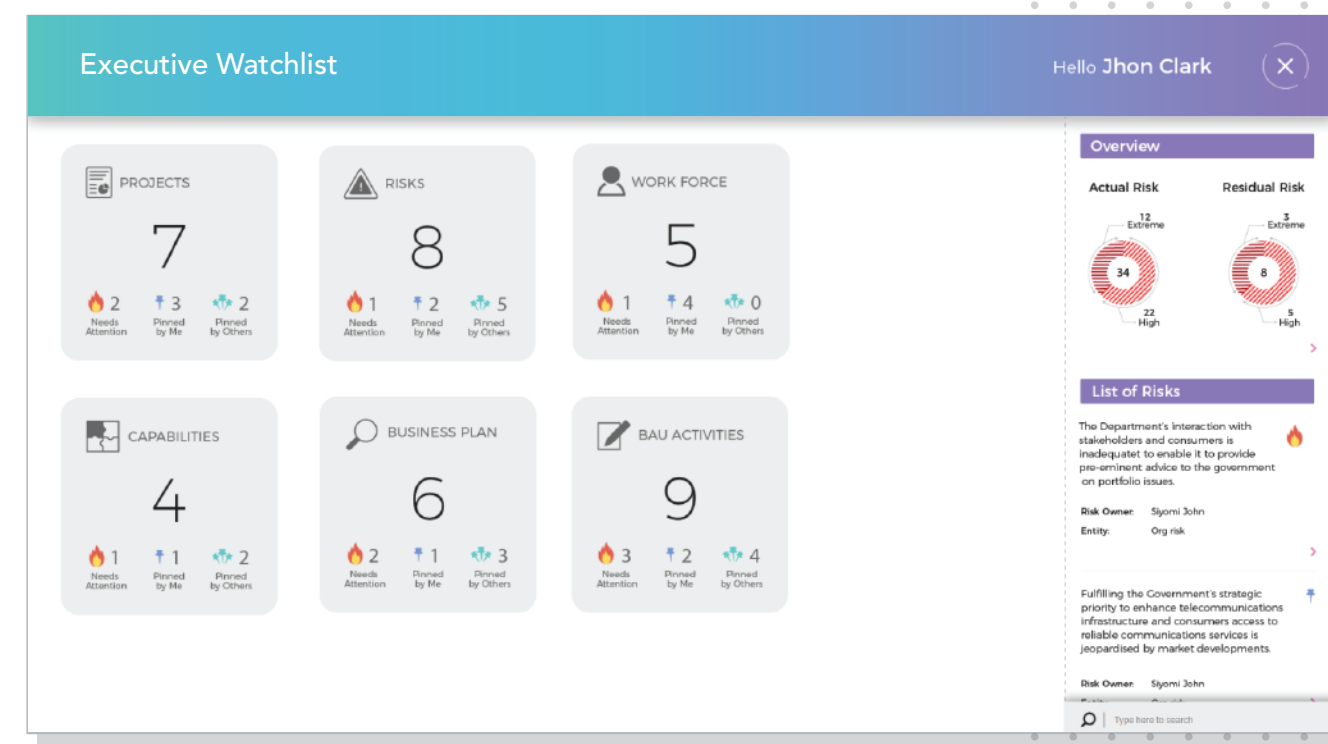
Synthesize information and connect strategic thinking to operations across business functions



Get a pulse of the organisational performance through various lenses



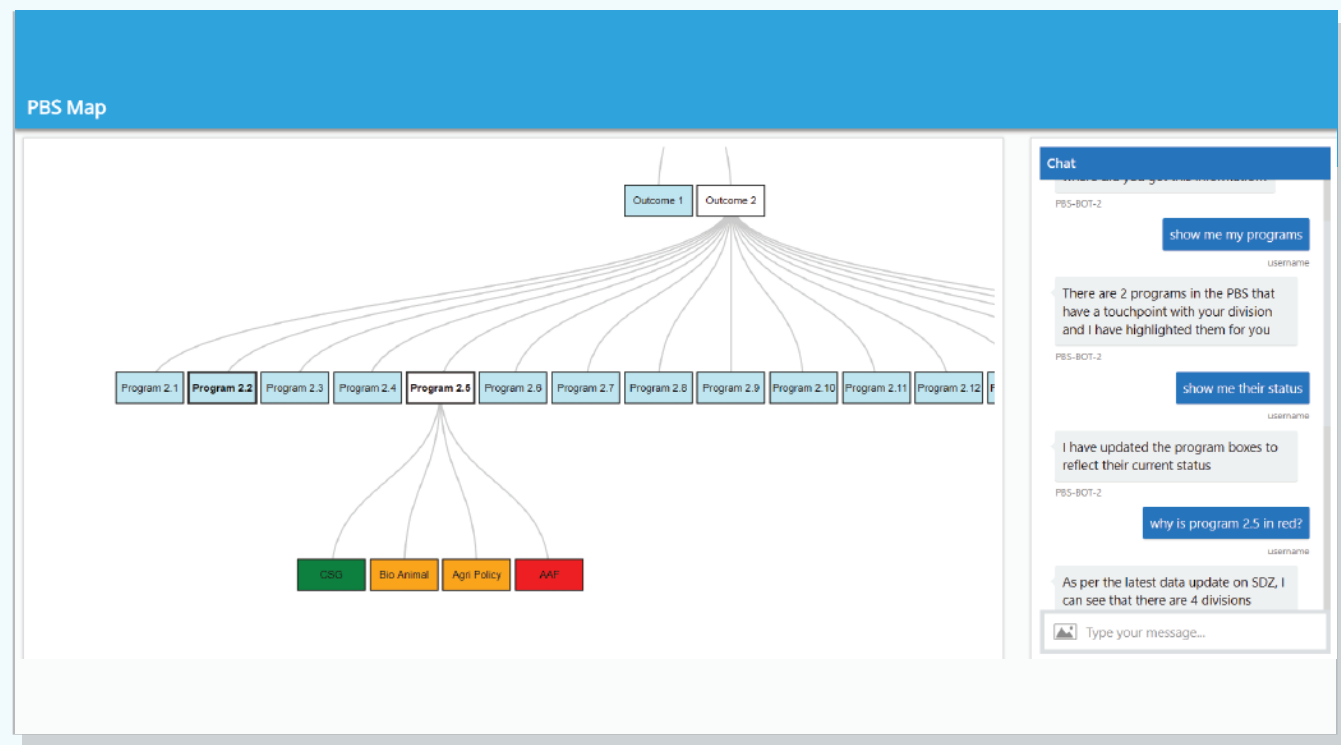
Mobile experience for executives to perform quick tasks



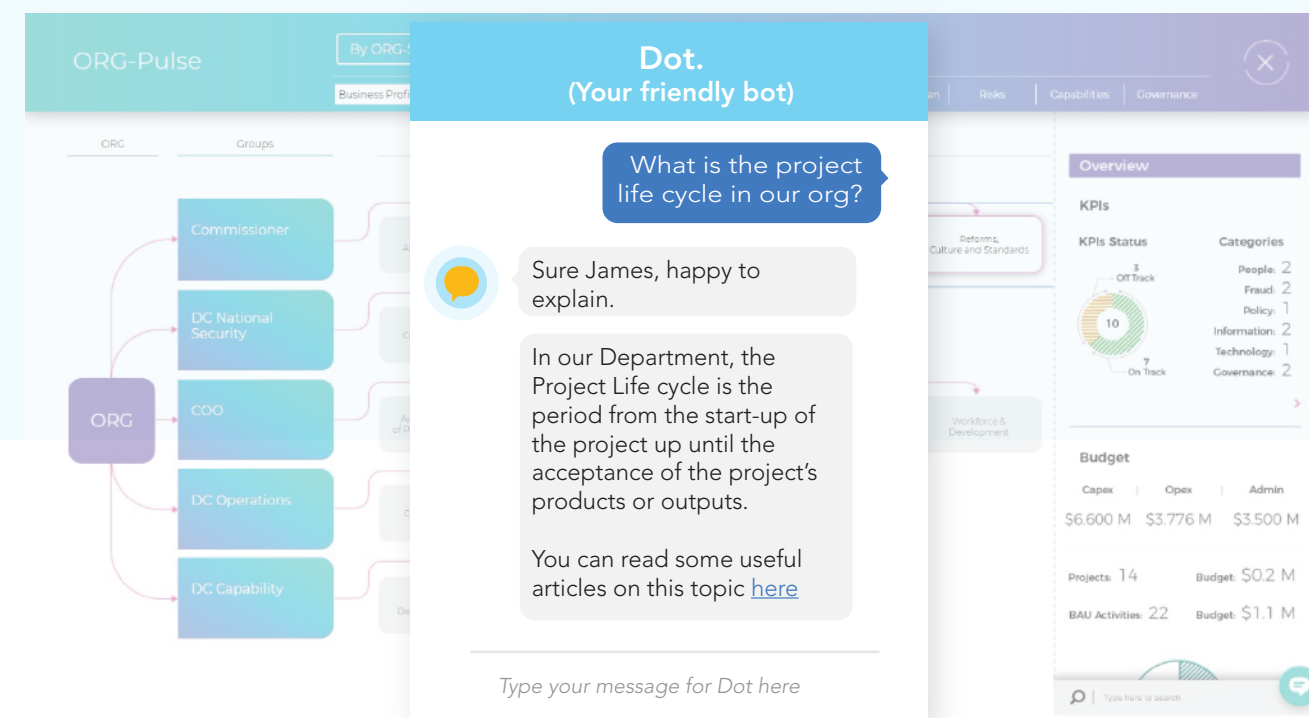
A self-managed, personal watchlist for executives

Monitor

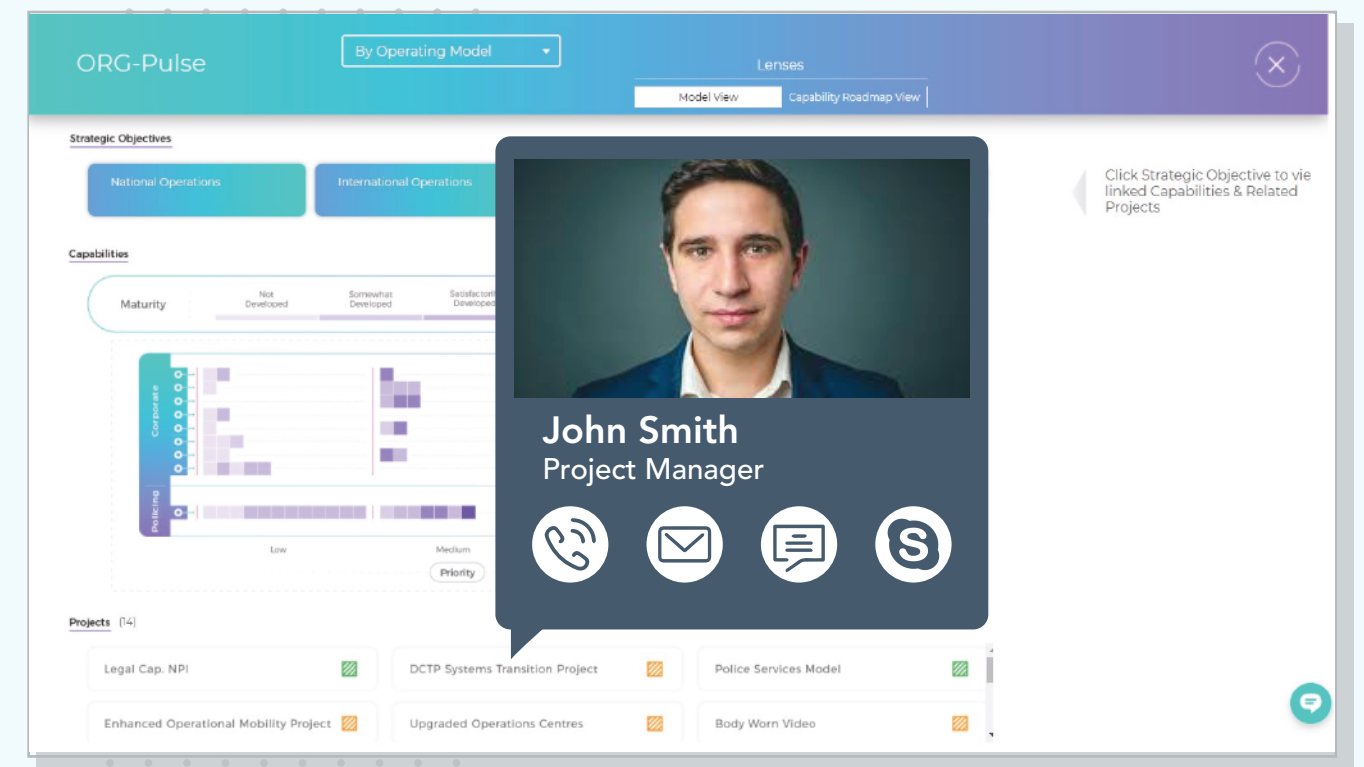
Improve executive oversight through insightful dashboards and reports to drive informed decisions



Automated reading and querying of large, complex policy documents



AI powered chatbots to improve efficiency by enabling self-service for staff



Enabling executives to collaborate in real-time through dashboards

Augment

Establish a foundation for knowledge augmentation and process automation across the strategy execution life cycle

The case for StrategyDotZero

Objectives

Create a connected enterprise by connecting key strategy execution functions

Enable business future-proofing by building a foundation for knowledge augmentation and process automation

Sustain organisational maturity by using best practice methodologies

Build a smart organisation that rapidly creates and discovers knowledge

Stakeholders

Senior Executives
Governance committees
Domain leads
Business owners
Managers

Scope

(Standard features)
Strategy & business planning
Risk management
Portfolio, program & project management
Capability management
Governance
Executive dashboards

(Additional services)
Custom experience design & development
Knowledge augmentation

Benefits

Improved quality

- Improved alignment of programs and projects to strategic priorities
- Increased maturity in project management functions
- Increased standardisation in processes and reporting across the organisation



Reduced risks

- Improved alignment of risks with activities
- Better visibility of dependencies across the value chain
- Improved identification and management of risks



Increased Compliance

- Increased compliance to audit requirements and frameworks
- Improved executive oversight of projects and activities across the organisation



Cost savings

- Ability to meet efficiency dividends
- Improved economies of scale
- Reduced administrative efforts



Time savings

- Improved response to strategic changes
- Reduced duplication of effort across initiatives
- Reduced cycle time for business planning and investment prioritisation

