

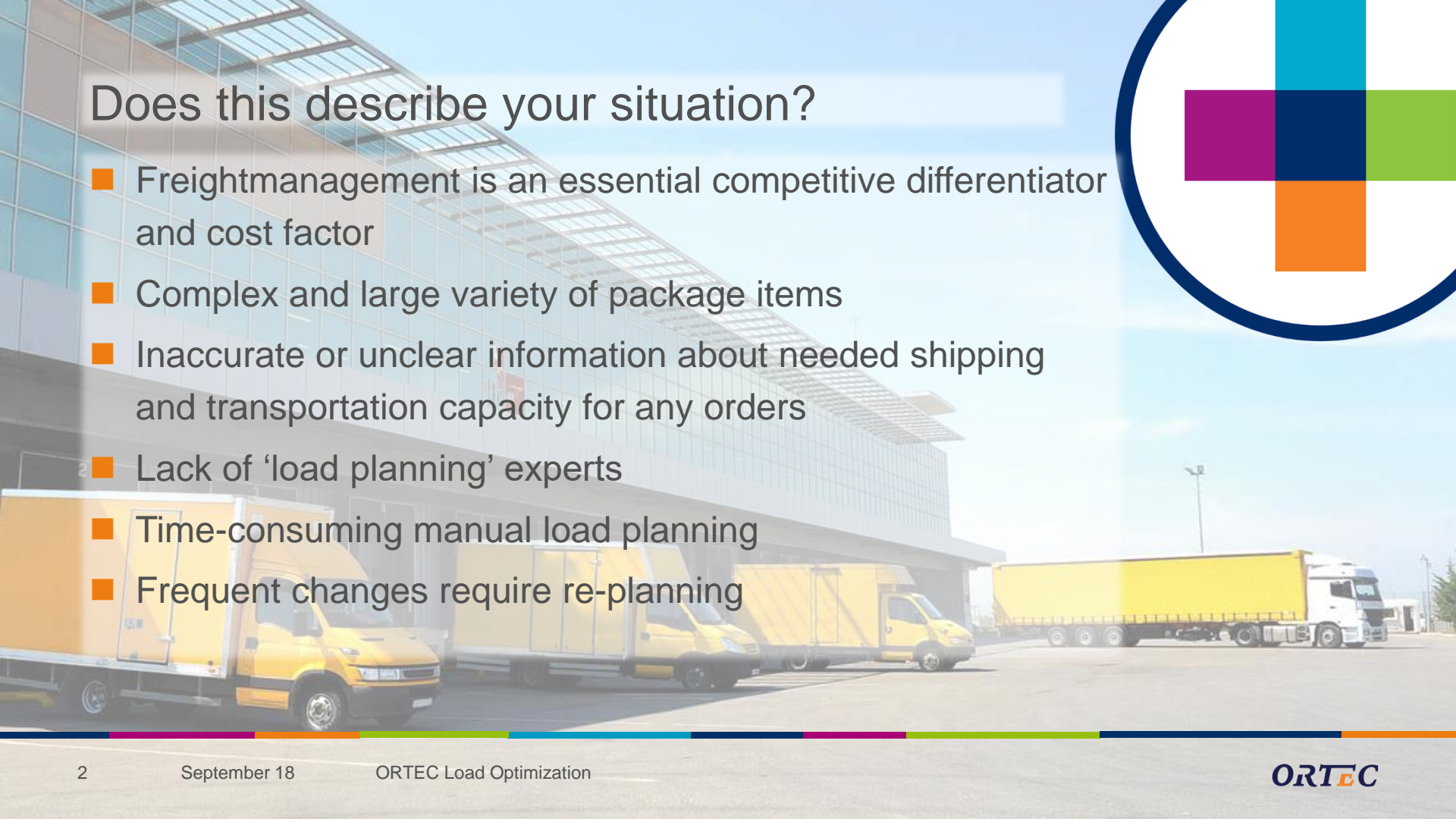


## ORTEC Load Optimization

**ORTEC**  
OPTIMIZE YOUR WORLD

# Does this describe your situation?

- Freightmanagement is an essential competitive differentiator and cost factor
- Complex and large variety of package items
- Inaccurate or unclear information about needed shipping and transportation capacity for any orders
- Lack of 'load planning' experts
- Time-consuming manual load planning
- Frequent changes require re-planning





# Do you notice this?

- Inefficient loaded trucks using inaccurate 'safety' factors in load planning
- Ad-hoc extra costs caused by wrong/incorrect load planning
- More different products/package items
- Damaged package items or complex loading/unloading
- Raising expectations of Customer service level
- Lack of load planning specialists



# ORTEC Load Optimization

- Mathematical **optimization** determines and optimizes the load plan
- Unique **highly configurable** Solver
- 3D Load Diagram **in seconds** for review
- **Re-plan** at any time
- Available in **different variants** for optimal support of different business processes
- ‚Plug & Work‘ -> **Software-as-a-Service**
- **Unlimited** optimizations, users, plans
- **Collaborate** with Supply Chain Partners
- **Value-Driven Pricing**



# ORTEC Load Optimization

## Software demonstration (Example 'Sales')

- How to access the product
- How to manage Package information
- How to manage Means of Transport information
- How to run an Optimization
- How to view a Solution
- How to share the Solution

[SIGN IN](#)

# ORTEC Load Optimization Technology

 Microsoft Azure





# ORTEC Load Optimization

## Benefits

① Productivity



② Quality



③ Standardization



# ORTEC Load Optimization

## Software-as-a-Service

- Transparent, business-oriented pricing metrics
- Alternative pricing models: Flat rate or Pay-per-Use
- Unlimited Users, Packages, Means of Transport, Optimizations\*
- Technical Support
- Lower TCO compared to On-Premise



# ORTEC Load Optimization

## Why ORTEC?

- **Best-in-class** optimization **algorithms** with ORTEC's more than 35 years of experience in packing and loading optimization
- Achieve a **higher productivity** in planning and realize **freight cost reductions** by better utilization from the first use of the software
- **No investments** in software licenses or additional IT infrastructure required, low operational costs – Flexible subscriptions either 'flat rate' or in the 'pay-per-use' plan as Software-as-a-Service managed by ORTEC
- All web applications are designed to **optimize User experience and productivity** and can run at any PC **without additional installations** in the most commonly used internet browsers.

# ORTEC Load Optimization

## What's next?

- **Explore** provided information
- **Evaluate** opportunities in your company
- **Ask** questions, we are happy to help
- Let us help you, to create your individual **Business Case**
- Discuss the option of a **Value Assessment** study with us
- Try the system with a **Free-Trial access**
- **Benefit** from using ORTEC Load Optimization



**Stefan Althoff**

Senior Product Manager

Tel. +49 162 2938 356  
stefan.althoff@ortec.com

**ORTEC GmbH**  
Im Breitspiel 11  
69126 Heidelberg  
Germany  
+ 49 421 960 390  
[www.ortec.com](http://www.ortec.com)



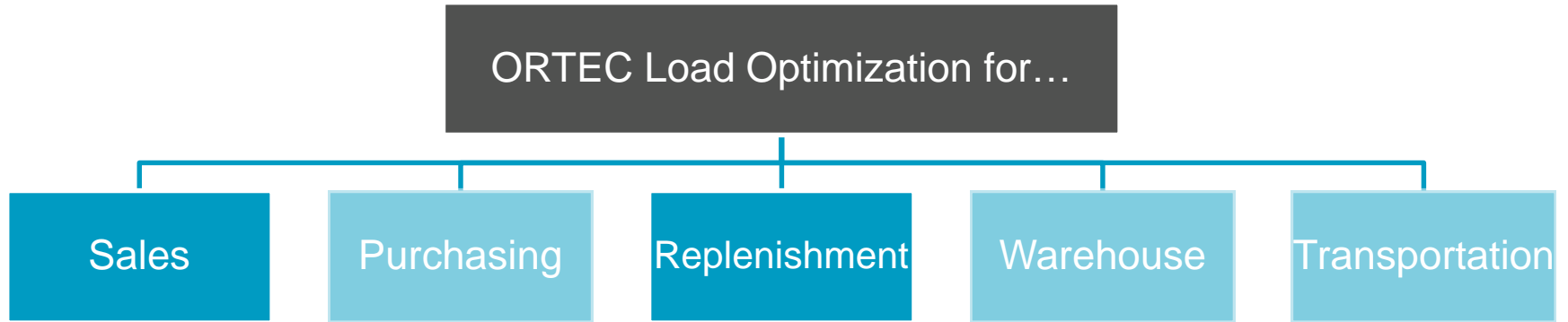


ORTEC Load Optimization

[Additional information](#)

**ORTEC**  
OPTIMIZE YOUR WORLD

# Product family ORTEC Load Optimization



# ORTEC Load Optimization for Sales

## Highlights

- Easy and fast conversion of any quotation or order quantities into ,logistics units‘ in the hand of any Customer Service Representative (CSR)
- Optimized packing and loading for maximum resource utilization (cartons, boxes, pallets, container, trucks,...)
- Support CSR in simulating ,order sizing‘ to create ,efficient‘ loads (fill up/split) at time of order entry
- Simple sharing of solutions with warehouse, carrier, customer via hyperlink
- Standardized system integration for your business software



# ORTEC Load Optimization for Sales

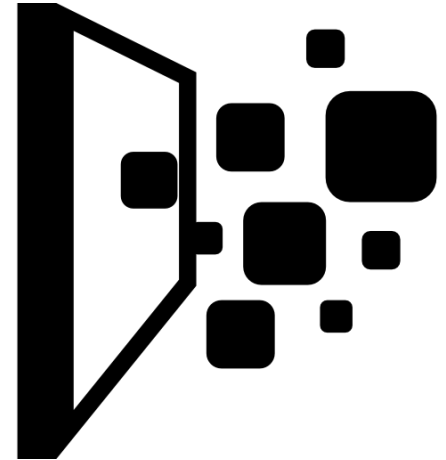
## Release 1.0: Supported usage scenarios

- Optimized loading of packages into means of transport
- Designed for use in combination with ERP/SCM system
- Optimization of single or multiple sales documents
- Flexible data management for planning specific data for Packages, Means of Transport
- Standard API for seamless data integration and optimization

# Web Applications

## ,Data Management'

- Maintain the relevant information for Packages and Means of Transport for Loading
  - Dimensions, Rules & Instructions, Capacities, Means of Transport Combinations, etc.
- Data can optionally be provided with every single optimization request fully or partially from a Third-party software, the system will automatically extend missing data in the request from the Data Management



# Web Applications

## ,Data Management'

LOAD BUILDING DATA MANAGEMENT

PackagesMeans of transportConfiguration

TRUCKSTRAILERSTRACTORSEMI TRAILERSCOMBINATIONSCONTAINERS

Sort by Name A-Z

Search for means of transport...

ADD NEW MEANS OF TRANSPORT

CANCEL Add package

1 Select category2 Specify package information3 Set the loading rules

Box

A cubic container with defined dimensions and weight. The content does not need necessarily to be known in detail, the box should be packed or loaded.

Case

A cubic container with defined dimensions and weight. The content does not need necessarily to be known in detail, the case should be packed or loaded.

Pallet

A pallet is a cubic package with 'open' sides and top, using any load carrier of the category 'pallet'. It is usually meant to be loaded.

Crate

A crate is a hard-shell cubic package which contains one packing unit of one product in a predefined roster in the crate (Stability). Example: Beverage industry, a crate with 1l bottles with the same mineral water.

2.2002.6502.6502.650

CANCEL Add means of transport

1 Select category2 Select type3 Set dimensions4 Maintain capacity

Truck

A Truck is designed to carry an entire load. It may consist of a chassis and body, a chassis, cab and body or be of integrated construction so that the body and chassis form a single unit.

Trailer

A Trailer is designed without motive power to be driven by another vehicle.

Tractor

A Tractor is designed for pulling semi-trailers. A truck cab and chassis without a body and equipped with a fifth wheel.

Semi-trailer

A Semi Trailer is designed without a front axle and can be coupled with a fifth wheel with its kingpin.

Combination

A Combination connects two or multiple

Container

An ISO shipping Container, also referred

17

September 18

ORTEC Load Optimization

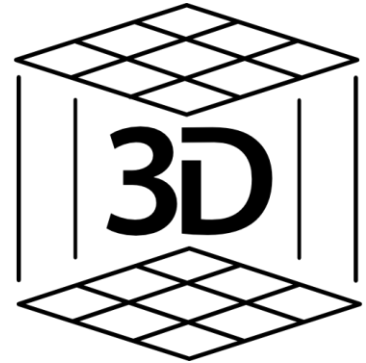
ORTEC



# Web Applications

## ,Solution Viewer‘

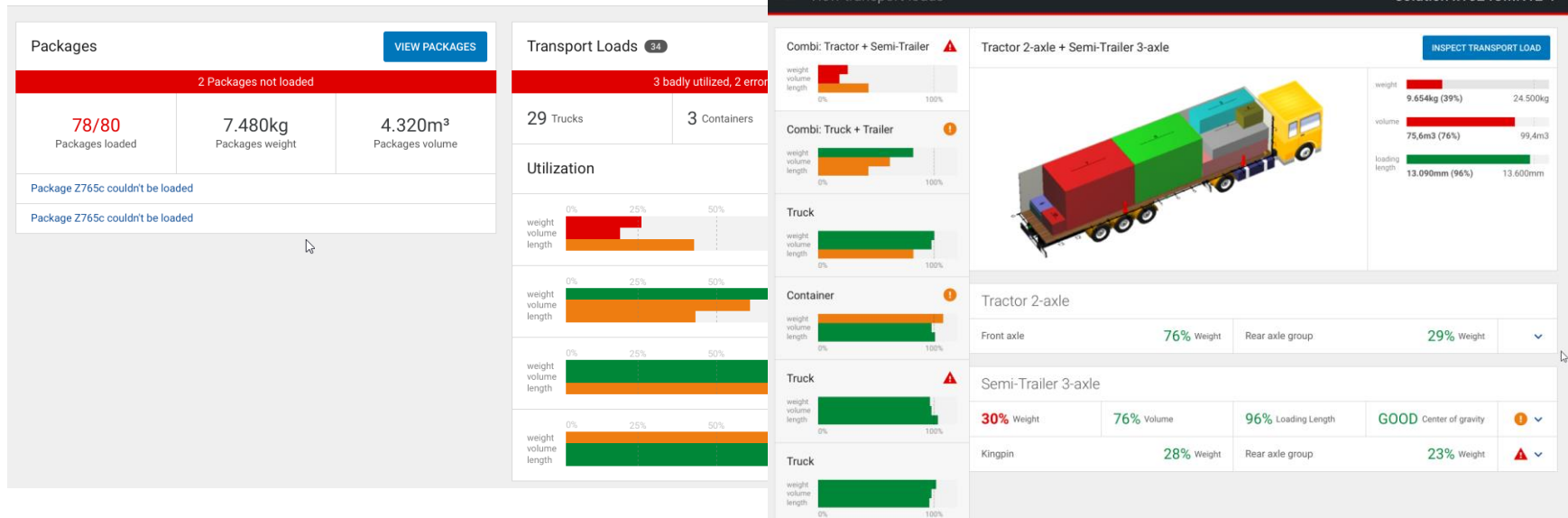
- Understand the Solution of a Plan
- Get an overview of the loading status of all Package Items and the Transport Load quality
- View individual Transport Loads with their KPI and the arrangement of the Packages in the Means of Transport
- Inspect Transport Loads in Detail with an interactive 3D Graphic



# Web Applications

## ,Solution Viewer'

LOAD BUILDING SOLUTION VIEWER



# System integration

## Application Programming Interface (API)

- RESTful (Representational state transfer)
  - Stateless, Asynchronous
  - HTTPS
- 
- Integration Guide
    - API Documentation
    - Step-by-Step Integration Scenarios with Code Snippets

# Cloud Platform: Microsoft Azure

## Security, Compliance and Privacy

- ORTEC Load Optimization is provided with Microsoft Azure
- Most comprehensive set of compliance offerings (incl. certifications and attestations) of any cloud service provider
- For more information, please visit
  - <https://www.microsoft.com/en-us/trustcenter>
  - <https://www.microsoft.com/en-us/trustcenter/cloudservices/azure>



## Selection of customers of Load planning and optimization



*Coca-Cola Enterprises*



**FERRERO**



**KALDEWEI**



**L'ORÉAL**



**ATAG**  
*we love to cook*

