

blueforceCOMMAND CENTER

Single pane of glass view for
superior decision support



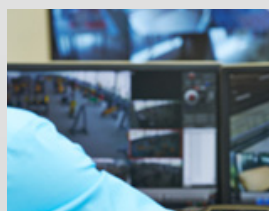
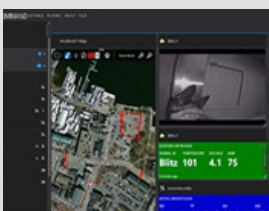
A rapidly adaptable single pane of glass view of your people, sensors, and information services

A map has been the commander's steadfast planning and tactical tool on nearly every battlefield or emergency management response throughout history. The traditional paper map has evolved to embrace digital networking technology and allow decision makers (regardless of their physical location) to consume information about people, sensors, and resources in real time and collaborate with other leaders on a common relevant operating picture (CROP).

Blueforce Command Center is our patented (U.S. Patent No.s 8,467,779/8,682,309/9,066,211) "Single Pane of Glass View" common relevant operational picture software application for Windows and/or HTML5 client computing platforms. The product enables the rapid formation of tactical teams and facilitates rich information sharing amongst team members using smartphones, tablets, and laptop computing devices. The product combines information from deployed personnel, autonomous agents and information services, and body-attached or unattended ground sensors to provide a broad spectrum of information for commanders and staff members and enables faster and superior synchronized planning and decision support.

Solution Areas

- Situational Awareness
- Command and Control
- Corporate and Perimeter Security
- Disaster Response
- Emergency Management
- M2M and IoT Sensor Networks





Real-Time View

People, sensors, resources, and information services provided on real-time maps and dashboards. Critical information is no more than a click away.

Alerts and Notifications

Customize the way in which you are notified of mission critical events using visual, audible, and workflow-based notifications.

Your View, Your Way

Supports multiple cognitive models for the consumption of information: map views for the geospatially inclined or enduser constructed dashboards.

Secure

Command Center makes use of a FIPS 140-2 cryptographic provider thereby delivering military-grade encryption and authentication.

Historical Perspective

Command Center stores all communications ensuring full chain of custody and historical "playback" of incidents for after-action and/or training purposes.

Interoperable and Scalable

Built on United States Government mandated interoperable presence and messaging standards; protocol scales to millions of endpoints.