

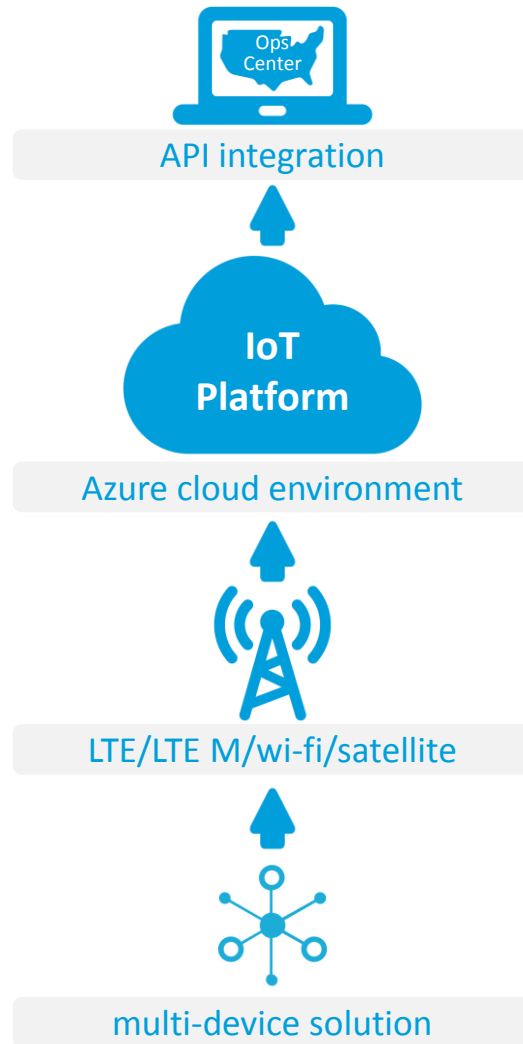


Seamlessly track, monitor and manage your connected assets with  
a centralized, customizable solution

AT&T Asset Management – Operations Center

July 2017

# AT&T Asset Management – Operations Center with Microsoft Azure



## AT&T Asset Management Operations Center

is a **customizable, client-ready solution** that enables organizations to track, **monitor, and manage assets** from a **centralized UI**.



# The Operations Center provides a single user interface to manage multiple solutions

## Asset Tracking

know where your assets are in real-time and improve customer service with accurate delivery

## Asset Condition Monitoring

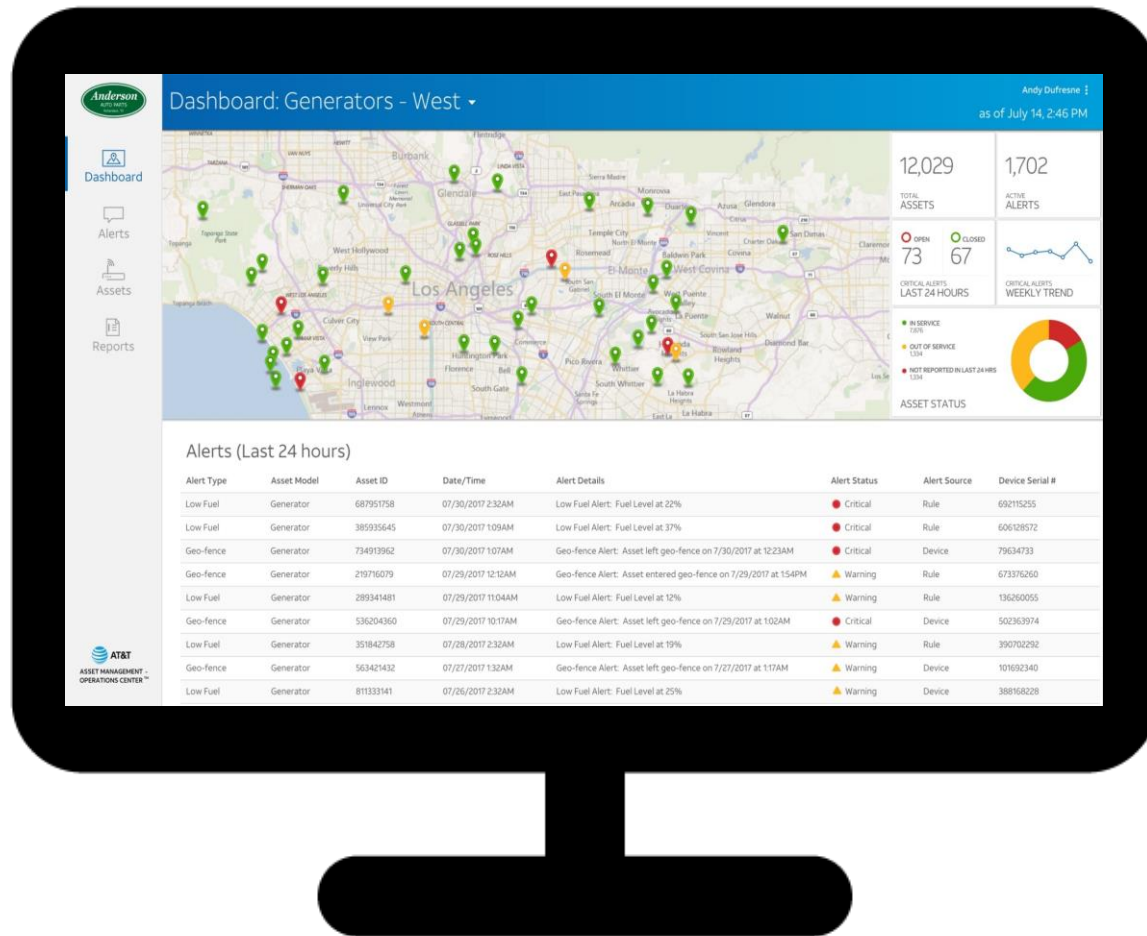
improve quality control and prevent damage/spoilage of your assets

## Asset Activity Management

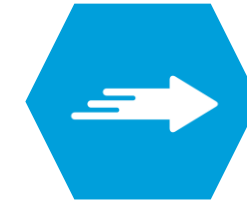
receive alerts for important events to ensure peak productivity and efficiency



# Key Features of Operations Center



compatibility with multiple LTE and LTE M devices



speed to market, quick deployment and implementation



multiple solutions enablement on a single platform



maximized scalability with multi-cloud environment and global capability



easy integration into variety of applications with APIs



real-time data powered insights



end-to-end security for sensor data and device management



monitor and manage assets from a centralized dashboard



# IoT Solutions

Shake Machines  
Storm Drains  
EV Charging Stations  
Gas Pumps  
Watches  
Water Meters  
Dog Collars  
Light Posts  
Dirt  
Shipping Containers  
Glucometers  
Garbage Cans  
Air Quality Sensors  
Juke Boxes  
Billboards  
Traffic Lights  
Solar Panels  
Gunshot Sensors  
Earthquake sensors  
GPS  
Well Heads  
Cardiac Monitors  
Sprinklers  
Electric Meters  
ATMs  
Industrial Ovens  
Tractors  
Alarms  
Light Posts  
Fire Trucks  
Wheelchairs  
Generators  
mPers

# Asset Management Operations Center Value Proposition

## Visibility



- Improved business process visibility
- New sources of information
  - Up-to-date location
  - Asset condition
- Critical Situation Alerts

## Flexibility



- Easily configurable to fit your business needs
- Ability to support multiple IoT devices and assets

## Global Capability



- Seamless roaming in 200+ countries and territories\*
- Easily manage connectivity with AT&T Control Center
- Global support capability

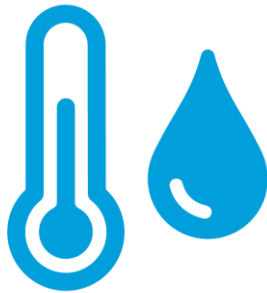
\*An LTE network must be commercially available to AT&T customers roaming in the visited country. As new carriers become available, AT&T will provide that information at [att.com/globalcountries](http://att.com/globalcountries).

# A new way to do IoT— manage your connected assets with more flexibility and more options

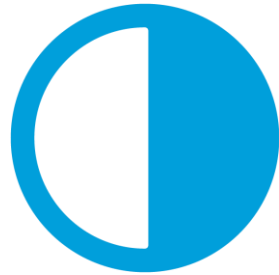
Choose from a selection of devices with a variety of sensors that meet your specific needs.



GPS +  
Geo-fencing



Temperature +  
Humidity



Light Intensity



Atmospheric  
Pressure



Magnetometer

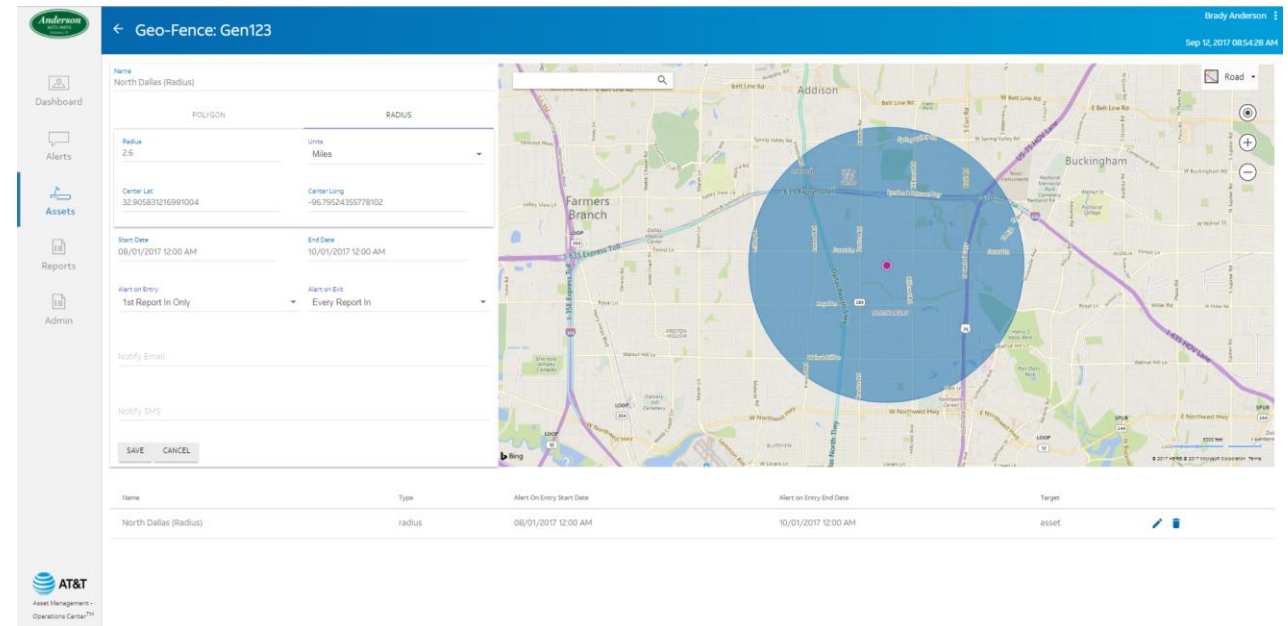


Inertial  
Movement  
Measurement

# Asset Tracking with GPS + Geo-fencing

Know where your assets are in real-time and improve customer service with accurate delivery.

- Easily locate assets in the field
- Asset arrival and departure notifications
- Helps avoid theft and speedy recovery of stolen assets





# Condition Monitoring with Temperature, Humidity, Light and Pressure/Shock

Preserve the integrity of your assets by closely monitoring and maintaining an optimal environment

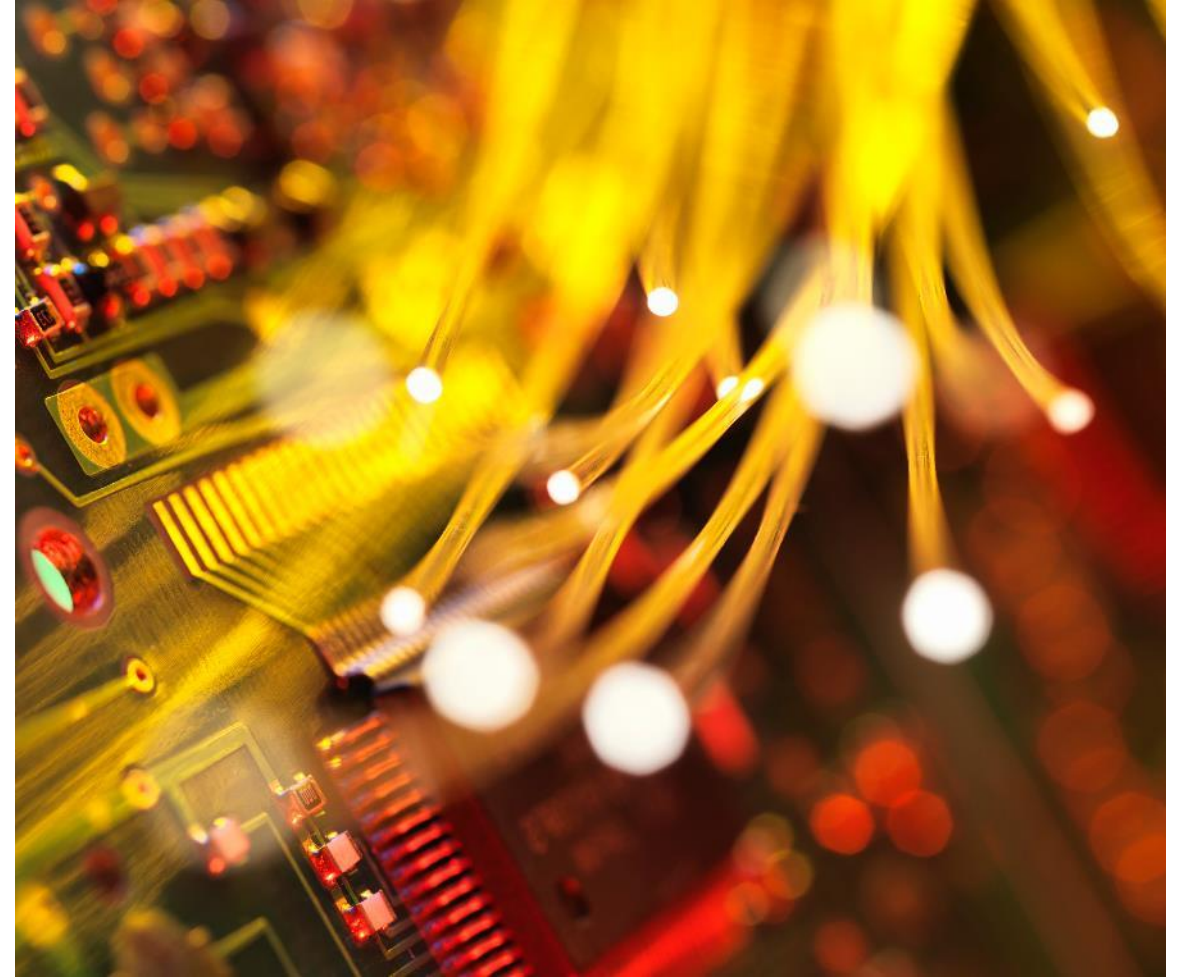
- Maintain quality and improve regulatory compliance of refrigerated goods
- Prevent excessive movement and shock to ensure sensitive goods are delivered intact
- Capture data for analytics



# Condition Monitoring with Light Intensity

Prevent tampering of goods and exposure to potentially harmful light rays for sensitive cargo.

- Help avoid theft with light exposure alerts
- Help prevent damage from light exposure to high value assets such as fiber optic cabling, artwork, etc.



# Activity Management with Critical Alerts

Ensure day-to-day operations are running smoothly and maintain peak proficiency and productivity of remote assets.

- Get alerted when assets in the field are active or inactive
- Real-time telemetry to maintain optimal conditions such as temperature, fuel levels, etc.
- Receive notifications when assets are entering or leaving a designated area





# Manufacturing (Supply Chain)

Eliminate the lack of visibility to your assets and better track RoA while improving the customer experience and gaining deeper insights into your operations and supply chains.

- Improve supply chain visibility for your shipments
- Monitor incoming parts/components arrivals
- Capture valuable data on the conditions of product during transport
- Verify on-time delivery





# Retail

Improve retail operations, reduce theft, ensure product quality, optimize supply chain operations, and, most importantly, enhance the consumer's shopping experience with an asset management IoT solution.

- Monitor the condition of critical equipment such as refrigeration units
- Increase supply chain visibility for inbound and outbound shipments
- Maintain the quality of perishable goods



# Government

The benefits of a connected government include reduced operating costs, increased responsiveness, improved sustainability, higher efficiency, and greater citizen satisfaction.

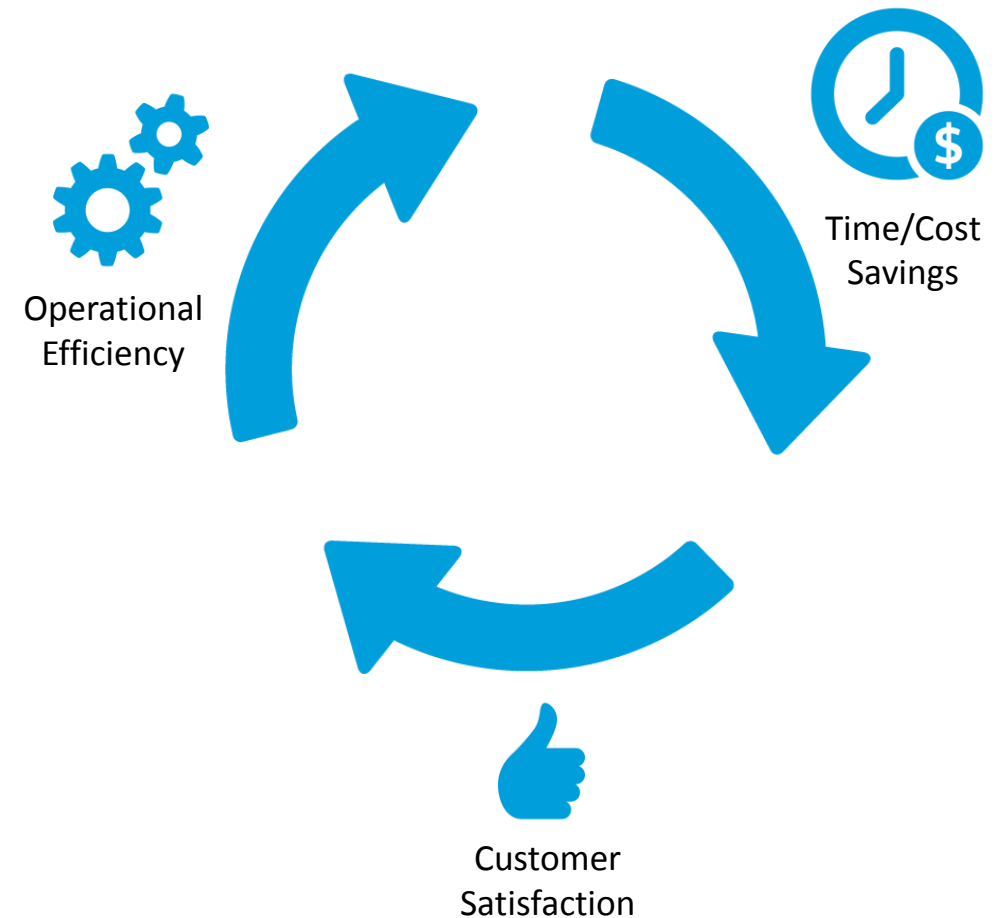
- Monitor the condition of government assets including generators, high value civilian and defense equipment, etc.
- Keep government operations running smoothly by fixing things before they break
- Reduce theft and losses through geo-fencing and movement alerts
- Enhance sustainability practices with real time data



# Revisiting Asset Management Operations Center Value Proposition

Take your business to new heights with time and cost savings, operational efficiency and improved customer satisfaction. With the AT&T Asset Management – Operations Center, you can:

- Easily identify when an asset is on the move with GPS to ensure timely deliveries and help prevent theft.
- Monitor temperature sensitive assets such as food or pharmaceutical goods to maintain cold chain integrity.
- Ensure ideal humidity levels for food and equipment cargo.
- Help prevent tampering of goods and exposure to potentially harmful light rays for sensitive cargo.
- Keep goods such as fragile items and shock-sensitive equipment from being mishandled.



# Get started today with one of these devices

## XIRGO 4970



### Sensors

- GPS
- Accelerometer + Motion Detector
- Internal Temperature

### Battery

- 10.6 Ah backup battery

## CALAMP TTU720



### Sensors

- GPS
- Accelerometer + Motion Detector

### Battery

- 57Ah lithium field replaceable battery pack

## WNC-CCR



### Sensors

- GPS and Wi-fi
- Analog/digital sensors to monitor temperature, door clos/open, etc.

### Battery

- 3.7V, 2200mAh Lithium Ion battery

## XIRGO 4760



### Sensors

- Integrated GPS receiver and antenna for tracking applications

### Battery

- Internal 6600 mA rechargeable battery

## CALAMP TTU2830



### Sensors

- GPS
- Accelerometer for driver behavior and impact detection
- Driver ID, temperature, etc.

### Battery

- 5.2 Ah lithium ion rechargeable battery pack

## SONIM XPi



### Sensors

- Temperature + Humidity
- Ambient Light Intensity
- Pressure + Magnetometer
- Accelerometer
- Low-power GNSS

### Battery

- 1400mAh Li-Po Battery, rechargeable w/ USB





**AT&T** Business