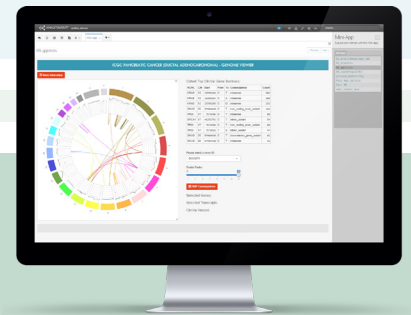


THE WORLD'S LEADING DIGITAL RESEARCH ENVIRONMENT. BUILT FOR BIOMEDICAL RESEARCH, PRECISION MEDICINE AND HEALTHCARE COMMUNITIES



AnalytiXagility is a Software as a Service platform and services ecosystem designed to offer diverse communities in distributed research, healthcare and precision medicine environments a way of accessing the powerful analytic capabilities required to make sense of disparate sources of privileged data in order to translate clinical research into mainstream clinical practice.



Industrial-scale, multi-tenanted, SaaS platform accelerating collaboration and analytics



Unique in its ability to enable multi-organisational, multi-jurisdiction collaborations to cost-effectively analyse diverse cross-boundary datasets whilst adhering to the strictest information governance requirements



AnalytiXagility facilitates secure, auditable and reproducible research, allowing data sharing with role-based access control for collaborators and research groups. Core to this functionality are AnalytiXagility's collaborative analytic workspaces which provide the environment in which to perform the analysis of multiple data types.

DIGITAL RESEARCH WORKSPACES FOR EVERYONE
Whether you're part of a local collaborative project, or in charge of improving research data management, sharing and access at a major academic centre, AnalytiXagility can help you revolutionise your research lifecycle. We have designed our packages and pricing to offer the best flexibility to scale up or down as required.

Our subscription-based commercial model is unique in the field of clinical research



“The Aridhia research and innovation platform will transform the way in which we manage our research projects, providing a rich source of data that will underpin pioneering research of national and international significance.”

Neil Sebire, Chief Research Information Officer and Professor of Paediatric and Developmental Pathology, Great Ormond Street Hospital NHS Foundation Trust

ANALYTIXAGILITY BY ARIDHIA:

- Connect your data, tools and team in a whole new way.
- Accelerate collaboration. Explore data. Expand knowledge.
- Your data, team, tools and expertise, all under one roof.

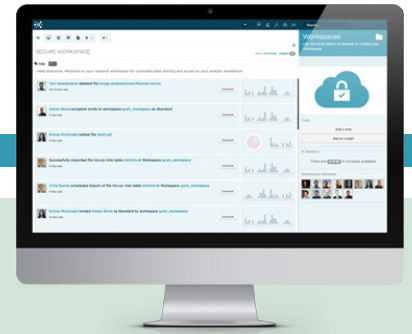


POWERFUL FEATURES TO GET YOUR RESEARCH MOVING
AnalytiXagility's secure, feature-rich research workspaces give you the freedom to innovate.

I WANT TO COLLABORATE...

Transform your data and expertise into intelligence, together

- Secure, web-based, anytime, anywhere collaborative analysis across boundaries
- Solves data sharing and collaboration problems that can facilitate research in AI
- Comprehensive user profiles which enhance team collaboration and interaction



...IN AN AUDITED AND SECURE INFORMATION GOVERNANCE ENVIRONMENT...



Ensure compliance with built-in access, audit and security features

- Two-factor authentication to protect privileged data against unwarranted access
- Role-based permissions model with multiple levels of access-controlled user roles
- Self-service user management and downloadable audit log for approved administrators
- Extensive activity reporting, tracking all access to files and data including workspace exports
- Managed data export using audited, approvals-based download request facility

...THAT FACILITATES DATA INGEST AND TRANSFORMATION...

Streamline the research lifecycle from data upload to analysis

- Simple point and click data import tool or SFTP for secure bulk import of sensitive data
- Custom file transfer mechanisms (e.g. from genomics labs) where required
- Comprehensive meta information and external reference recording at the point of data upload
- Integrated eCRF to aid compliance with Good Clinical Practice data collection guidelines
- Data de-identification service to enable the safe sharing and analysis of clinical data
- Ontology service to improve interoperability and data sharing
- Dataset library service to maintain a single source of truth for clinical dataset definitions



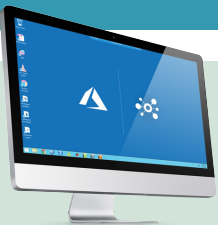
...OFFERS THE BROADEST ANALYTICS WORKBENCH

Accelerate experimentation for everyone from novices to experts with a highly flexible and extensible toolkit

- Point and click data table editor and analytics modules driven by R code
- Point and click database joins using SQL
- Interactive R console with scripting and package management
- Prototyping 'mini-apps' using R Shiny to support visualisation and commercialisation
- SQL programming interface with analytical extensions (OLAP, windowing)
- Straightforward, automated LaTeX publishing with built-in journal templates
- Easy access to Windows or Linux virtual desktops from the web interface
- Integrated PDF viewer



...SUPPORTS MY REPRODUCIBILITY CHALLENGES...



Effortlessly capture project data and code to address the challenges of peer review and validation

- Versioning of files to ensure the appropriate level of change control and asset management
- File locking to safeguard files and help manage their lifecycle
- Snapshot capability to create points-in-time in research activities
- Archiving for reproducibility purposes, or as a funding requirement

...AND GIVES ACCESS TO WORLD-CLASS COMPUTE AND DATA FABRIC TECHNOLOGIES...

Fast-track data innovation with the latest infrastructure supported by a rigorous, SLA-backed service

- Open, flexible, enterprise-grade cloud computing with scalable storage and compute to support projects of all sizes
- Analytics at scale with Pivotal's massively parallel processing Greenplum database.
- Support exponential growth without leaving security, scalability or analytics behind