





INFO IoT —

Connectivity +
Management +
Real time analytics

ALERT 

Detected venting hose failure
Nearest employee: Jeff H.

ASSIGN



Supervisory control and data acquisition system on Azure infrastructure



Challenges

- Device Connectivity
- Device Management
- Multiple platforms
- Native support for AMQP/MQTT or HTTP protocols

Azure IoT Hub is a fully managed service that enables reliable and secure bidirectional communications between millions of IoT devices and a solution backend. D2C, C2D, file transfer & request/reply methods, durable messages, device management: twin/methods/query/jobs, declarative message routing.



Ideal Solution

- Designed for IoT to multi-scale
- Cloud-scale messaging
- Operations Monitoring
- Multi-protocol, Multi-platform

- ✓ Connect, monitor and manage millions of devices
- ✓ D2C, C2D, File transfer & Request/Reply methods
- ✓ Monitor device connectivity and device identity management events



Desired Outcomes

- Secure End-to-end
- Fast - Start in minutes
- Open - Connect anything
- Scalable - Grow effortlessly
- Real time analytics

Hot path analytics - data is actually analyzed in real time. The incoming data is analyzed based on a set of rules and the data can then be transformed and insights generated. Cold path analytics - data is moved into storage and different analytic services dependent on your needs can be used to generate insights.



InfoPLC Gateway communicate with PLC (Programmable Logic Controller) devices through MODBUS protocol and enable communication (send/receive data) between PLC devices and Azure IoT Hub through AMQP, MQTT or HTTP.

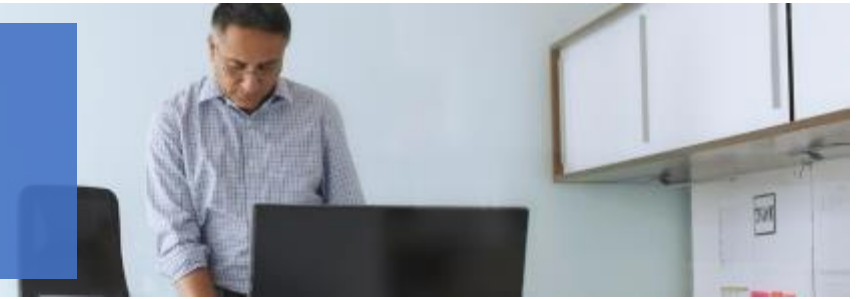


Microsoft
Azure

Certified

Informatika's „InfoPLC gateway“ is the first gateway device certified for Azure IoT platform in Serbia, and at the time, one of the 80 IoT certified gateways worldwide.

Informatika's team of experts + Microsoft Azure IoT

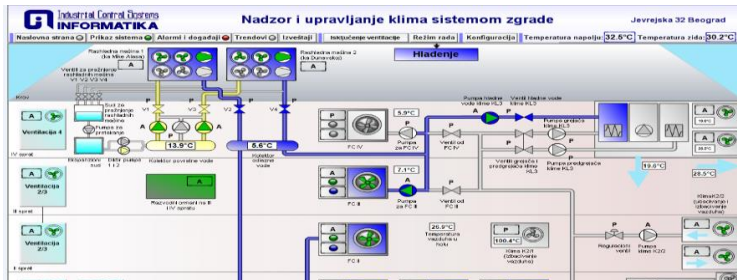


Azure IoT Hub is a fully managed service that enables reliable and secure bidirectional communications between IoT devices and a solution backend.

Informatika's solutions on Azure platform

Info SCADA

Info SCADA is Informatika's Supervisory control and data acquisition system implemented on Azure Infrastructure. Info SCADA easily ingest any data from IoT devices into the Microsoft Azure cloud infrastructure through the Azure IoT Hub.



InfoPLC Gateway

InfoPLC Gateway communicate with PLC (Programmable Logic Controller) devices through MODBUS protocol and enable communication (send/receive data) between PLC devices and SCADA systems and Azure IoT Hub through AMQP, MQTT or HTTP.



Real time analytics

Set thresholds, alert limits and values and alarm jobs while processing big data. Visualize big data on dashboards or create reports for business decision makers. Implement predictive analytics and algorithms across historical and real time data for a variety of purposes.

