



# Overdrive Basic Fleet Management System

For instant visibility and control to your fleet operations

## What is Overdrive?

Overdrive is a true IoT (Internet of Things) platform that manages the information flow from a multitude of sensors, ranging from complex machines such as an automobile to a simple mobile device. From our cloud platform, we gather information from various sensors and analyze the data to build smarter applications.

Gain visibility and control of your fleet operations with ease using Overdrive Basic Fleet Management System. Import the data into your operations and see instant results.



## Why customers use Overdrive platform

- Holistic approach
- Seamless integration with enterprise solutions
- Reliable
- Strategic deployment
- Real-time information and access
- End-to-end solutioning
- Scalable & Flexible
- Excellent technical support

### Benefits to your business

- Fully SaaS model
- Zero Capex
- Volume based discounts
- Quick & easy deployment

### Smarter Integration

- Unlimited number of sensors
- Supports multiple device protocols
- Custom development
- API access
- Mobile friendly

### Smarter Insights

- Smarter analytics
- Contextual data
- Greater transparency
- Pro-active approach
- 24/7 visibility

*"Overdrive has helped from the conceptualizing stage to the practical implementation to manage my mobile assets and integrate into my current operations. Their responsiveness takes the weight off and allows me to focus on my core business."*

- Andy Tan, Operations Manager, Bookabus.sg



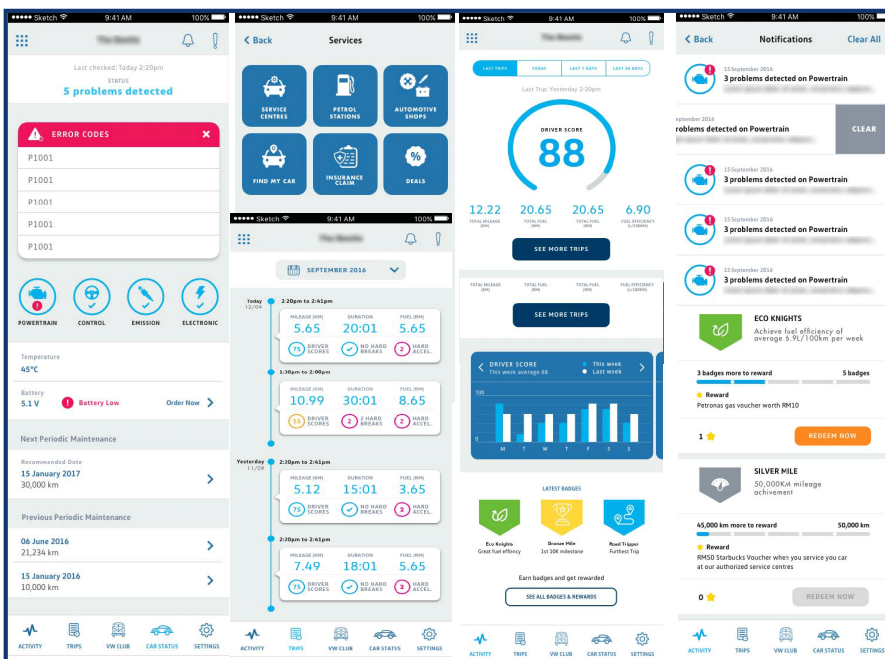
### What is Overdrive?

Overdrive is a true IoT (Internet of Things) platform that manages the information flow from a multitude of sensors, ranging from complex machines such as an automobile to a simple mobile device. From our cloud platform, we gather information from various sensors and analyze the data to build smarter applications.

Designed for Car Distributors, Car Leasing & Rental, Car Sharing Services, Auto 4S Service Providers, Automotive Aftersales Market. Enhance customer loyalty by providing valuable data driven services.

### Why customers use Overdrive platform

- Holistic approach
- Seamless integration with enterprise solutions
- Reliability, Scalability, Flexibility
- Real-time information and access
- Excellent technical support



### Expand your business and achieve more

- Predictive Maintenance
- Driver Scoring
- Brand Loyalty
- Customer Rewards Program
- Partnership Ecosystem
- Leasing and Financing
- Usage Based Insurance



### Benefits to your business

- Fully SaaS model
- Volume based discounts
- Quick & easy deployment
- Partnership ecosystem

### Smarter Integration

- Car sharing services
- Supports multiple device protocols
- Custom development
- API access
- Mobile friendly

### Increase Customer Satisfaction

- Smarter analytics
- Contextual data
- Greater transparency
- Pro-active approach
- 24/7 visibility

*"Overdrive was the only one that managed to demonstrate their technical capabilities convincingly which met our requirements. Their prompt response and high service quality gives the confidence to roll out at a larger scale after the trials."*

- Samuel Goh Jock Koon, Manager / Resource & Logistics Branch, Foreign Manpower Management Division, Ministry of Manpower