

worXsmart.io

Workflow Enforcement for Retail & Facility Maintenance



Business Case:

Using connected devices to provide insight into mission critical workflows. Increase efficiency, productivity, and accountability of workers and managers.

Device

worXsmart.io is a device-agnostic workflow enforcement software platform. The platform currently supports occupancy sensors, temperature sensors, Bluetooth beacons, and UWB indoor tracking technology, with more being on-boarded each quarter.

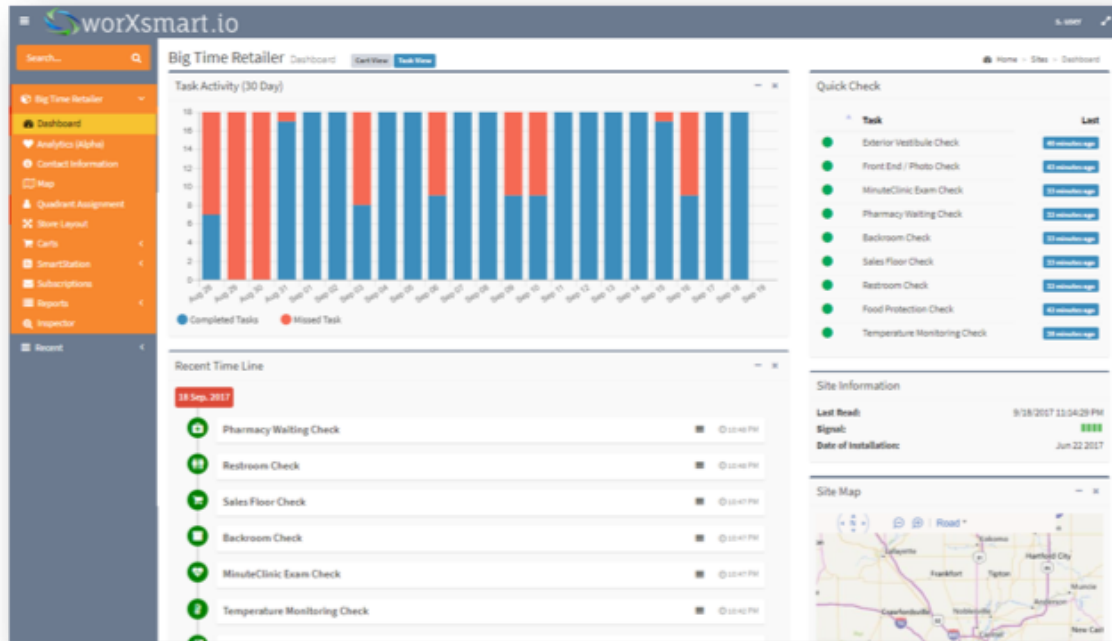
Cloud Solution

State machines and smart contracts powered by customizable schedules of prescribed workflows and processes. Blockchain component is forthcoming.

worXsmart.io represents the intersection of IoT **data**, important **workflows**, and the **people** who get things done.

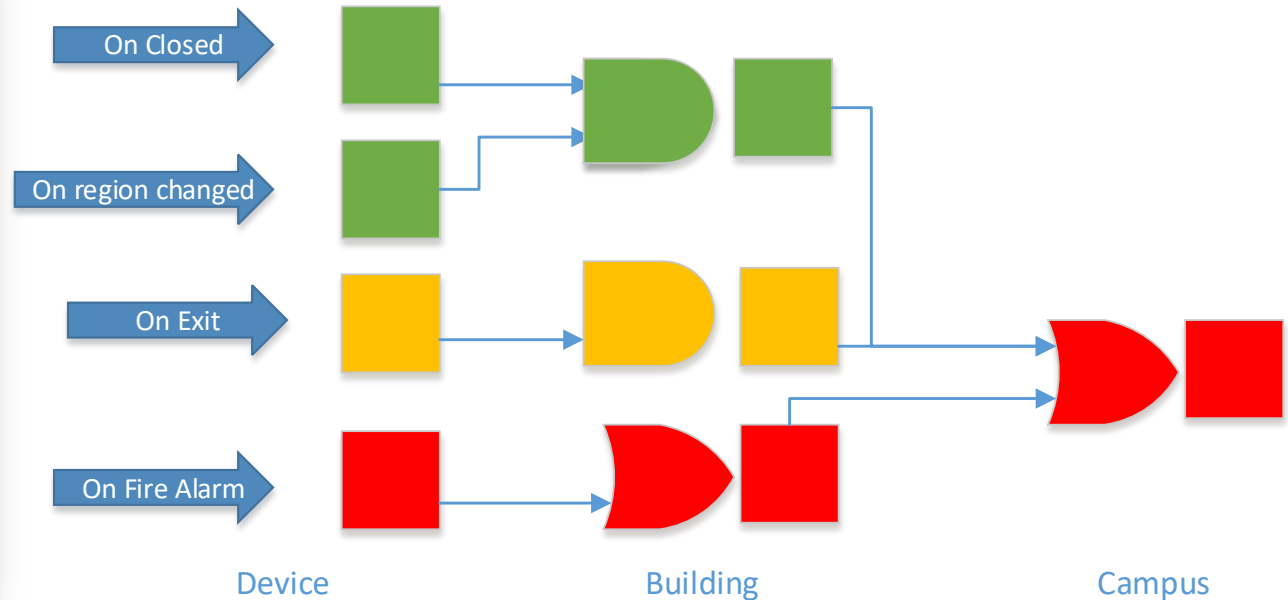


worXsmart.io – Web Portal and Architecture



Manage prescribed workflows in aggregate across all of your locations from the cloud-based web portal.

Track in real-time the completion of tasks. Create new tasks and assign them to the proper employee.



Any number of tasks can be assigned to a site. Task hierarchies can color a site as 'All Green,' 'In alert,' or 'In alarm.'

MESH SYSTEMS

mesh-systems.com

Contact

John Rouse, VP Business Development
Mesh Systems
12400 N Meridian St, Suite 175
Carmel, IN 46032
john.rouse@mesh-systems.com
(317) 661-4807

