



ATOM AGENT SETUP

UPDATED ON JANUARY 15, 2019



+420 778 411 744



atom@atom.ms



www.atom.ms

KPCS Consulting LLC

209 Surrey st.

Henderson, NV 89074

United States

KPCS CZ, s.r.o.

Kubánské nám. 1391/11

100 00 Praha 10

Czech Republic



TABLE OF CONTENT

1	INTRODUCTION.....	3
2	ATOM AGENT REQUIREMENTS	4
2.1	WINDOWS AGENT	4
2.2	LINUX / UNIX AGENT.....	4
3	AGENT INSTALLATION	6
3.1	WINDOWS AGENT.....	6
3.1.1	WINDOWS AGENT UNATTENDED INSTALLATION.....	14
3.1.2	WINDOWS AGENT INSTALLATION OUTCOMES	15
3.2	LINUX / UNIX AGENT.....	16
3.2.1	LINUX/UNIX AGENT INSTALLATION OUTCOMES	16



1 INTRODUCTION

In ATOM, an agent is a service that is installed on a computer that looks for configuration data and proactively collects information for analysis and reporting. It allows ATOM to monitor Windows, Linux, and UNIX operating systems and the components of an IT service installed on them, like a web site or an Active Directory domain controller.

ATOM Agent on Windows operating systems may be installed by using one of the following two methods:

- Manual Interactive Installation.
- Manual/Automated unattended Installation. ATOM Agent on Linux/UNIX operating systems must be installed manually.

2 ATOM AGENT REQUIREMENTS

2.1 WINDOWS AGENT

- Hardware Requirements:
 - Memory: 2 GB minimum
 - CPU: 1 cores minimum
 - Disk: 5GB of disk space for the ATOM agent and related components
- Any of the following operating systems:
 - Windows Server 2008 R2 SP1 Standard/Enterprise/Datacenter (Full UI/Core).
 - Windows Server 2012 Standard/Datacenter (Full UI/Core).
 - Windows Server 2012 R2 Standard/Datacenter (Full UI/Core).
 - Windows Server 2016 Standard/Datacenter (Desktop Experience/Core).
- Any of the following operating system languages:
 - English
 - Czech
- ATOM Agent is NOT supported explicitly on the following operating systems:
 - Windows Server 2016 1709
 - Windows Server 2016 1803
 - Windows Server 2019
 - Any Windows Client operating system
- Screen Resolution Minimum: 1280x1024
- For the Exchange Server Monitoring, ATOM Agent is supported only on Windows Server 2012 R2 operating system or newer and running Exchange Server 2013 or newer.
- Windows PowerShell 4 or 5 Installed and Enabled. PowerShell Execution Policy set to RemoteSigned.
- .NET Framework 4.5.2 (primarily to support the PowerShell 4.0 on Windows Server 2008 R2 SP1 operating system). [Download here](#)
- Windows Management Framework 4.0 (primarily to support the PowerShell 4.0 on Windows Server 2008 R2 SP1 and Windows Server 2012 operating systems). [Download here](#)
- Both ICMPv4-In and ICMPv4-Out allowed locally.
- Any inbound network communication from the public internet is not needed.

2.2 LINUX / UNIX AGENT



- Hardware Requirements:
 - Memory: 1 GB minimum
 - CPU: 1 cores minimum
 - Disk: 2GB of disk space for the Microsoft Monitoring Agent and Microsoft Dependency Agent
- Any of the following operating systems:
 - CentOS 6 and 7
 - Amazon Linux 2017.09
 - Oracle Linux 6 and 7
 - Red Hat Enterprise Linux Server 6 and 7
 - Debian GNU/Linux 8 and 9
 - Ubuntu 14.04 LTS, 16.04 LTS, and 18.04 LTS
 - SUSE Linux Enterprise Server 12
- Any of the following operating system languages:

- English
- Both ICMPv4-In and ICMPv4-Out allowed locally.
- Allowed communication explicitly for the following hosts:
 - Githubusercontent.com
- Any inbound network communication from the public internet is not needed.

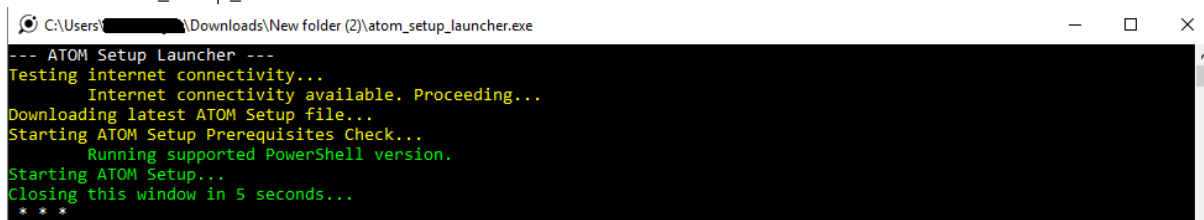
3 AGENT INSTALLATION

3.1 WINDOWS AGENT

1. Download the ATOM Agent Setup launcher from http://www.atom.ms/_download/atom_setup_launcher.exe

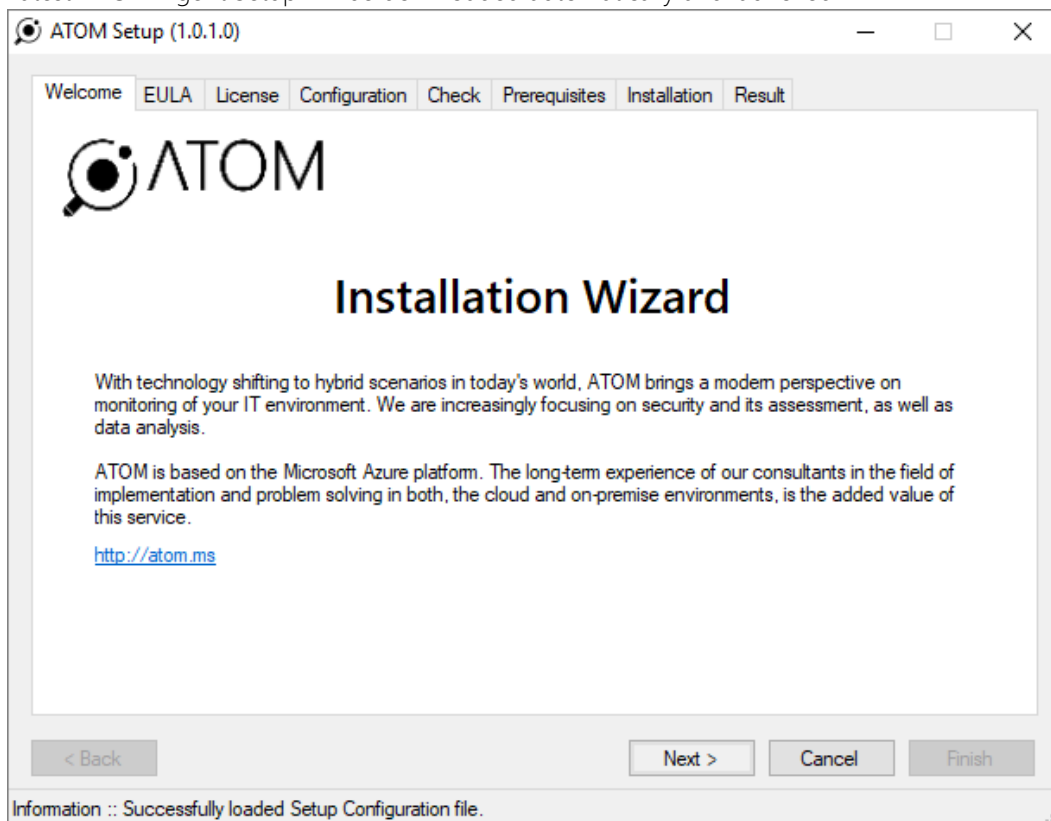
<input type="checkbox"/> Name	Date modified	Type	Size
 configuration.bin	15.08.2017 15:41	BIN File	2 KB
 atom_setup_launcher.exe	15.08.2017 15:43	Application	193 KB

2. Run the atom_setup_launcher.exe as an Administrator

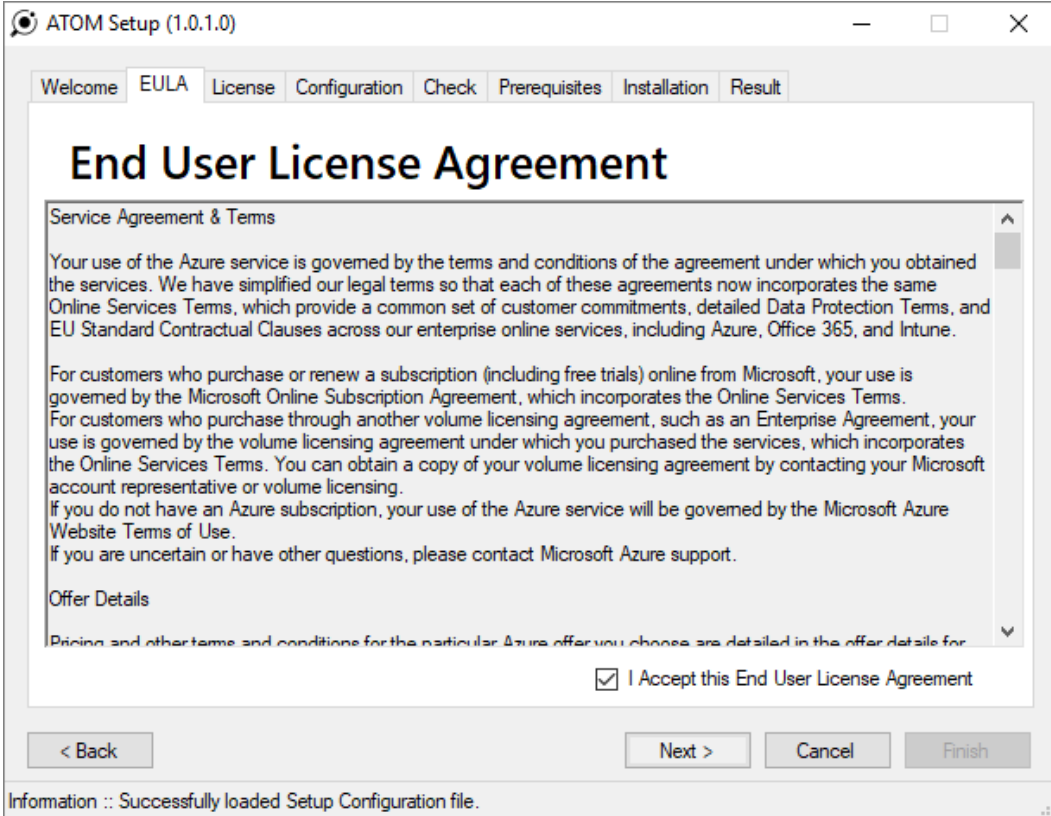


```
--- ATOM Setup Launcher ---
Testing internet connectivity...
Internet connectivity available. Proceeding...
Downloading latest ATOM Setup file...
Starting ATOM Setup Prerequisites Check...
Running supported PowerShell version.
Starting ATOM Setup...
Closing this window in 5 seconds...
***
```

3. Latest ATOM Agent Setup will be downloaded automatically and launched



4. Continue Next and accept the product EULA



ATOM Setup (1.0.1.0)

Welcome EULA License Configuration Check Prerequisites Installation Result

End User License Agreement

Service Agreement & Terms

Your use of the Azure service is governed by the terms and conditions of the agreement under which you obtained the services. We have simplified our legal terms so that each of these agreements now incorporates the same Online Services Terms, which provide a common set of customer commitments, detailed Data Protection Terms, and EU Standard Contractual Clauses across our enterprise online services, including Azure, Office 365, and Intune.

For customers who purchase or renew a subscription (including free trials) online from Microsoft, your use is governed by the Microsoft Online Subscription Agreement, which incorporates the Online Services Terms. For customers who purchase through another volume licensing agreement, such as an Enterprise Agreement, your use is governed by the volume licensing agreement under which you purchased the services, which incorporates the Online Services Terms. You can obtain a copy of your volume licensing agreement by contacting your Microsoft account representative or volume licensing.

If you do not have an Azure subscription, your use of the Azure service will be governed by the Microsoft Azure Website Terms of Use.

If you are uncertain or have other questions, please contact Microsoft Azure support.

Offer Details

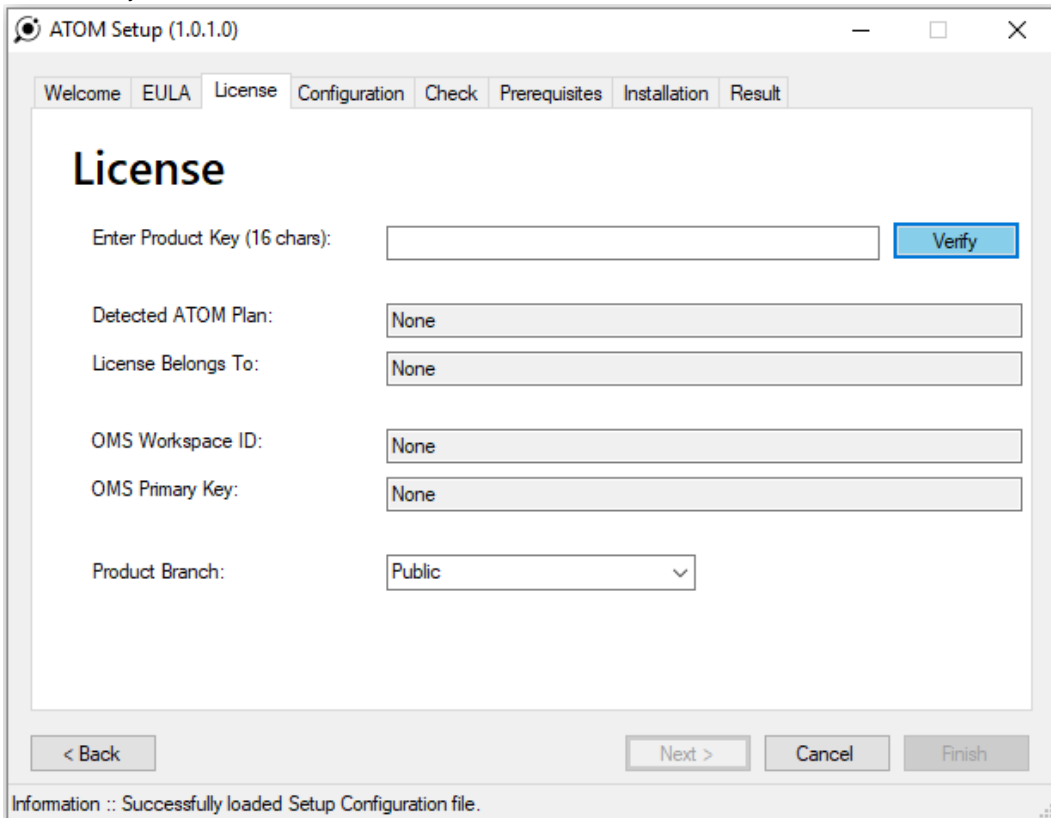
Pricing and other terms and conditions for the particular Azure offer you choose are detailed in the offer details for

☒ I Accept this End User License Agreement

< Back Next > Cancel Finish

Information :: Successfully loaded Setup Configuration file.

5. Enter the license information. You need to enter the Product Key. OMS Workspace ID and OMS Primary Key will be loaded automatically when you hit the Verify button. Select the required product branch – if you are not sure, leave the selection on Public



ATOM Setup (1.0.1.0)

Welcome EULA License Configuration Check Prerequisites Installation Result

License

Enter Product Key (16 chars):

Detected ATOM Plan:

License Belongs To:

OMS Workspace ID:

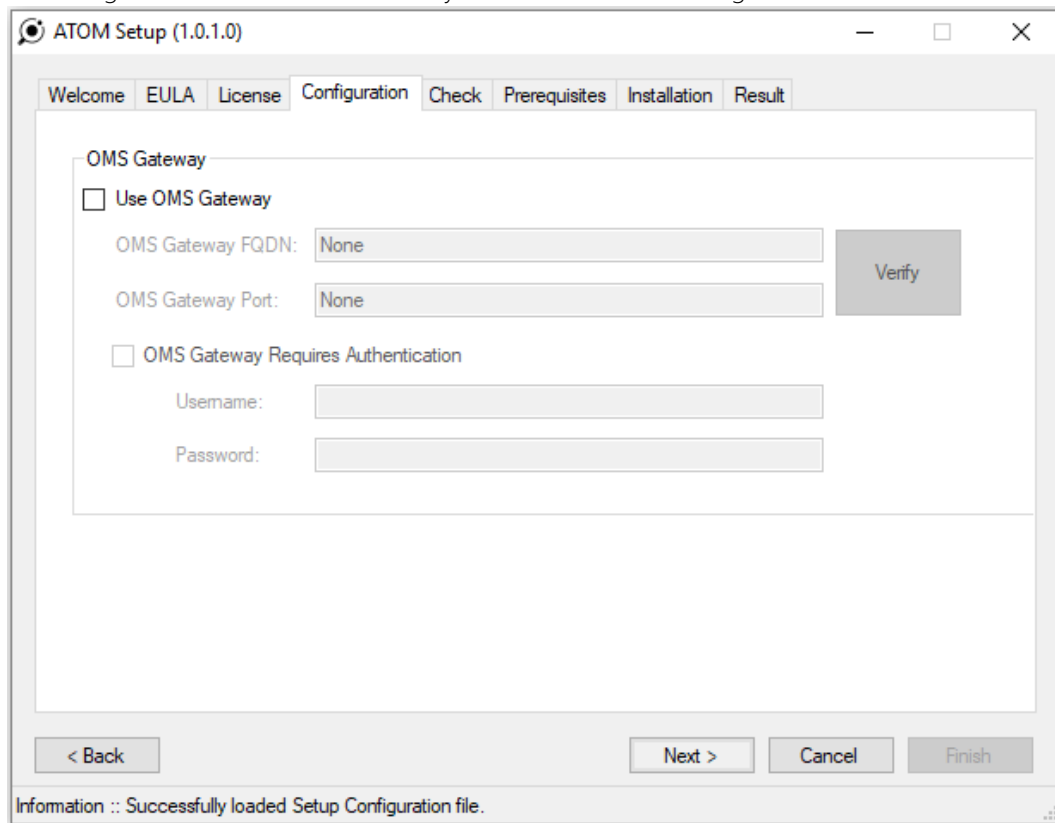
OMS Primary Key:

Product Branch:

< Back Next > Cancel Finish

Information :: Successfully loaded Setup Configuration file.

- On the Configuration tab, you can configure the OMS Gateway. When you use the OMS Gateway, ATOM Agent features are therefore very limited for the time being

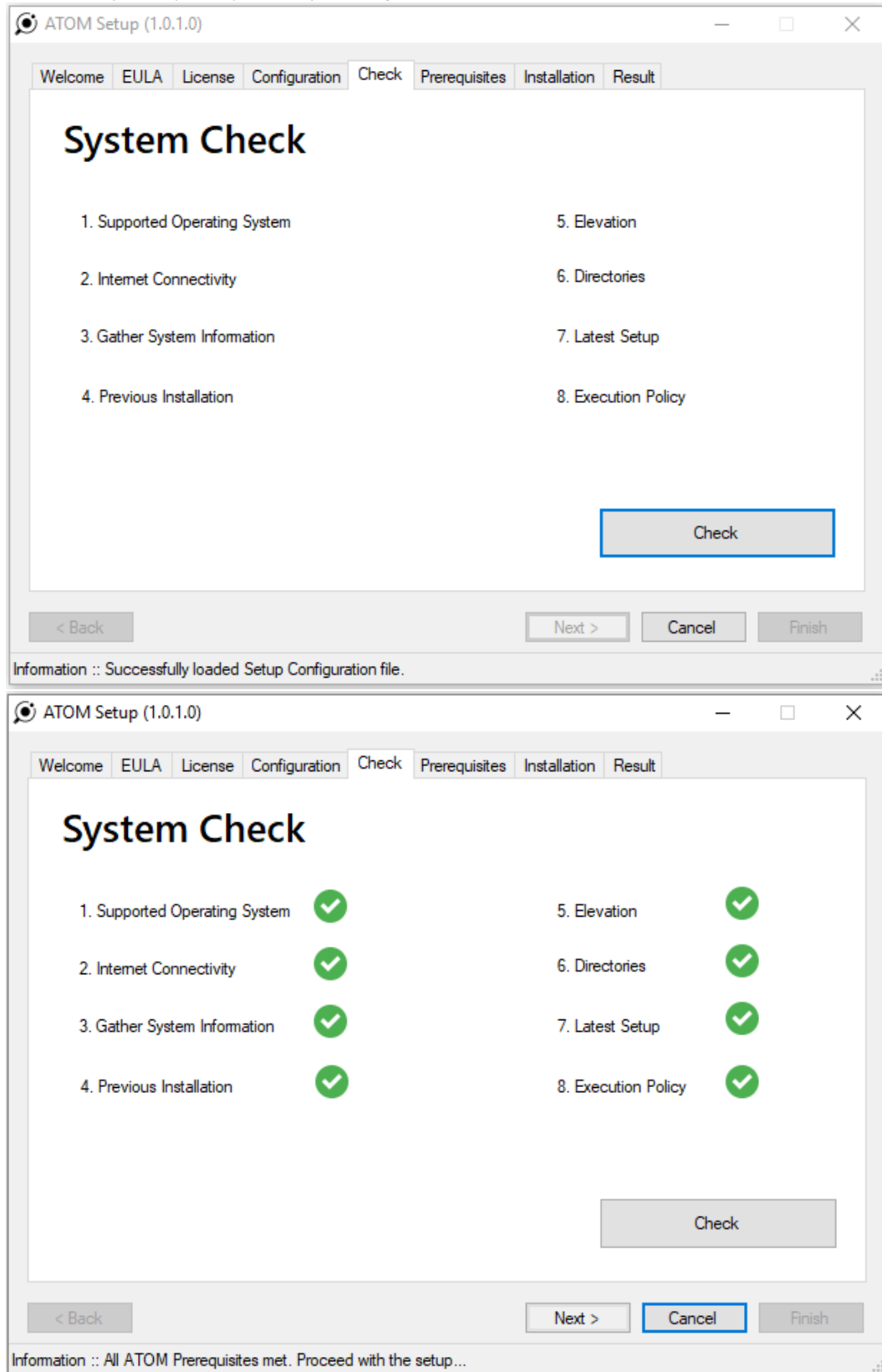


The screenshot shows the ATOM Setup (1.0.1.0) window with the Configuration tab selected. The window has a title bar with the ATOM logo and the text "ATOM Setup (1.0.1.0)". Below the title bar is a tabbed interface with tabs for Welcome, EULA, License, Configuration (selected), Check, Prerequisites, Installation, and Result. The Configuration tab contains the following elements:

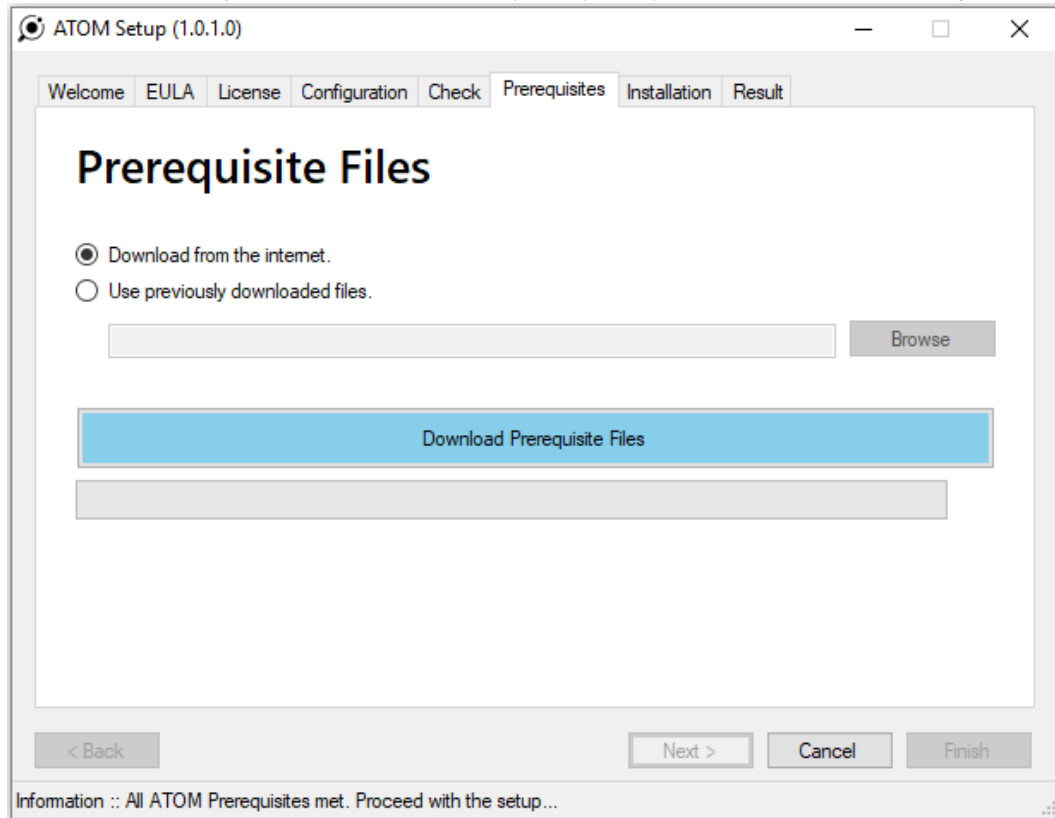
- OMS Gateway** section:
 - ☐ Use OMS Gateway
 - OMS Gateway FQDN:
 - OMS Gateway Port:
 -
 - ☐ OMS Gateway Requires Authentication
 - Username:
 - Password:

At the bottom of the window, there are four buttons: "< Back", "Next >", "Cancel", and "Finish". Below these buttons is a status bar that reads "Information :: Successfully loaded Setup Configuration file."

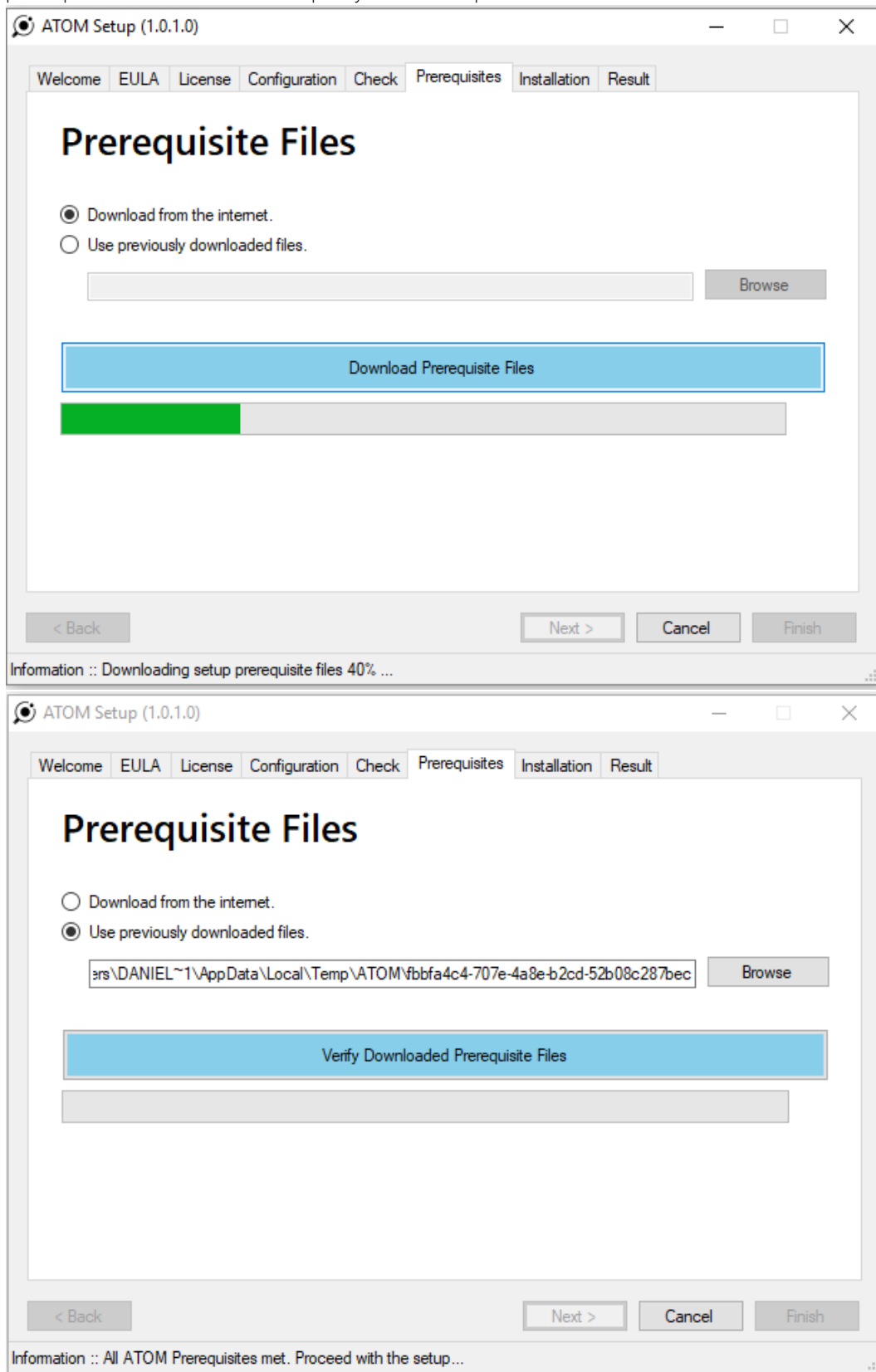
7. Check the system prerequisites by clicking on the Check button



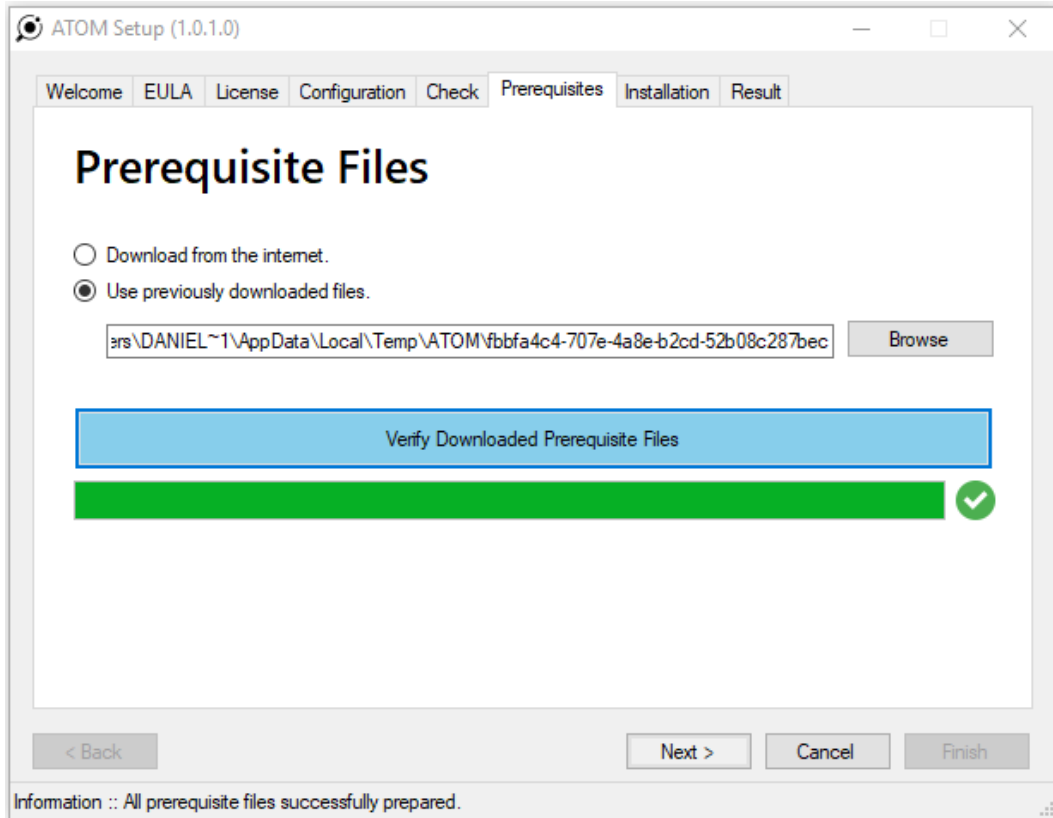
8. On the next screen you can download the required prerequisites files for the ATOM agent



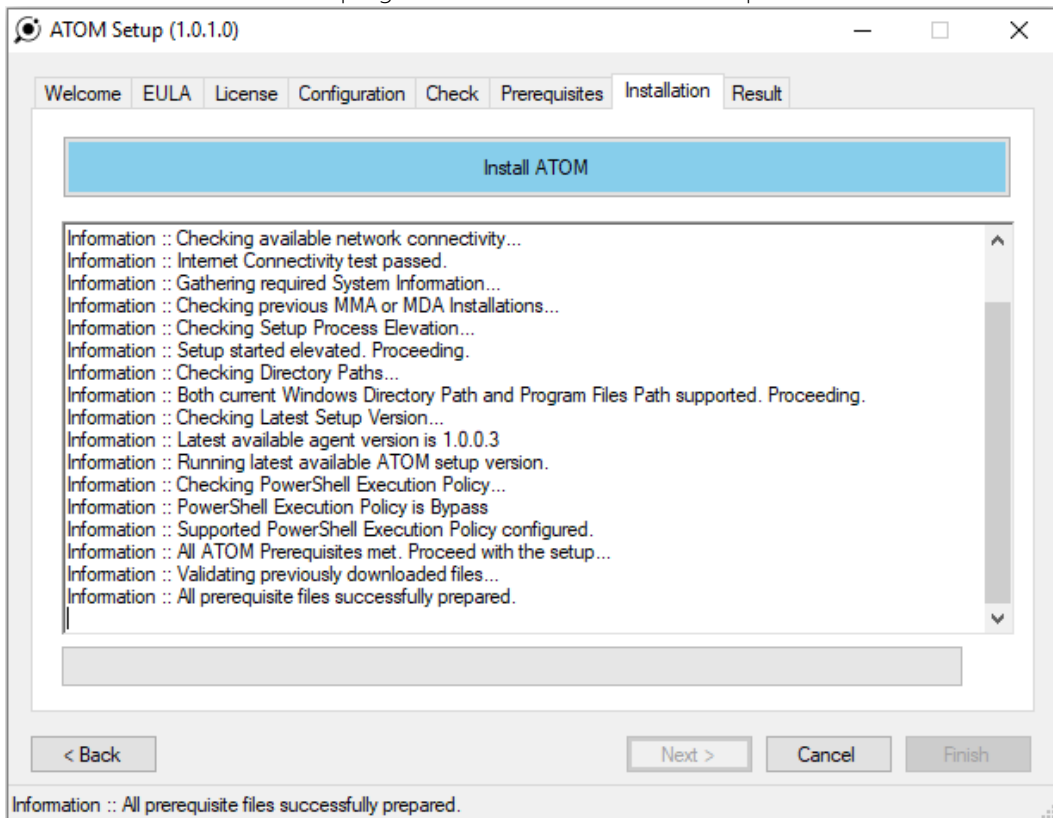
9. You can choose to download the prerequisites from the internet or use the previously downloaded prerequisites files and therefore specify the source path



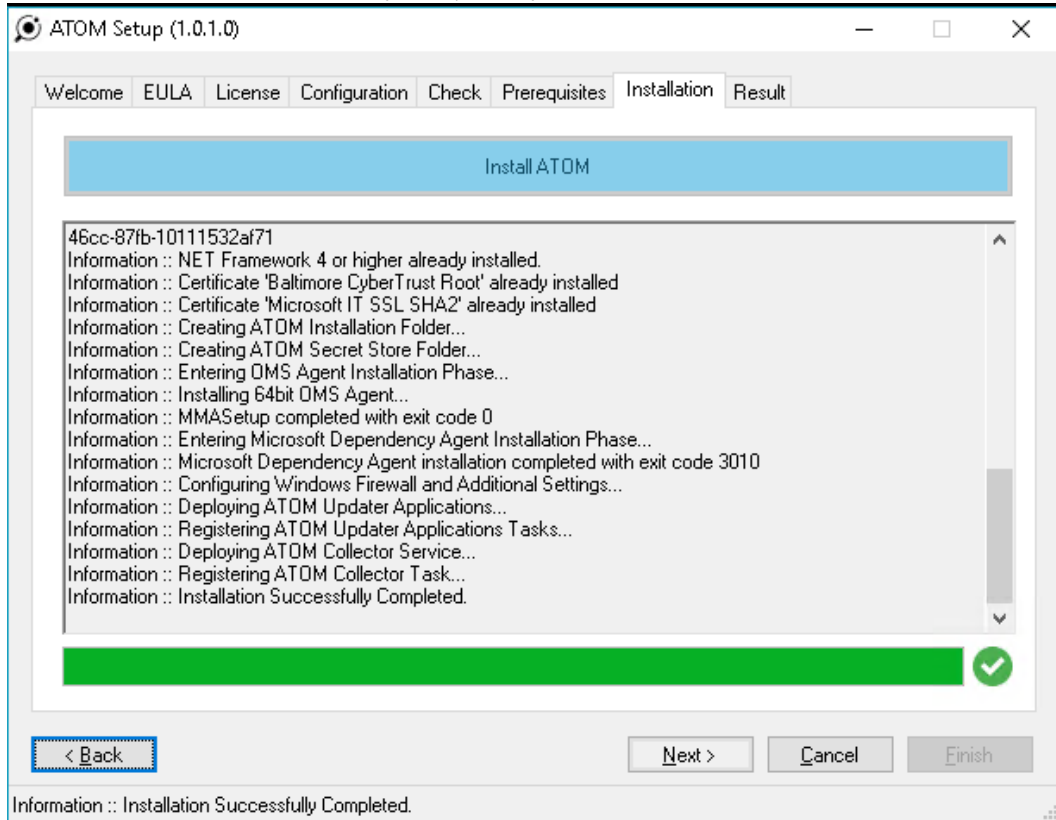
10. When the prerequisites files are successfully downloaded or verified you can continue



11. On the next screen you can initiate the ATOM Agent Installation by clicking on the Install ATOM button. You can see the basic progress of the installation in this step as well

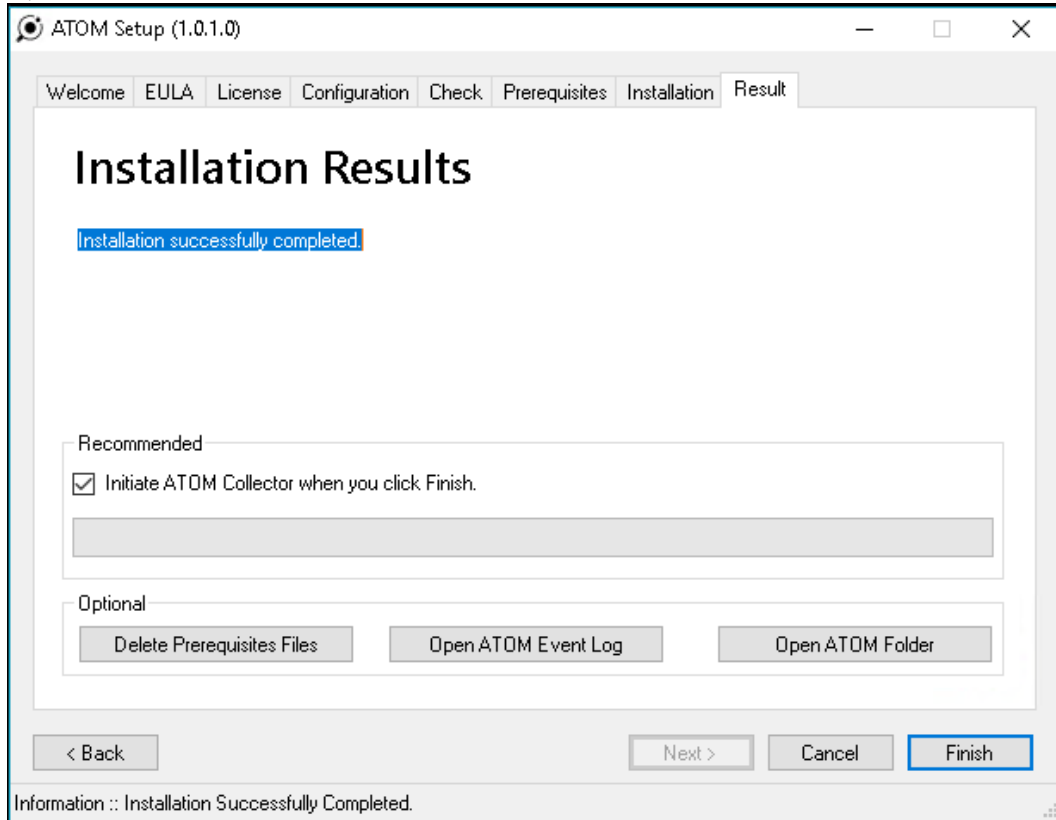


12. When the installation is successfully completed you can continue on the next screen



13. In the final step of the installation you can see the installation results and finish the installation wizard. Optionally you can use additional options:
- Initiate ATOM collector when you click Finish
 - Delete Prerequisites Files
 - Open ATOM Event Log

- Open ATOM Folder



3.1.1 WINDOWS AGENT UNATTENDED INSTALLATION

Unattended setup does not support OMS Gateway at all! Unattended setup: atom_setup_unattended.exe

Place the configuration.bin file to the same folder as the atom_setup_unattended.exe Download Link:

http://www.atom.ms/_download/atom_setup_unattended.exe

PARAMETER ShowEULA

- YES = Displays ATOM product EULA.

PARAMETER AcceptEULA

- YES = Accepts ATOM product EULA.
- Required for the setup process.

PARAMETER ProductKey

- Defines ATOM Product Key (16 chars)
- Required for the setup process.

PARAMETER ProductBranch

- Defines ATOM Branch (Private/Internal/Preview/Public)
- Required for the setup process.

PARAMETER InitiateATOMCollectorWhenFinished

- YES = Instructs the setup to initiate ATOM collector when the setup finish.

EXAMPLE Run ATOM Agent Setup to show the product EULA

- `.\atom_setup_unattended.exe -ShowEULA`

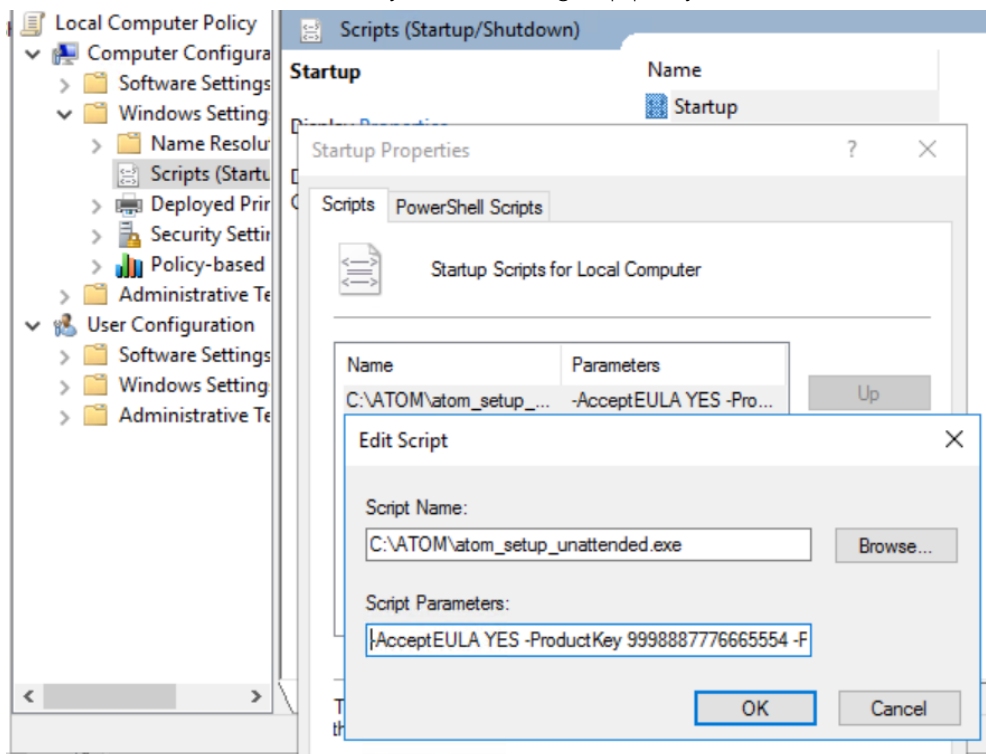
EXAMPLE Run ATOM Agent Setup to install the product in Public branch

- `.\atom_setup_unattended.exe -AcceptEULA YES -ProductKey 1112223334445556 -ProductBranch Public`

EXAMPLE Run ATOM Agent Setup to install the product in Public branch and run collector when the setup finish

- `.\atom_setup_unattended.exe -AcceptEULA YES -ProductKey 1112223334445556 -ProductBranch Public -InitiateATOMCollectorWhenFinished`

To use it for automatic installation you can utilize group policy:



3.1.2 WINDOWS AGENT INSTALLATION OUTCOMES

- Microsoft Monitoring Agent
- Microsoft Dependency Agent
- Windows Scheduled Tasks in the ATOM folder.
- Windows Service ATOM Service Monitoring
- Event Log: ATOMHealth
- Registry Key and subkeys in path `HKEY_LOCAL_MACHINE\SOFTWARE\ATOM`
- Directory `[OSDisk]:\Program Files\ATOM`

- Windows PowerShell module OMSDataInjection will be installed after the initial run of the ATOM collector
- Certificate Microsoft IIS Root Certificate - msitwww2(1).crt
- Certificate Baltimore CyberTrust Root Certificate - bc2025.crt
- Local Windows Firewall reconfigured to allow the outgoing communication on port 443 and on port 8084

3.2 LINUX / UNIX AGENT

If your Linux computer needs to communicate through a proxy server to Log Analytics, the proxy configuration can be specified on the command line by including -p [protocol://][user:password@]proxyhost[:port]. The proxyhost property accepts a fully qualified domain name or IP address of the proxy server. For example: https://user01:password@proxy01.contoso.com:30443

1. To configure the Linux computer to connect to Log Analytics, run the following command providing the workspace ID and primary key copied earlier. The following command downloads the agent, validates its checksum, and installs it. *wget https://raw.githubusercontent.com/Microsoft/OMS-Agent-for-Linux/master/installer/scripts/onboard_agent.sh && sh onboard_agent.sh -w -s*
2. To configure the Linux computer to connect to Log Analytics in Azure Government cloud, run the following command providing the workspace ID and primary key copied earlier. The following command downloads the agent, validates its checksum, and installs it. *wget https://raw.githubusercontent.com/Microsoft/OMS-Agent-for-Linux/master/installer/scripts/onboard_agent.sh && sh onboard_agent.sh -p [protocol://][user:password@]proxyhost[:port] -w -s -d opinsights.azure.us*
3. Restart the agent by running the following command: *sudo /opt/microsoft/omsagent/bin/service_control restart []*
4. Install the Dependency Agent by running the following command: *wget --content-disposition https://aka.ms/dependencyagentlinux -O InstallDependencyAgent-Linux64.bin sudo sh InstallDependencyAgent-Linux64.bin -s*

For more information about the installation of required agents on Linux/UNIX operating systems, please visit the following websites:

- <https://docs.microsoft.com/cs-cz/azure/log-analytics/log-analytics-quick-collect-linux-computer>
- <https://docs.microsoft.com/en-us/azure/monitoring/monitoring-service-map-configure>

3.2.1 LINUX/UNIX AGENT INSTALLATION OUTCOMES

- Microsoft Monitoring Agent
- Microsoft Dependency Agent