

GRAPEVINE WORLD - LIGHTPAPER

**BREAKING DATA BARRIERS AND
BUILDING A NEW HEALTH ECONOMY
TO IMPROVE HEALTHCARE
WORLDWIDE.**

VERSION 2.3

grapevine
WORLD

EXECUTIVE SUMMARY

GRAPEVINE WORLD
ADDRESSES ONE OF THE
BIGGEST BARRIERS TO
CHANGE IN HEALTHCARE –
LACK OF DATA
INTEROPERABILITY.

2

While nearly every other sector churns with rapid transformation wrought from the insights of Big Data, healthcare stagnates, stunted by a legacy of bloated, piecemeal and uncoordinated technology development.

It is a legacy present in the smallest interactions to the largest infrastructure projects. The local hospital tabulates data in a different format to the local family doctor, leading to errors in medication prescription. The traveling expat cannot access his own health data when requiring treatment away from home.

In the WHO's 2017 report⁰¹⁾, assessing progress on the UN's Sustainable Development Goals,⁰²⁾ lack of

empirical data is cited as one of the major obstacles to formulating the necessary policy to “ensure healthy lives and promote well-being for all at all ages.”

Solving the interoperability problem is a vital prerequisite for this kind of broad-scale data collection. If every health facility in Cameroon uses a proprietary IT system – unable to seamlessly exchange data with others – how can we hope to corroborate data on every case of tuberculosis?

Without this data, we do not fully understand the problem. Without a full understanding of the problem, we cannot formulate an appropriate response.

01) "<http://apps.who.int/iris/bitstream/10665/255336/1/9789241565486-eng.pdf?ua=1>", last accessed: March 16, 2018

02) "<http://www.un.org/sustainabledevelopment/sustainable-development-goals/>", last accessed: March 16, 2018

HOW GRAPEVINE WORLD SOLVES THE INTEROPERABILITY PROBLEM

Grapevine World is a decentralized, borderless ecosystem for the seamless, standardized exchange of healthcare data.

In it, health data is exchanged according to Integrating the Healthcare Enterprise (IHE) methodology⁰³⁾ – an existing set of standards that has been used in federal level projects worldwide.

Patients gain ownership of their health data.

They can access their data at any time, anywhere. They decide who to share their data with, and for what use, granting explicit consent on a case-by-case basis - with privacy assured by full data anonymization.

Every use of their data is rewarded with the blockchain based Grapevine Tokens (Gvine), that can be used in exchange for products and services – apps, gadgets, medical advice and care.

Health organizations gain access to vast troves of previously inaccessible data.

Universities, Pharma, technology companies, medical device manufacturers, public sector entities and Healthcare Provider Organizations (HPOs) can all source data - with the authorization to use it - for research, education, software development and any other conceivable health project.

The introduction of Grapevine Tokens (GVINE) creates a new health economy.

Patients gain access to a wider, borderless choice of healthcare, able to tap into a globalized expert network for consultation and care; alongside apps and gadgets.

Organizations gain entry to an entirely new market, both B2B and B2C. Within Grapevine World, organizations obtain broader access to packaged data products - the end-result of research, perhaps - as well as the services of their peers.

This ecosystem encourages and facilitates collaboration, advancing medical research and stimulating new innovations in pharmaceuticals, service delivery, software, medical devices, consumer gadgets, biotechnology and many others not known yet.

By solving the interoperability problem, Grapevine World unleashes the power of data to radically transform the delivery of healthcare.

WE ANTICIPATE THE
HEALTH DATA MARKET
TO INCREASE IN VALUE
FROM AN ESTIMATED
\$54 BILLION TODAY TO
\$123 BILLION BY 2023.
THE AIM OF GRAPEVINE
WORLD IS TO CAPTURE
A SIGNIFICANT
PROPORTION OF THIS
MARKET

4

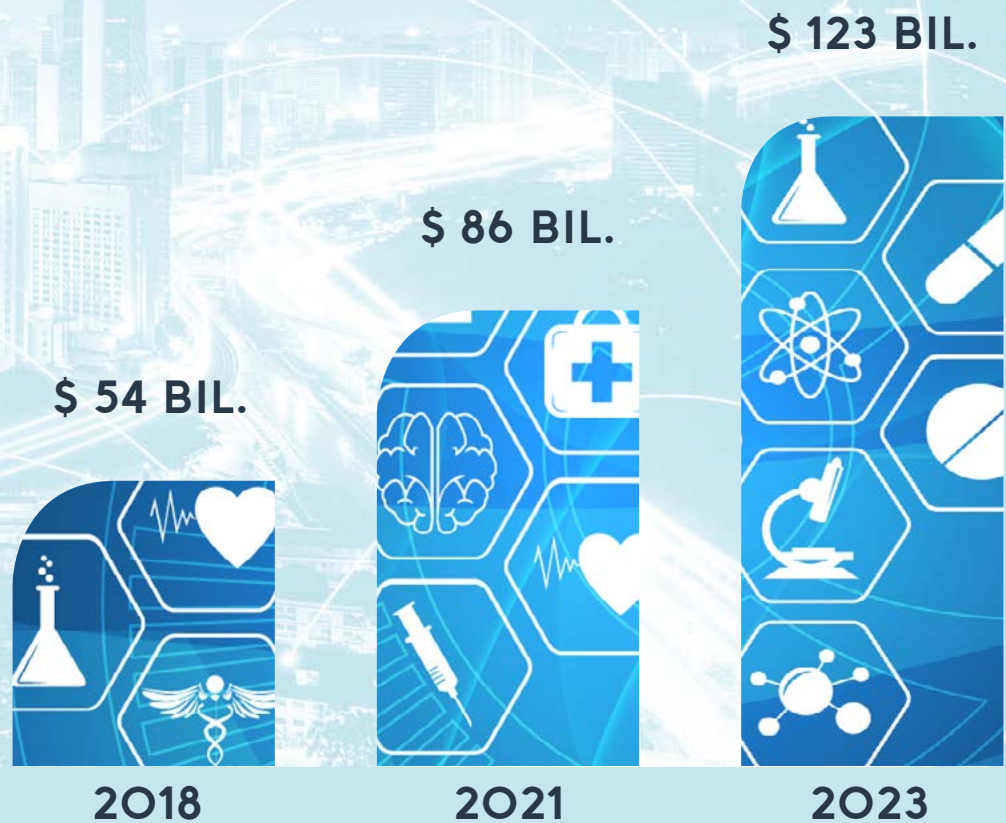


Figure 01: Market potential

Figure 02: The two pillars of Grapevine World: IHE methodology and blockchain technology



HOW GRAPEVINE WORLD IS BUILT

5

Grapevine World is built on two pillars:

- IHE methodology
- Blockchain technology

IHE methodology

IHE methodology rests on a proven set of data exchange standards, used for decades as the foundation for successful collaborative frameworks in the healthcare industry. The data exchange in Grapevine World (Grapevine Backbone) is based on these established principles.

The core is Integration Profiles. The IHE has a defined set of standards covering Actors, Transactions and Content. Profiles are built

by selecting the appropriate combination of standards to fulfill the necessary function, packaging content in an agreed-upon format.

By maintaining adherence to these standards, a “common language”⁰⁴⁾ is established, enabling different parts of a system - or different systems - to speak to each other.

The Grapevine World ecosystem will ensure interoperability by comprising only IHE approved vendors, applications, and architectures.

04) "https://wiki.ihe.net/index.php/PCC_TF-1/About", last accessed: March 16, 2018

Blockchain technology

The blockchain serves two purposes:

- Acting as facilitating infrastructure for the data exchange network.
- Providing incentives to participate in the network.

The blockchain provides a completely automated, decentralized system for participants in Grapevine World to enter into smart contracts with each

other. Grapevine World is facilitator only.

The Grapevine Token (GVINE) is the key, acting both as mechanism and incentive. Transactions can only take place once the requisite number of GVINE has been transferred.

For example, if a medical university wants to crowdsource data for a clinical trial, it can search for patients matching its criteria. Once patients have agreed to participate, the data

will be retrieved - but only unlocked with the transfer of GVINE.

Crucially, the system is secure-by-design. No private data is stored on the blockchain itself - only an auditable record of transactions and provenance. All patient data remains with the HPOs, preserving their existing accountability standards.

WHAT MAKES GRAPEVINE WORLD UNIQUE

WE ARE NOT THE ONLY PLAYERS BUILDING A HEALTH DATA ECOSYSTEM. HOWEVER, WE ARE UNIQUE:

// Grapevine World is more than an idea. Its constituent parts already exist.

// Our ecosystem is fully open. Global and accessible to anyone.

IHE standards have already been proven in large-scale projects across the globe. Blockchain technology is already widely used. The Grapevine World team combines decades of international experience in healthcare, technology, law and business.

Grapevine World is open. Most other solutions for health data interoperability are proprietary, which risks propagating the problem, as architectures develop in parallel silos. By contrast, we have deliberately chosen to operate as a non-profit foundation, to ensure Grapevine World remains open to all, driven only by the goal of improving health standards worldwide.

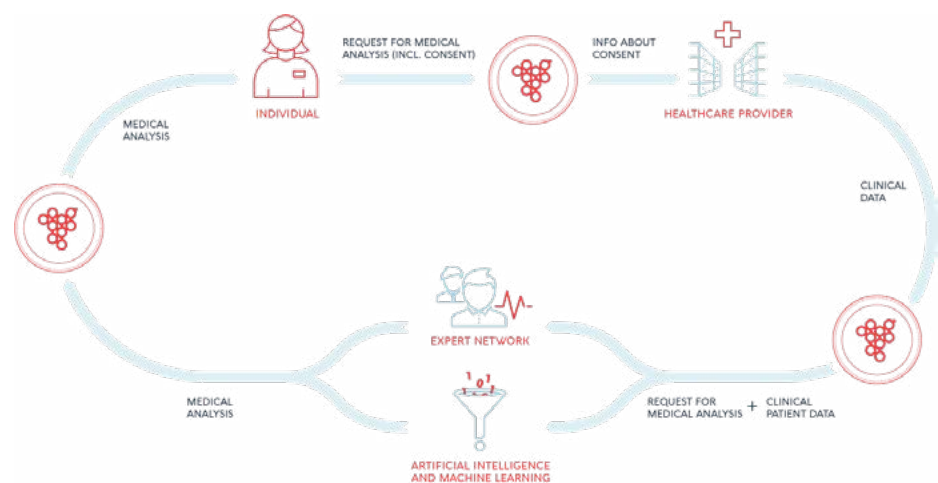
Grapevine World is designed to benefit everyone, and everyone is invited to join. The greater the diversity of participants, the healthier the ecosystem.

GRAPEVINE ELEVATES HEALTHCARE

ACCESS & MANAGE
ALL YOUR
HEALTH DATA



ACCESS HIGH-END
HEALTH SERVICES
(E.G. PERSONALIZED
MEDICAL ANALYSIS)



7

Figure 03: Use case "Personalized Medical Analysis"

INTRODUCING
MEDICAL
RESEARCH 4.0

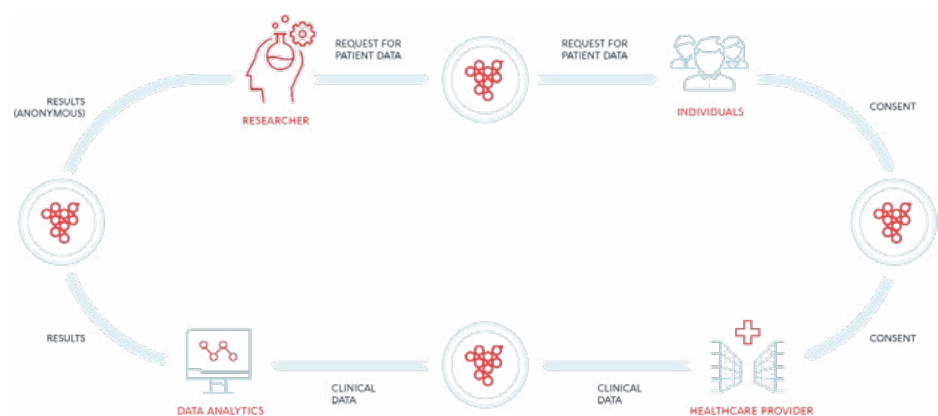


Figure 04: Use case "Medical Research"

DISTRIBUTION OF GVINE

The first GVINE will be distributed amongst early supporters and stakeholders of the existing ecosystem - non-governmental organizations (NGOs), governments, IHE, researchers, scientists, and companies.

An Initial Coin Offering (ICO) in July 2018 will widen participation by making GVINE available to the public, in exchange for digital currency.

Token Specifications

Token Name	Grapevine Token
Ticker Symbol	GVINE
Blockchain Token Standard	ERC20 Ethereum
ICO Token Prize	\$ 0.10 ⁰⁵⁾
ICO Soft Cap	9.642 ETH ⁰⁶⁾
ICO Hard Cap	68.939 ETH ⁰⁷⁾
Total Amount of Tokens	825,000,000
Token Sale (incl. 3% Bounty Program)	45%
Unsold Tokens will be burned.	

Table 1: Token Specifications

BONUS STRUCTURE

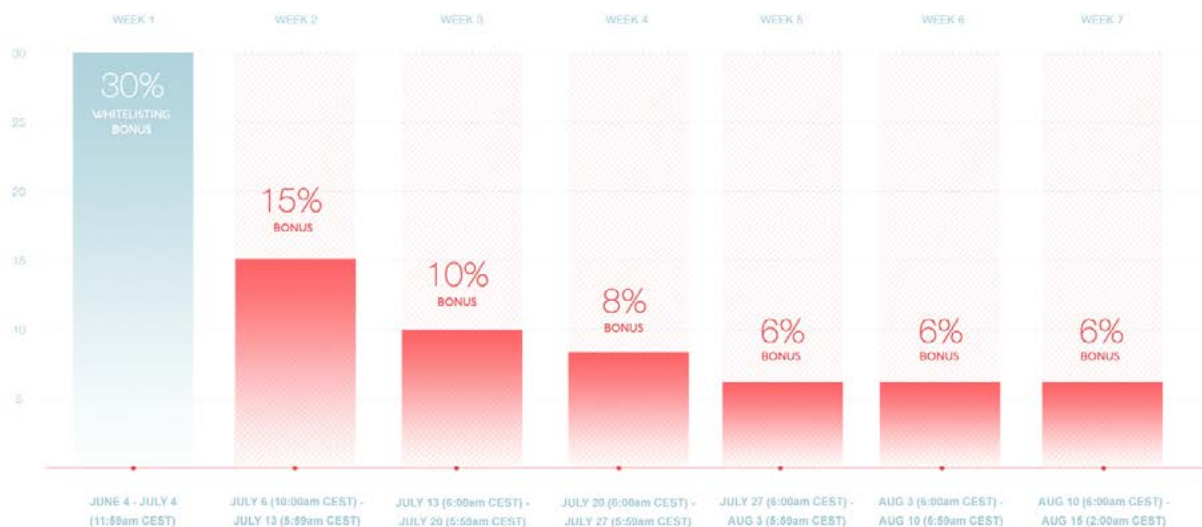


Figure 05: Bonus structure

If you have been whitelisted till July 4 you are entitled for the 30% whitelisting bonus. The whitelisting bonus is valid at any time during the ICO – but only till the soft cap is reached (USD 4,500,000). All bonuses are locked for 6 months after the end of the ICO.

05) 1 GVINE = 0,00021426122728831 ETH (USD exchange rate of date of deployment: July 4, 11am CEST)

06) (USD 4,500,000, exchange rate of date of deployment: July 4, 11am CEST)

07) (USD 30,000,000, exchange rate of date of deployment: July 4, 11am CEST)

ROADMAP

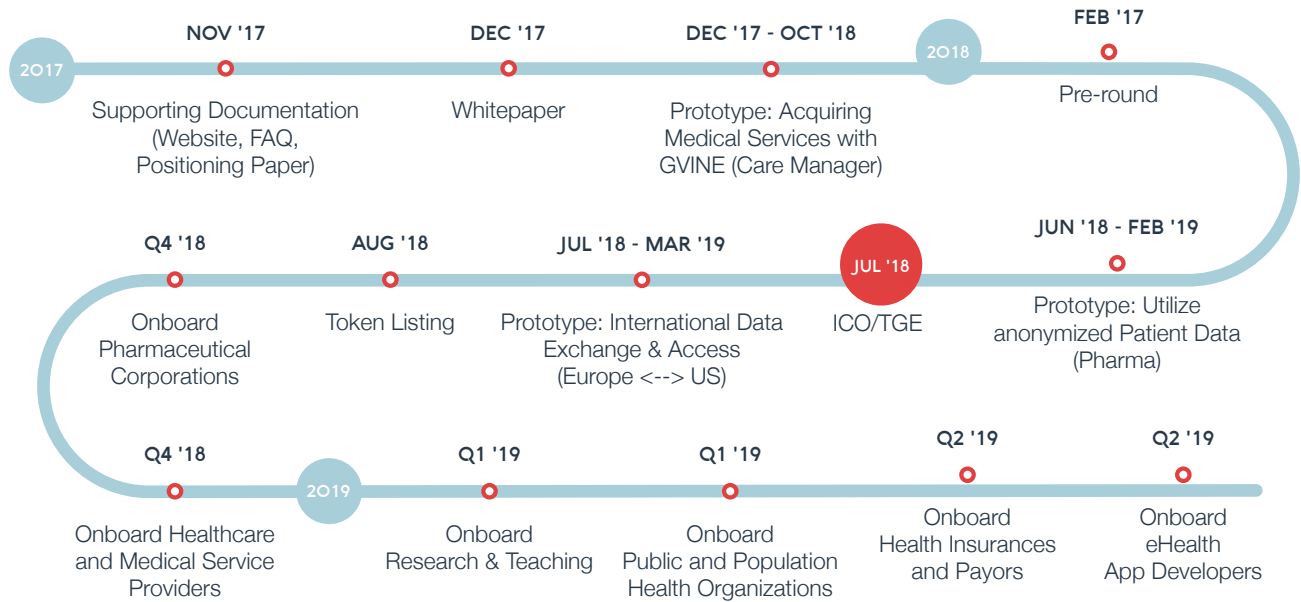


Figure 06: Roadmap

TOKEN DISTRIBUTION

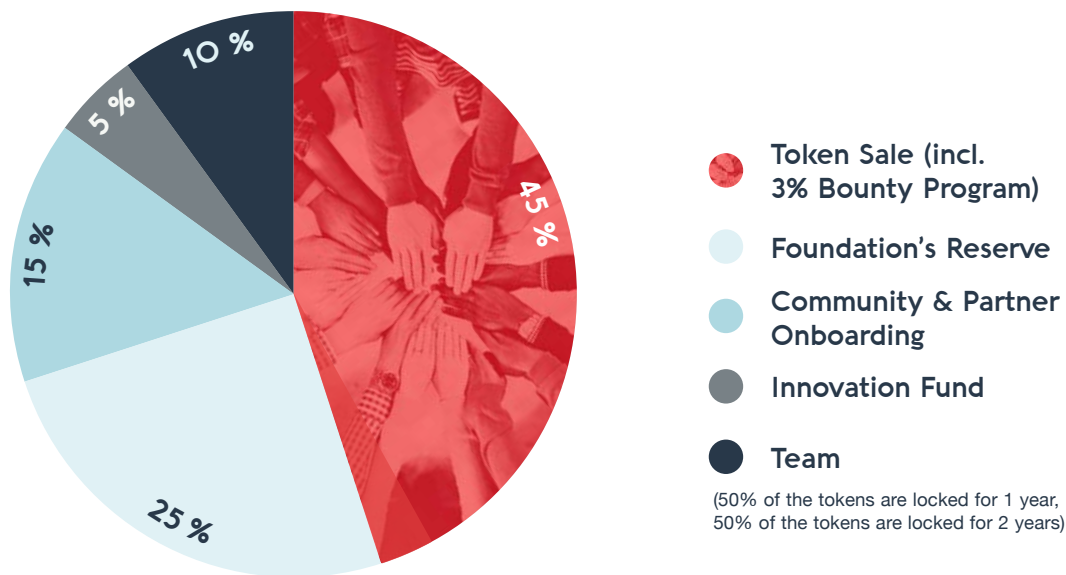
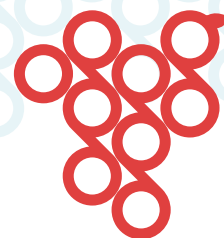


Figure 07: Token Distribution



USE OF FUNDS

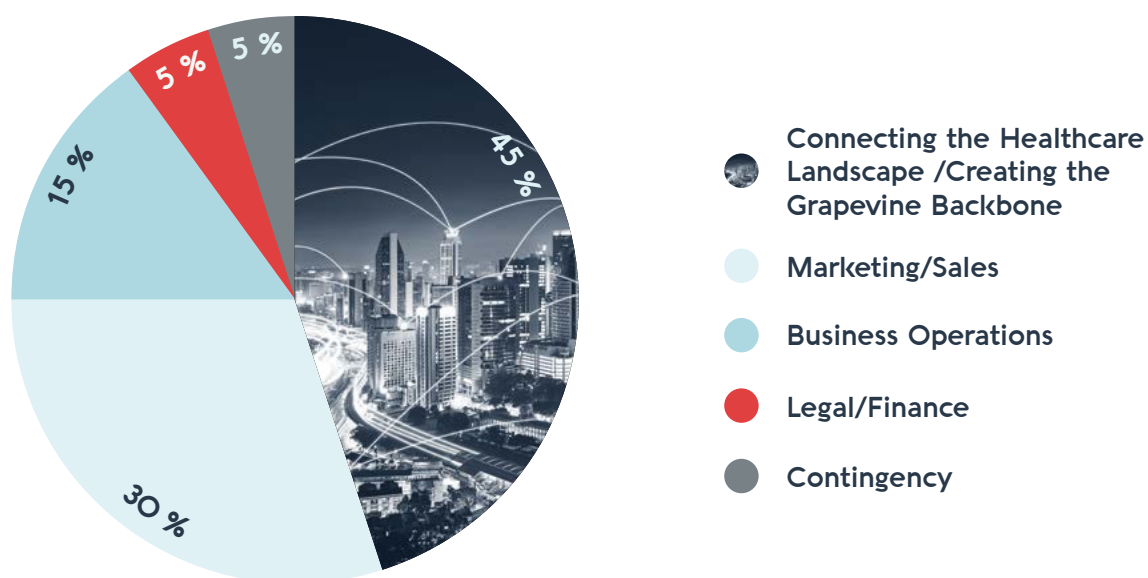


Figure 08: Use of Funds

The Grapevine Foundation will fund its development entirely from the proceeds of Grapevine Tokens.

As Grapevine World grows, the value of the ecosystem will increase in tandem, providing further funding for

future investments. This will allow the Foundation to pay for certain operational services within the ecosystem in exchange for Grapevine Tokens (GVINE).

THE GRAPEVINE ICO TEAM

TEAM



**MARTIN
TIANI**

Founder & Project Sponsor



**WERNHARD
BERGER**

Project Lead & Co-Founder



**JÜRGEN
PRICKEN**

Operations Lead & Co-Founder



**WALTER
SCHLESCHITZ**

Marketing Lead & Co-Founder



**MASSIMILIANO
MASI**

Blockchain, Architecture & Security Lead



**ABDALLAH
MILADI**

Senior Blockchain & Healthcare IT Engineer



**MARTIN
RÜFENACHT**

Community Building Officer



**FELIX
BILER**

Blockchain & Business Analyst



**BOJANA
PAVLOVIC**

Marketing & Project Assistant

ADVISORS



**SASHA
BOROVIK**

Blockchain, Legal & Cryptoeconomics Advisor
Cryptography Asset Group



**JIM
ST. CLAIR**

Blockchain & Interoperability Advisor
Founder
Institute of Healthcare FinTech



**ANDRÉ
FENTON**

Academic Research Advisor
Professor of Neural Science
New York University



**PETER
POKIESER**

Medical Advisor
Unified Patient Program Lead
Medical University of Vienna



**FREDRIK
LINDEN**

eHealth Advisor
Hamling (Owner and Consultant Hamling IT AB)



**YAGUB
RAHIMOV**

Blockchain, Media and ICO Advisor
CEO/Co-Founder
7MARKETZ Group



**PETRA
WILSON**

Data Privacy, Compliance & Governance Advisor
Managing Director and Co-Founder,
Health Connect Partners sprl



**MICHAEL
BAYER**

Corporate Partner Expansion Advisor



**WOLFGANG
SCHUBERT**

Legal Advisor
Managing Partner
BLS Attorneys at Law





CONTACT

For more information about Grapevine World, the ICO in 2018, or if you wish to participate in any way, please contact us at office@grapevineworldtoken.io or visit our websites at grapevineworldtoken.io and grapevineworld.com

CORE OF INTEROPERABILITY //

office@grapevineworldtoken.io
www.grapevineworldtoken.io
www.grapevineworld.com

grapevine
WORLD