

GIJIMA | Integrated Health Solution

AGENDA

- Healthcare In South Africa
- Experience in Healthcare
- Healthcare Services Achievements
- Gijima Healthcare Services
- Gijima Integrated Healthcare Solution
- Patient & Medical Professional Journey

Healthcare In South Africa

South Africa's healthcare sector - R378bn during the 2016/17 financial year (8.3% of national GDP)

249,827 registered practitioners to 56.5 million people

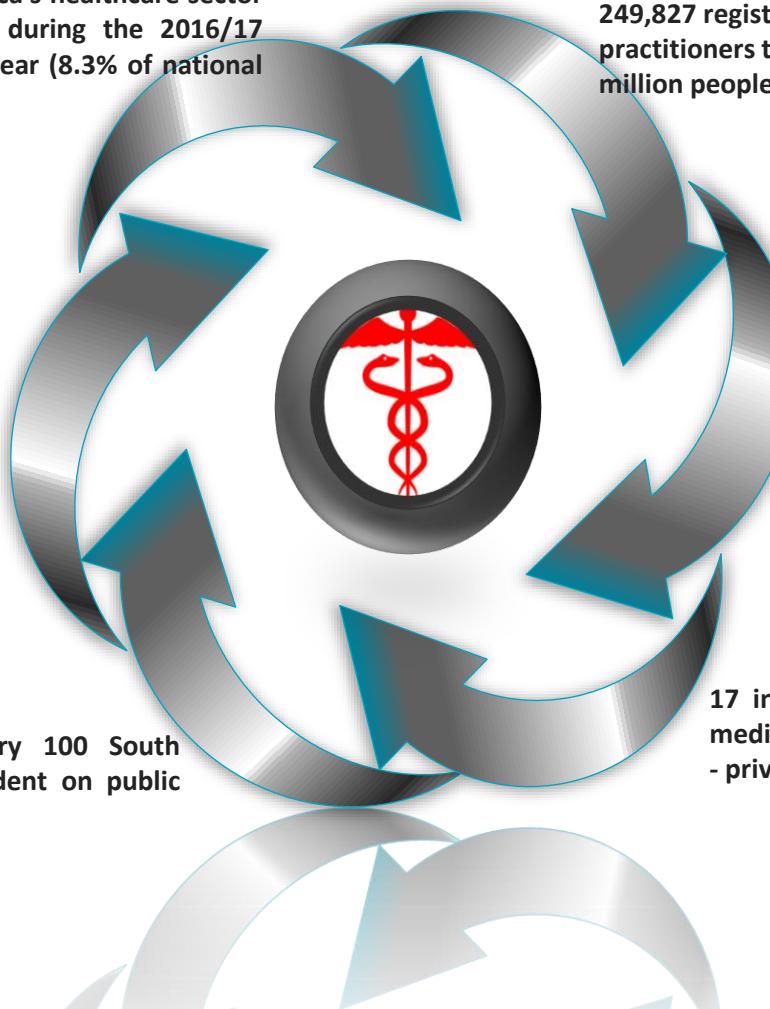
Public healthcare system of 422 hospitals and 3 841 clinics and health centres.

R182.71bn spent in public sector health facilities which serve more than 80% of the population

R189.08bn spent in the private sector

82 out of every 100 South Africans, dependent on public healthcare.

17 in 100 South Africans have medical insurance, the essential - private healthcare.



PRIORITIES TO ACHIEVE THE 2030 VISION GOALS

- Address the social determinants that affect health and disease
 - o Collaborate across sectors, particularly with those departments that have a direct impact on poverty alleviation
 - o Promote healthy diets and physical activity, particularly in schools, at work and in communities
- Strengthen the health system
 - o Improve leadership and management
 - o Make the system more accountable to users
 - o Provide additional capacity and expertise
- Improve health information systems
 - o Prioritise the development and management of data systems
 - o Integrate national, provincial,

- o district, facility and community-based information systems
- o Develop human resources for health information
- Prevent and reduce the disease burden and promote health
 - o Prevent and control epidemic burdens by treating HIV, new epidemics and alcohol abuse

- o Although the private sector serves 17% of the population it is responsible for 50% of total spending
- o Implement proposals for a *continued below*

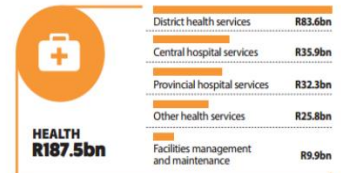
2007 NOW 2025

Public health spending as a % of GDP	3,5%	4,2%	6,2%
High-income countries as % of GDP	6,9%		
Government health spending as a % of total health spending in SA	41%		
Government health spending as a % of total health spending in upper-middle income countries	55%		
Public-health spending (in billions of rands, real)		R135	R255

NATIONAL BUDGET SPEECH 2017

Budget 2017: Health Highlights

- The Department of Health has been allocated R187.5 billion.
- An additional R885 million has been added to support the implementation of the universal test-and-treat policy for HIV.
- R600 million has been set aside for the commissioning of the new Nelson Mandela Children's Hospital.
- Provincial hospital services will be R32.3 billion of the overall health budget.
- Negotiations continue on the Sugar Tax, which will be implemented later this year.
- Over the next three years, R606bn will be spent on health, with R59.5bn to be spent on the HIV/AIDS conditional grant.



National Health Insurance Implications

- Government is committed to achieving universal health coverage.
- National Health Insurance, which has not been given much attention in recent policy announcements, will be moving to a new phase, funded by a National Health Insurance Fund.
- Discussions and preparation for this will take place this year, and policy proposals could include an adjustment to medical aid tax credits. More details will be published in the MTBPS in October 2017.



Experience in Healthcare

Mpumalanga Department Of Health

- Develop & Support Patient Electronic Information System
- Healthcare Standards Consultancy
- Medici Process Improvement
- Integration to RX, PACS
- Patient Record Centralization and Synchronization
- MDOH Network Optimization



National Department of Health

- Patient Information Digitization

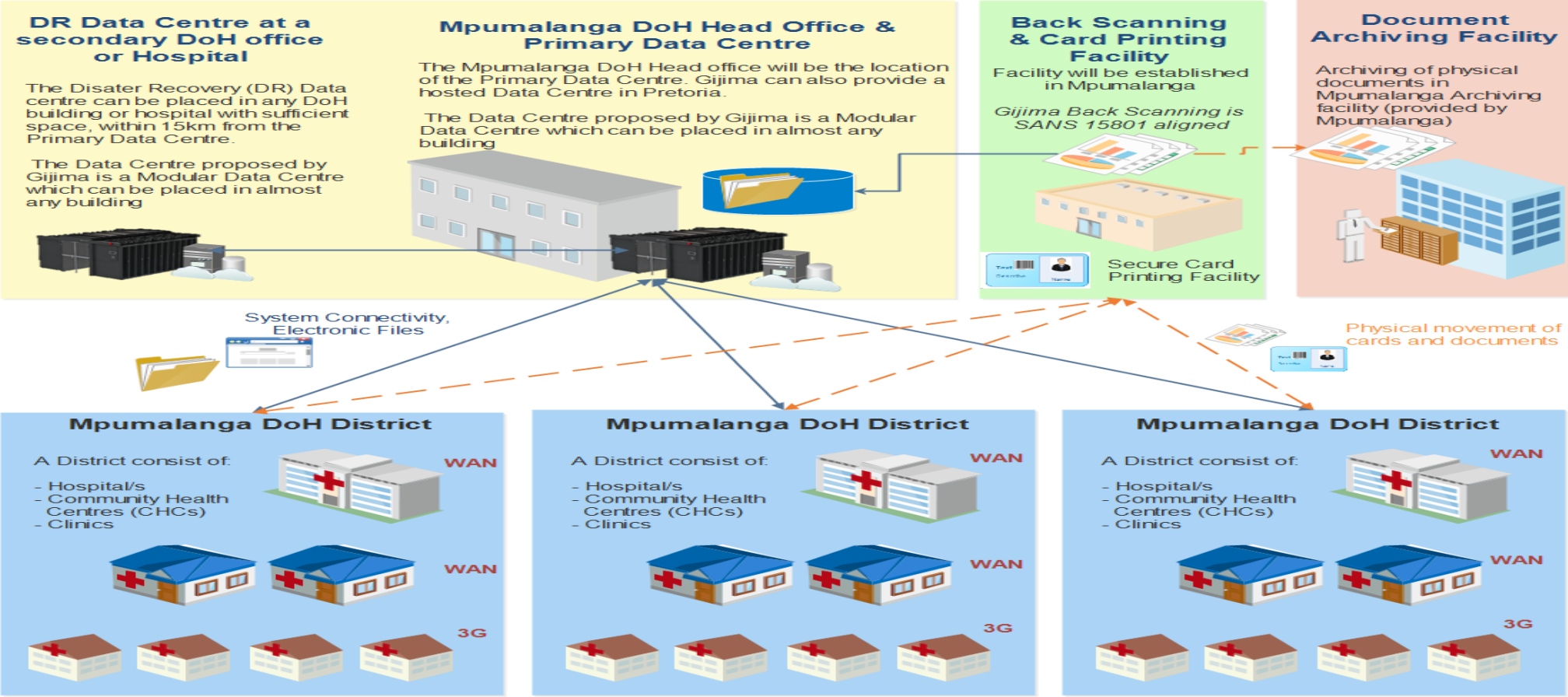


Eastern Cape Department of Health

- Hospital Data Cleansing & Management
- Hospital Debtors and Payments Management



Healthcare Services Achievements



Key Achievements

- Developed PEIS Mpumalanga Department of Health.
- eHealth service platform Servicing 29 Hospitals in 3 Districts
- More than 4.7 million patients
- 11.4 million patient encounters
- 720+ Health Workers
- MIS for Finance and AG
- Patient Information Synchronization

Enrolment Stations	Mobile Enrolment	Enrolment Station Content:	Document Scanners	Biometric Verification	Barcode Scanners
<p>5 per Hospital 1 per CHC 1 per Clinic</p>	<p>4 Mobile Enrolment Stations (For Satellite Clinics)</p>	<ul style="list-style-type: none"> - PC / Notebook - Webcam - Light (for picture) - Backdrop - Enrolment biometric device (fingerprint scanner) - Notebook locks - Notebook bag for mobile enrolment stations 	<p>5 per Hospital 1 per CHC 1 per Clinic</p>	<p>15 per Hospital 5 per CHC 1 per Clinic</p>	<p>5 per Hospital 1 per CHC (for Assets)</p>

Digital Health



- Gijima Mobile Health System
- Gijima Integrated Health System
- Patient Digitalization for on-boarding
- Demographic Surveillance System

Customer Centric



- Engage Customers
- Batho Pele "People First"

Empower Employees



- Modern Workplace
- Integrated Collaboration
- Work Effectively

Optimise Operations



- Reduce Maintenance
- Increase Agility and Scalability
- Governance and Compliance

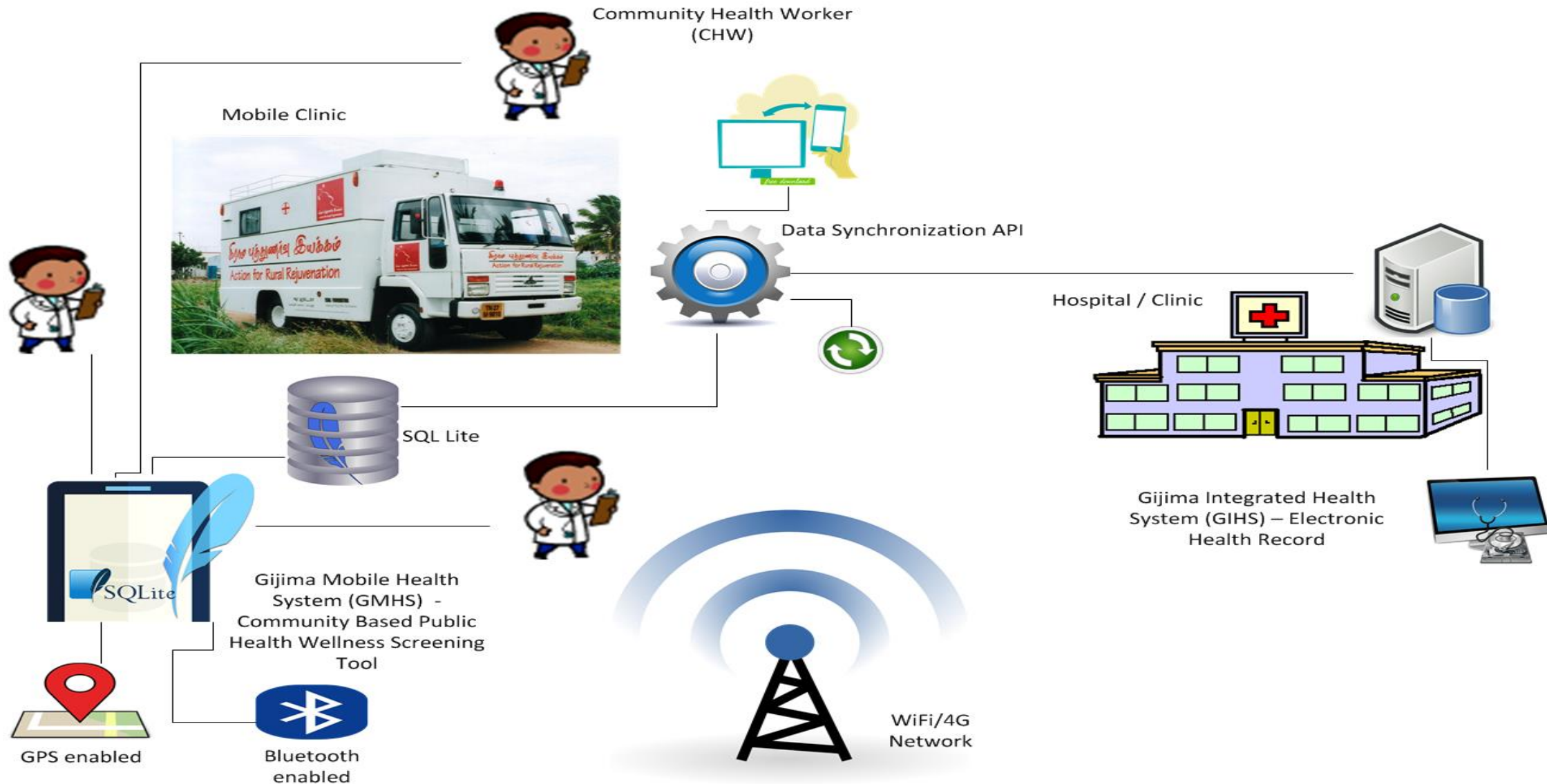
Transform Services



- Cloud Modernisation
- Enterprise Modernisation
- Legacy Transformation
- Reinvent Services
- Accelerate Products



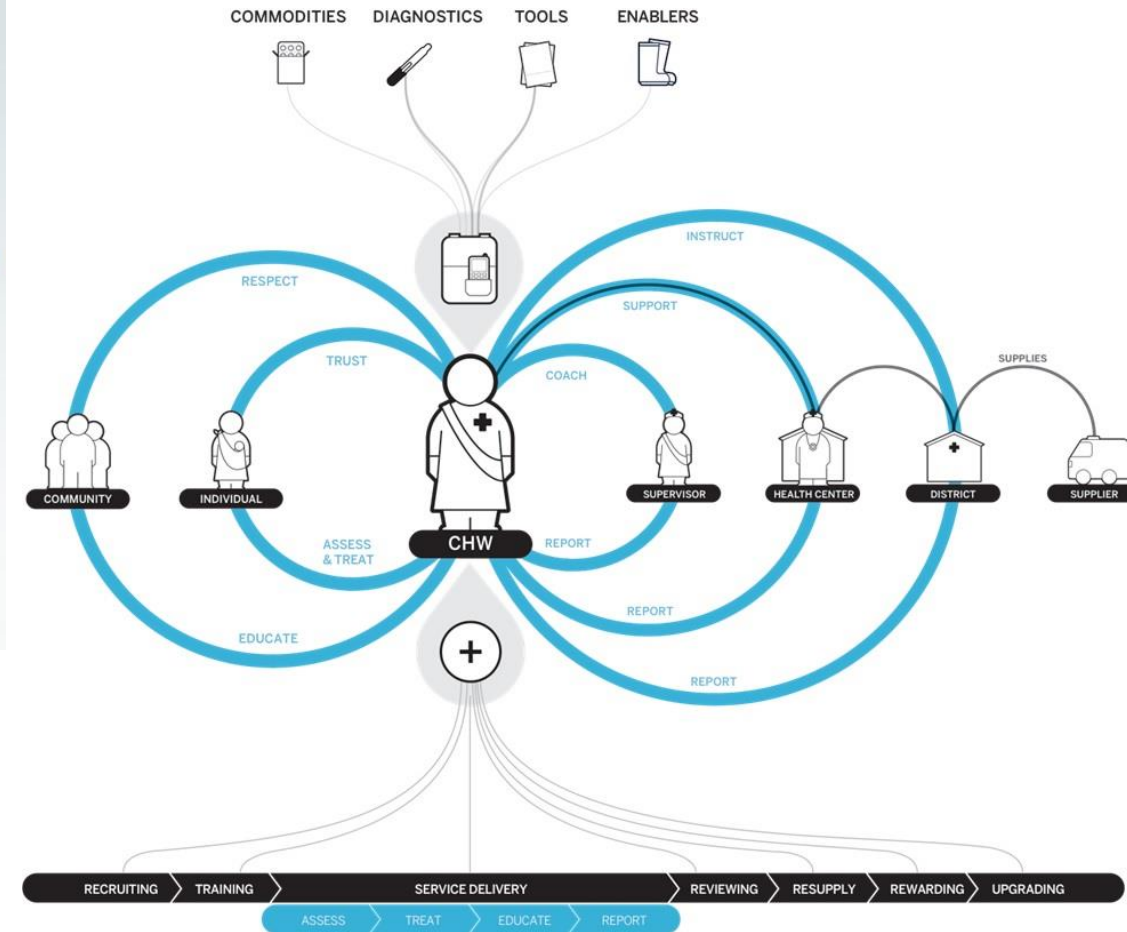
Gijima Integrated Healthcare Solution



Patient



Medic Professional



Demo - GIHS

Windows-style dialog box titled "Login".

Fields:

- Username:
- Password:

Buttons:

- Fingerprint
- Change DB
- OK
- Cancel
- Logout
- Exit

Message: Please Login

Section: Available Sites

Empty area for Available Sites

Bottom buttons: OK, Exit

Thank You