

IOT MANAGEMENT FOR SMART INITIATIVES

Cost-Effective • Scalable • Secure

DimOnOff offers a complete end-to-end wireless control & monitoring system designed to access and manage assets, sensors, meters and any IoT devices.

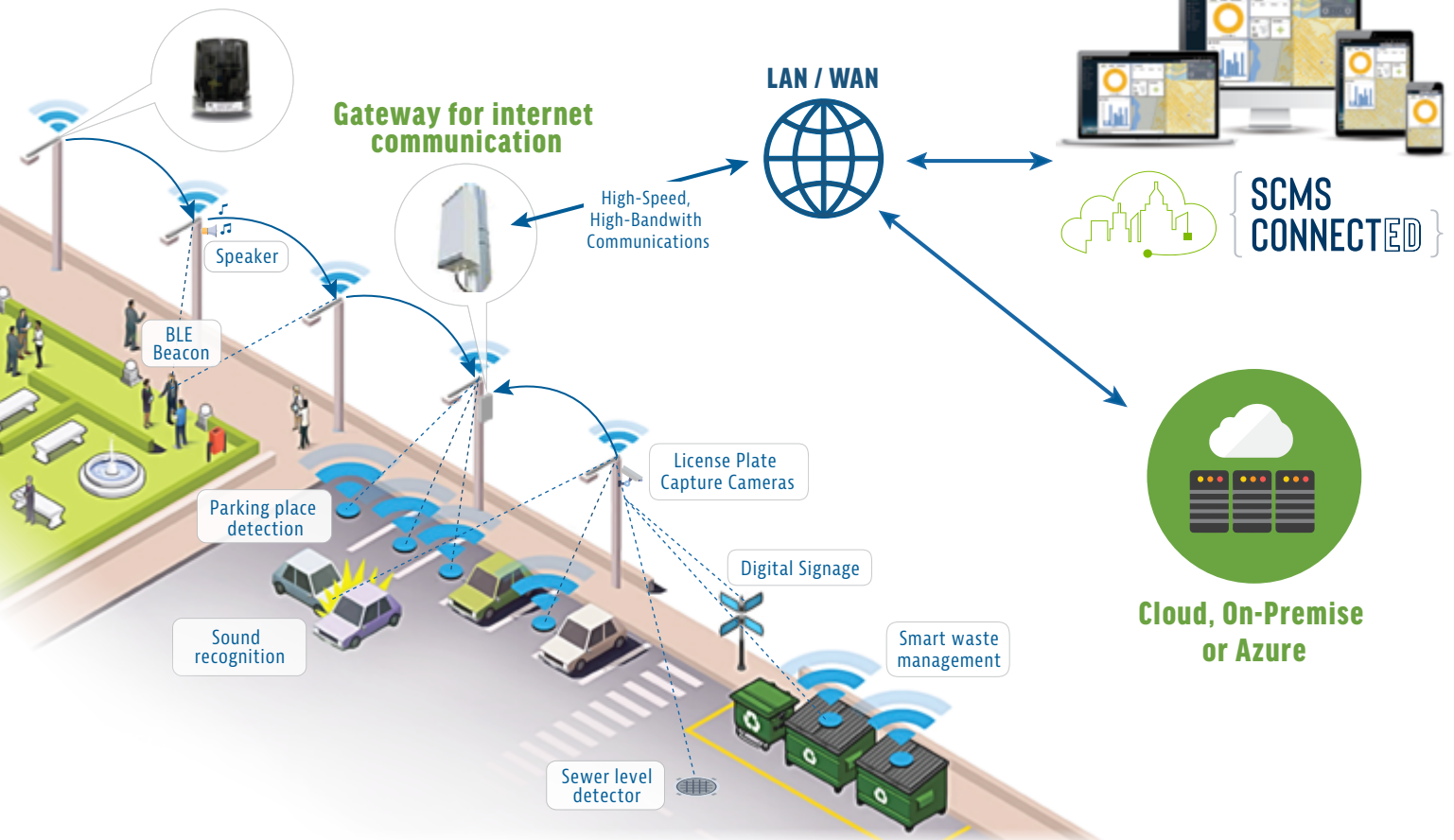


DimOnOff offers IoT management solutions for many sectors that need to become more efficient by gathering better data and distilling insight for improved decision making:

- Utilities
- College and University Campus
- Agriculture
- Cities
- Gated and housing communities
- Security
- Airports/Seaports
- Commercial Buildings
- Shopping centers
- Basically anywhere remote monitoring can support local needs

OPENING THE DOOR TO SMART INITIATIVES

Wireless Smart Relays



As an example, in smart city projects, radio modules, also called “nodes” are connected to every street light. This creates a powerful and cost-effective wireless mesh network that covers an entire area and that allows to manage every type of IoT device installed over time.

Commands and data are conveyed and transmitted to and from SCMS Connect{ED}: a web-based state-of-the-art IoT management platform developed by DimOnOff.

DIMONOFF IN A BLINK:

- More than 300 major projects completed
- +12 years of expertise
- Worldwide Coverage
- Head office in Quebec City, Canada

Honeywell

GENU

Microsoft Partner

NEC

DimOnOff's state-of-the-art IoT management platform is simple to deploy and tailored for smart initiatives that involve connecting and managing devices, including smart LED street lights conversion projects, cameras, sewer levels sensors, digital signage, smart waste management, and much more.

Designed to be fully scalable, from managing a few lights in a commercial parking lot to managing a worldwide portfolio of assets, sensors and IoT devices, the system allows simple real-time management and reporting capabilities as well as a powerful and highly secure platform with fully open and documented APIs.



SCMS CONNECTED
by DimOnOff®



FAST, SECURE & POWERFUL USER-INTERFACE

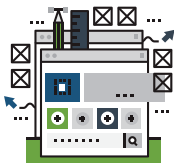
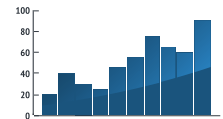
Wireless and/or wired communications are secured and encrypted over standard protocols.

MULTIPLE SITES MANAGEMENT

Multiple users/sites can share the same platform and manage their sites via password and group/business units assignment.

DYNAMIC MAPS, REPORTS & GRAPHICS

Extensive reporting, exports to several standard formats (PDF, XLSX, XLS, CSV, TIFF, RTF, etc.). Automated report generation and distribution.



EASY AND INTUITIVE NAVIGATION & SEARCH TOOLS

From the operations office to the field: every aspect of the software platform and tools to handle field installation & tests, has been developed with Users in mind — a GUI crafted for User's effectiveness.

MULTIPLE DEVICES COMPATIBILITY

Manage and control your device network, securely from anywhere, on any browser, using PCs, smartphones or tablets.



UNLIMITED IOT DEVICES

Unlimited assets insertion, linkable to each other for an optimized inventory. Quick drilldown to the root cause of problematic situations.

CONTROL USERS ACCESS

With SCMS Connect{ED}, users can be granted access with controlled permissions to specific business units, groups or objects, giving them the view of the zones related to their functions.



DASHBOARD WITH DATA VISUALIZATION

Intuitive data visualization is a native feature of the SCMS Connect{ED} platform. In a few clicks, users can view data on a map, in a table, or as a chart, custom fit to the user needs.

WHY PARTNER WITH DIMONOFF?

Take control of your environment.

Deploy a cost-effective IoT wireless network that allows for remote control and management of any asset, sensor, camera, meters and device in any given area.

Unlock the value of the IoT by accessing real-time & reliable insights.

Interact with many communication infrastructures and external data sources.

Leverage open, well documented & accessible APIs.

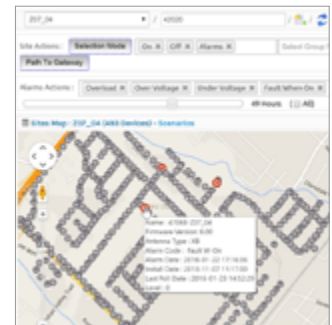
Quickly use a truly proven and demonstrated hyper-scalable platform.

Future-proof your investment and deploy additional sensors, actuators and services as they emerge on the market.

Benefit from financial savings: in the case of smart LED streetlight conversions, save 55% to 70% on asset maintenance operations and energy savings.

DIMONOFF PRODUCT PLATFORM

Litenode™ smart wireless relays, gateways, sensors and interfaces supported by DimOnOff SCMS Connect{ED} are SMART product compliant, with common protocols like DALI and Microsoft Azure IoT, and can support all commercial voltages.



DimOnOff products support :



Dimonoff®

For further information, contact us at:

DimOnOff inc.

2022, Lavoisier — Suite 175
Québec, QC Canada G1N 4L5



+1 418 682-3636

sales@dimonoff.com
www.dimonoff.com