

# Executive Eye

## Stakeholder Management Solution

### Data Sheet

#### 1. Business-Friendly Project KPIs

a. Easy Project Performance Interpretation

Translate project control metrics into deliverables-based performance metrics that are more easily understood by non-project control stakeholders.

b. Stay Up-To-Date on Project Matters

Capture cost and schedule metrics with variations to ensure stakeholders are always up to date with the revised contract, duration and finish dates.

c. Integrated Project Curves

Integrated S-Curves for cumulative physical and cost elements of the project. Integrates with external Project Control applications such as MS Project Online and Oracle Primavera P6 EPPM.

d. Pre-Built Analytics and Reports

Display metrics from multiple perspectives to give quick overview of project performance. Merge cost and schedule progress to correlate spending with actual progress.

e. Adaptive Scaling to Auto-Fit Devices

Content is automatically scaled to fit devices used by stakeholders. Built-in touch-based gesture features allow stakeholders to use the same interaction model they use when interacting with their mobile applications.

f. Variance Trends

Variance analysis presented by comparing planned versus actuals allow stakeholders to gauge trends and deduce whether project is getting back on track or drifting further away from original plans.

## 2. Rich Interactive Briefings

a. Content from Multiple Systems and Devices

Internet of Things (IoT) technology delivers the opportunity for content to be captured directly from source to Executive Eye (X-Eye). From simple site photos and videos to 3D models generated from Drone Feeds, X-Eye renders these multi-format content on the same canvas. These content feeds complement the insights received from financial, schedule, contract and BIM application outputs.

b. Stakeholder Storyboards

Prepare briefing storyboards for stakeholders with different information demands. Content albums facilitate selection of content for stakeholder-specific information demands. This feature allows content to be custom selected based on target audience.

c. Non-Linear Content Presentations

Select content from several albums to present at the same time on the canvas. With multiple content types displayed at the same time, the presenter will be able to move from one content piece to another while keeping other relevant content in view.

This non-linear presentation capability allows presenters to tailor-make their own “storyboard” during the presentation and respond more effectively to questions raised by stakeholders.

d. Geospatial Reporting

This feature allows content to be presented within a geo-spatial context, allowing the audience to better comprehend their project information demands. GPS tagged content helps evaluate progress achieved across reporting periods for a given site location.

e. Multiple Perspective Reporting

Present multiple project perspectives with the rich content repository of X-Eye. With content sourced from IoT devices and project performance metrics captured from external project control applications, X-Eye exploits the opportunities to derive insights from data through data correlation

### **3. Integration to Project Management Solutions**

- a. Integrates with Microsoft Project Online
- b. Integrates with Microsoft Project
- c. Integrates with Oracle Primavera Project Portfolio Management Solution P6 Online
- d. Integrates with Oracle Primavera Project Portfolio Management Solution P6
- e. Future integration to solutions in the Project Management Ecosystem
- f. Import data from Excel Templates
- g. Capture Data Directly within X-Eye

### **4. Real Time Availability of Data Through Multiple Devices**

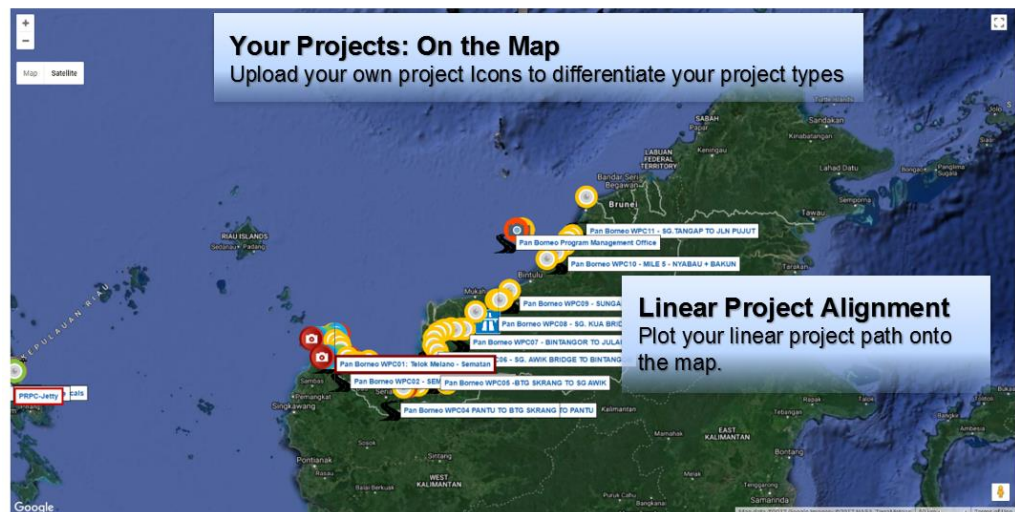
- a. Laptops, Desktops
- b. Large touch screen televisions
- c. Mobile platform (Android & IOS)

## SAMPLE SCREENS: Geospatial Dashboard

The geospatial dashboard is the landing page after a successful login. All projects that the user is a member of will be displayed on the geographical canvas. Each project is represented by a project icon pinned to a specified GPS location. The icon represents the type of project and has a label with the project title. The label outline and background color represents the health of the project from a cost and physical performance measure.

A red outline or background color for the project label means that there are variances between planned and actuals for physical and/or cost factors for the project.

Aside from the project icon, there will be project content

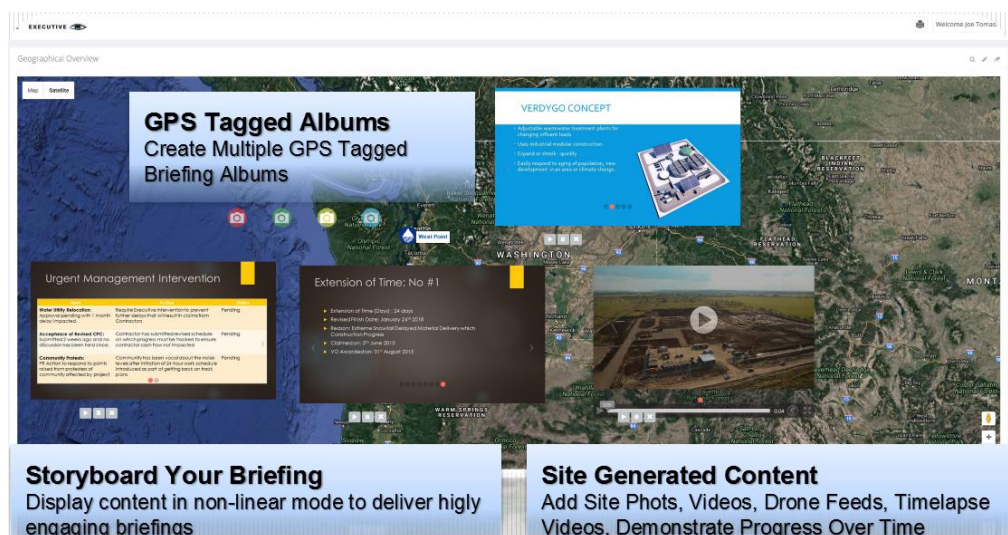


albums that can be created and tagged with GPS locations. These albums will be tagged to GPS locations and will contain photos, videos, IP cams and drone feeds of site location.

## SAMPLE SCREENS: Geo-tagged Briefing

This mode of briefing is performed on the geospatial map where the albums are opened and positioned to different locations on the screen. Content are uploaded to these albums and they include annotations and timestamp information. The content of the album will automatically scroll and they are typically arranged in chornological order, giving an evolutionary view of the progress achieved at that location. User can choose to stop auto scroll for an album at a 'frame' to keep them in view while s/he will explores another album to showcase another perspective of the same project. Each album can be enlarged to highlight details.

Content uploaded to albums are not limited to photos and videos as it can also contain Powerpoint slides that are saved as jpg.



This caters for present day practices where project updates for Executive Briefings are delivered using Powerpoint slides. These slides can be uploaded to X-Eye and can be presented in a non-linear mode.

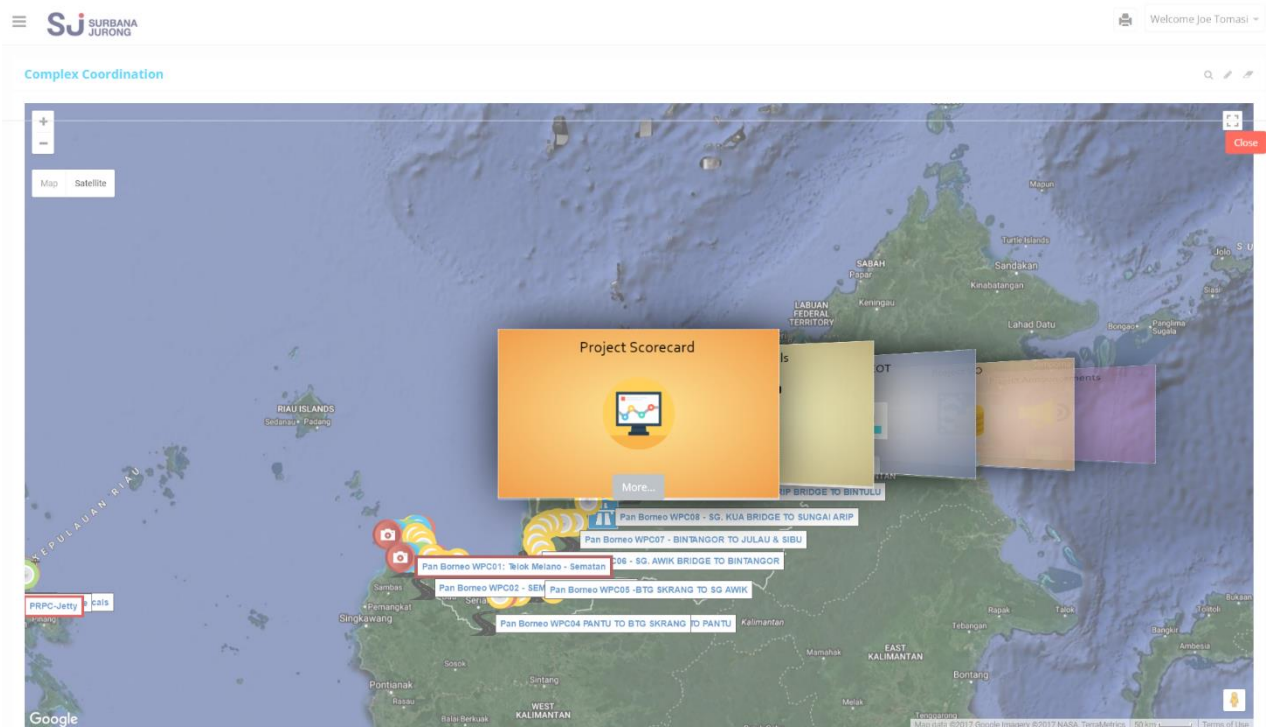
## SAMPLE SCREENS: Project Carousel

When a project icon is clicked, the project carousel will be displayed. The carousel contain a series of cards that users can click on to get more details on the different parts / perspectives of the project.

The carousel cards provide quick views as well as composite data sets on the project profile and performance.

Some of the key datasets accessible from the scorecard include:

1. Project Scorecard
2. Project Details
3. Announcements
4. Extension Of Time
5. Variation Orders

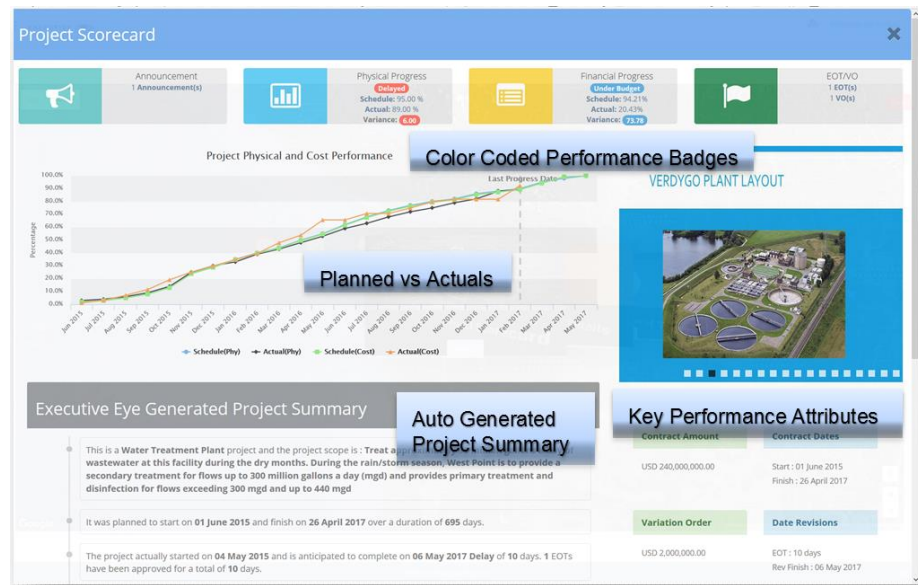




## SAMPLE SCREENS: Project Scorecard

This is the second mode of briefing on a project where a card on the carousel is titled “Project Scorecard”. This is scorecard view displays project content in the form a report card where performance badges for cost and physical progress is calculated and its variance are highlighted. The project s-curve is a combination of both physical and cost s-curves to enable the audience to ascertain the gaps in terms of physical and cost progress.

The scorecards is designed to aggregate data from cost and physical progress and generate narrations that summarize the project progress



in bullet points to cater for stakeholders who sometimes feel overwhelmed by charts and graphs.

Key contract details will be displayed to enable stakeholders to be able to quickly review original dates and amounts and changes such as extension of time and variation orders that have been approved to date.

## SAMPLE SCREENS: Mobile

The mobile version of X-Eye is available in both Android and iOS versions. This is a key application extension as most Executive Stakeholders reach out for their mobile devices to get their latest updates. The mobile versions are native applications that allow users to navigate and interact with the application the same way they with their other mobile applications.

Being a native application, users can also work offline where they can capture content offline and it will automatically upload when internet connection is detected by the application. Similarly, content can be downloaded to the device, allowing user to conduct their briefings without internet connection.

