

# Jeanologia™

*The Science of Finishing*

eData

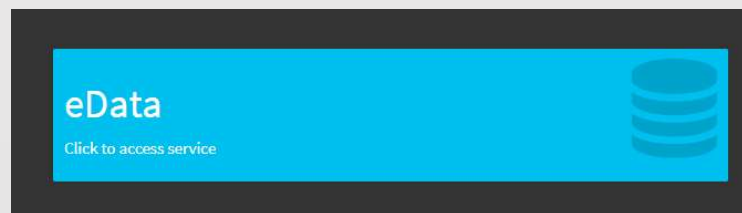
[www.jeanologia.com](http://www.jeanologia.com)

# eData Service

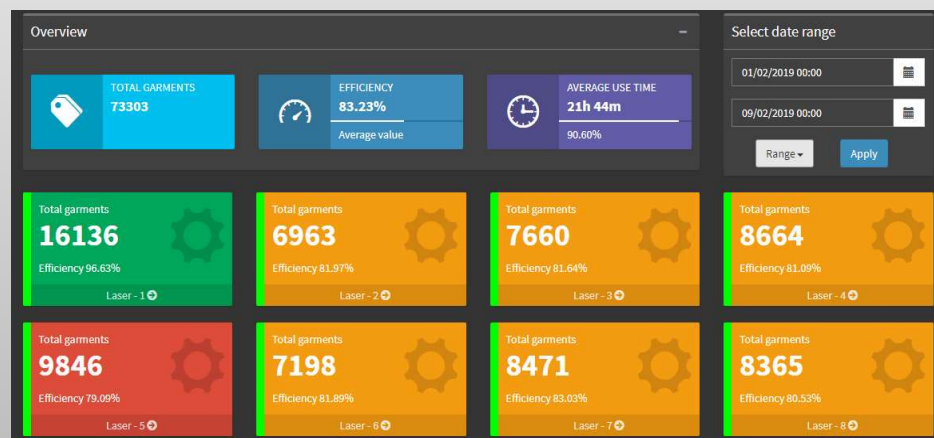
Centralized production layout

Is automatically integrated with eMark

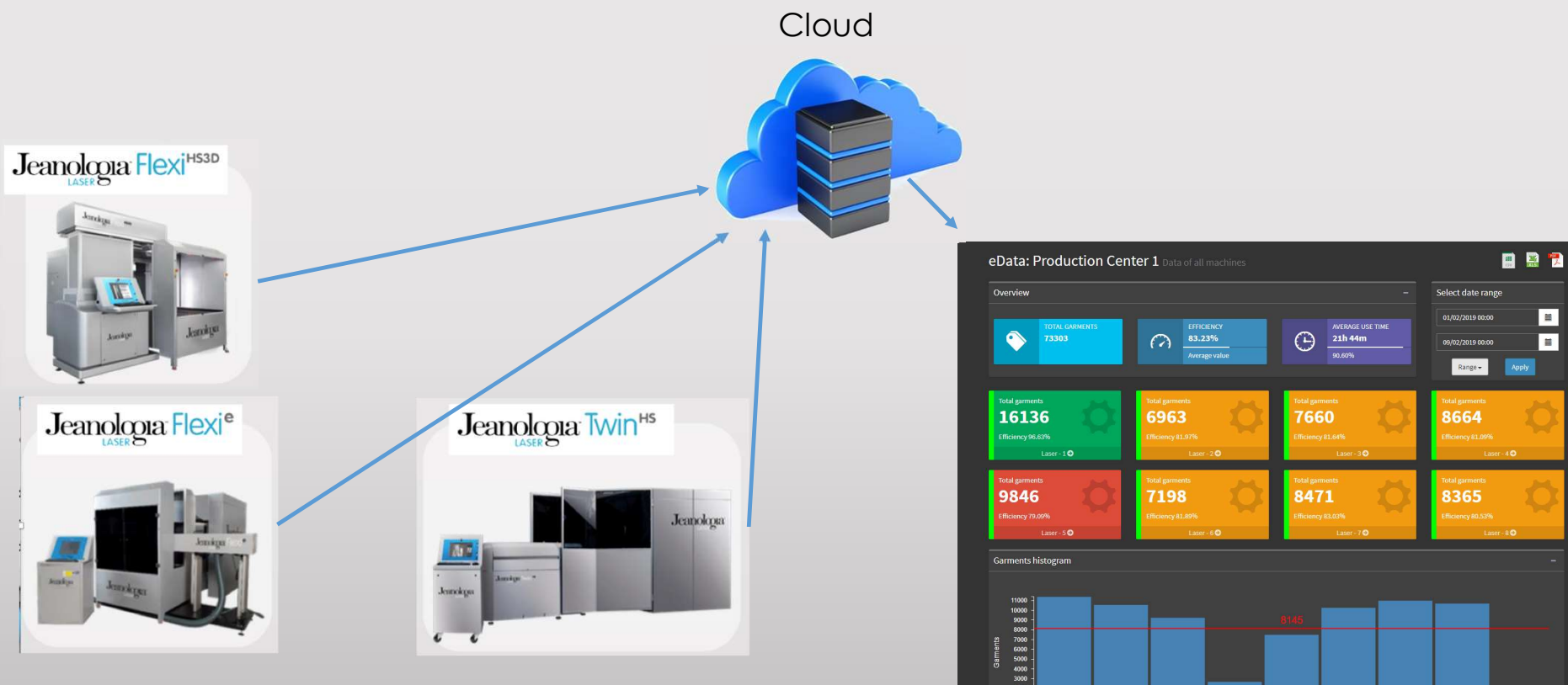
Show global information of production center and detailed information of each single machine.



eData has flexible configuration (language, timezone, default filter)



One view with all Laser Room status



## Main view

Laser Room Cards :  
Laser Room totals.

Machine Card:  
Machine global  
information

Real Time Status.

Summarized garments by day / hour.

Machine status summary

Calculated efficiency



Pdf Report  
Excel Report  
CSV Report

Dates filter panel

Average production time

## Main view – Detail 1

### Laser Room Cards :

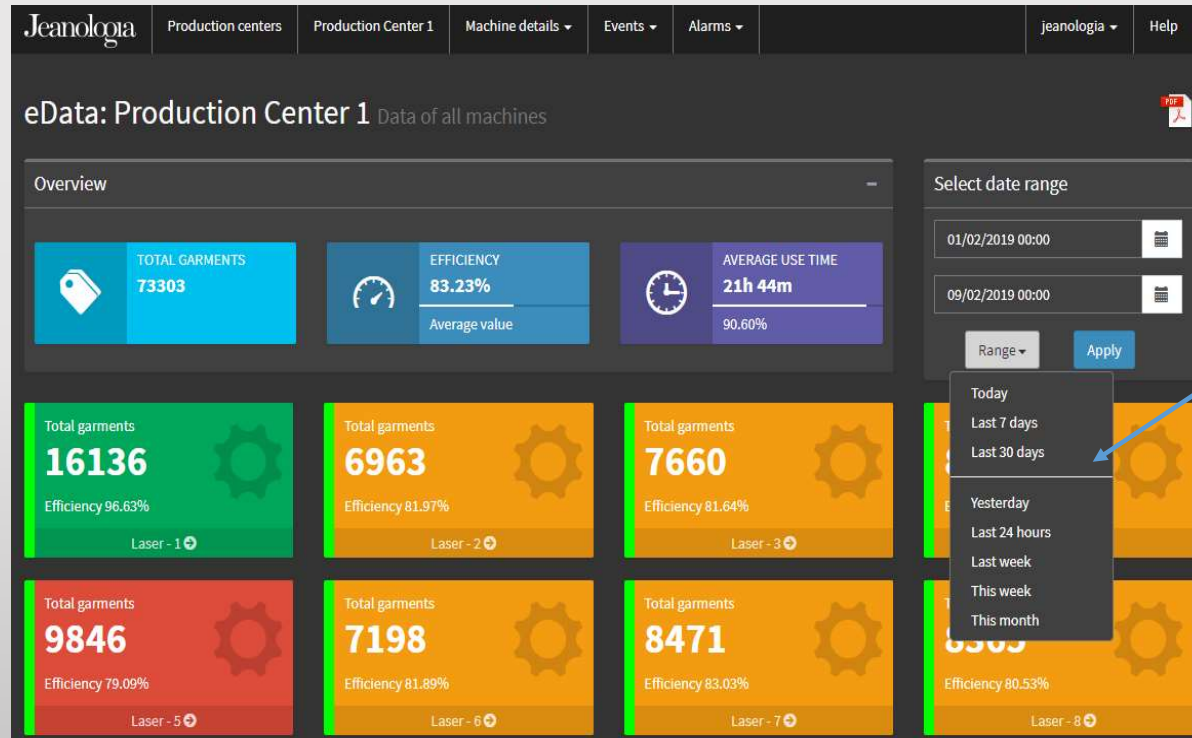
- Total Garment.
- Global efficiency.
- Average production time.

### Machine Card:

- Total Garment..
- Machine Name.
- Back color show machine efficiency:
  - Red : < 25%.
  - Orange : < 75%.
  - Green : > 75%

### Real Time Status:

- Black : Stopped.
- Yellow : On, not marking.
- Green : Marking.
- Red : Alarm. Machine Stop.



Pdf report. Daily report is send to Production manager/CEO email. Same pdf could be downloaded online.

Customized query to find detailed data could be select.

Fast Query selection.

## Main view – Detail 2

### Machine Status Summary:

- Display the global percentage of time of machines being in each status.
- **Black** : Stopped.
- **Yellow** : Machine on, not marking.
- **Dark Green** : Laser waiting operator start to mark.
- **Light Green** : Laser marking

On the attached example is possible to see at 12h:

56% time – lasers marking.

12% time – lasers waiting Operator.

18% time – machines on.

14% time – machines off



### Marking units

summarized by hour or day depending on the selection range.

If selection range < 48 hours, detail is summarized by hours.

If selection range > 48 hours, detail is summarized by day.

## Main view – Detail 3

### Global efficiency for all machines.

Display percentage of laser efficiency calculated as marking time over time machine on.

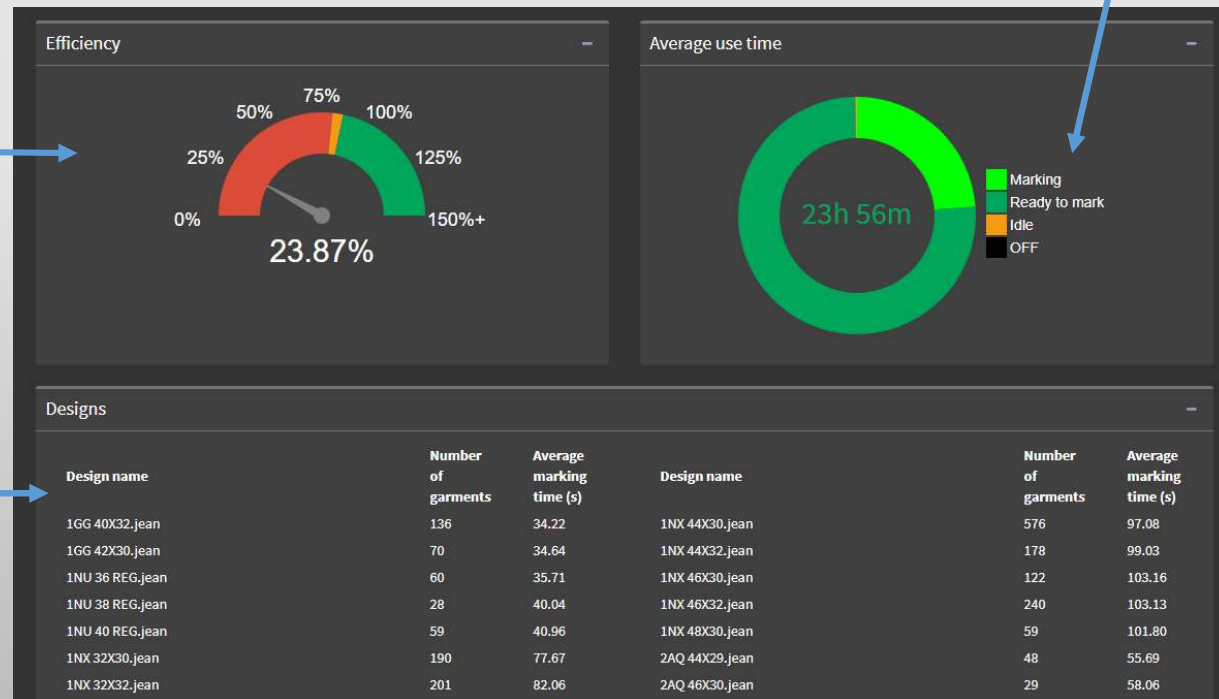
In color means Light Green over sum of Yellow, Dark Green and Light Green.

Machine off status is not considered for efficiency calculation.

**Red:** Efficiency < 25%

**Yellow:** 25% < Efficiency < 75%

**Green:** Efficiency > 75%



### List of marked designs.

To control detailed production on machine.

## Machine view

Machine view show same information displayed on main view taking in consideration only detailed data for selected machine.

Global information

Marking Units

Status summary.

Average Efficiency.

Timeline State Bar.



Generate Pdf, excel and csv with detailed information for selected machine.

Average production time



## Machine view – Time Line Detail

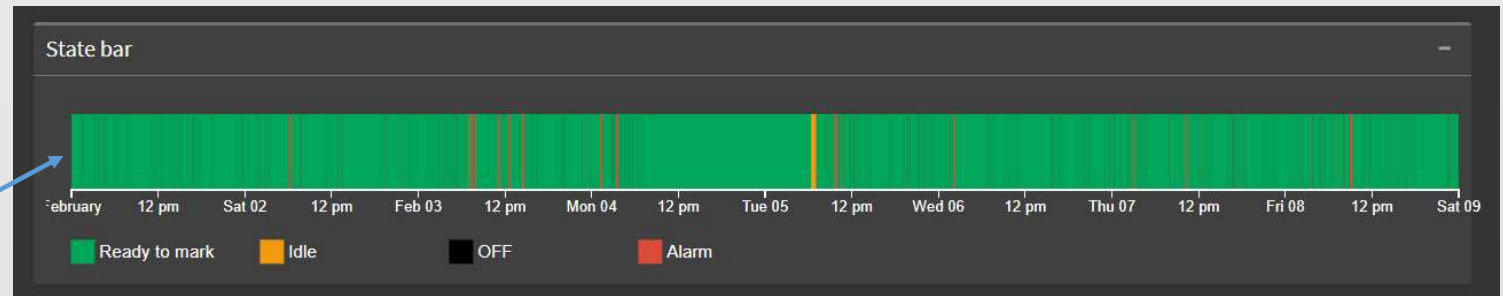
Time Line Detail display  
in status bar all different  
states of machine.

Is useful to analyze all  
different states of the  
machine along  
production date

It also show when  
different status happen  
during production day.

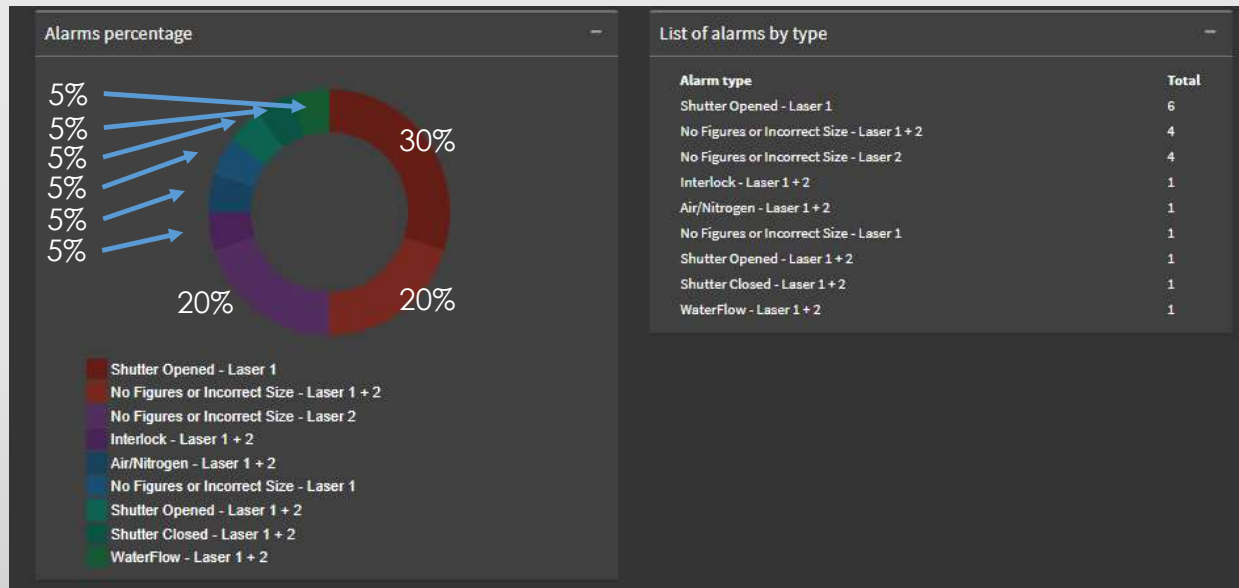
In the first case it is  
possible to see that the  
machine is marking most  
of the time.

Second example show multiple  
alarms on production day. Technical  
revision is required.



## Machine Alarms view

Shows the percentages of the alarms that have occurred



Shows a list with all the alarms generated in a certain time

## Machine Alarms view - upgrade

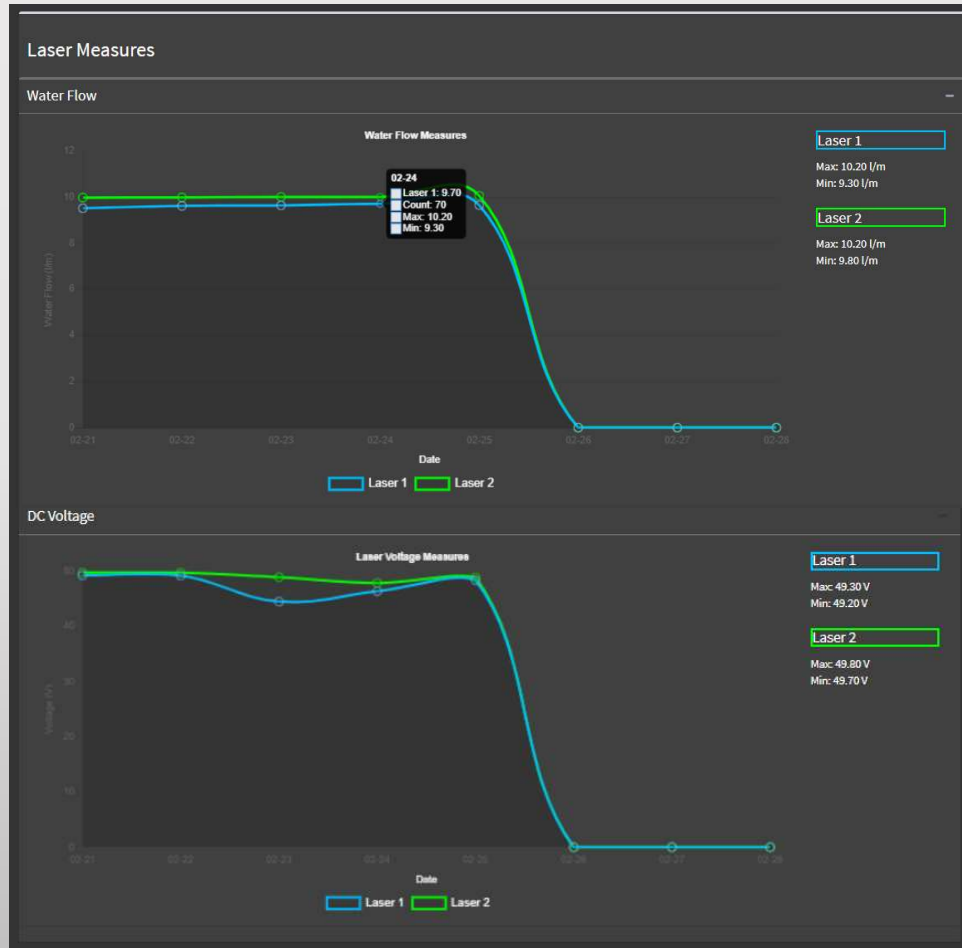
### Laser Measures

- Water Flow
- DC Voltage

Shows an average of the laser measures of the machine (sent from the emark) per day or per hour, according to the date range placed.

Number of readings that occurred on that same day / hour

Max and Min value in the same day /hour



Shows the Max / Min of both lasers in that period of time

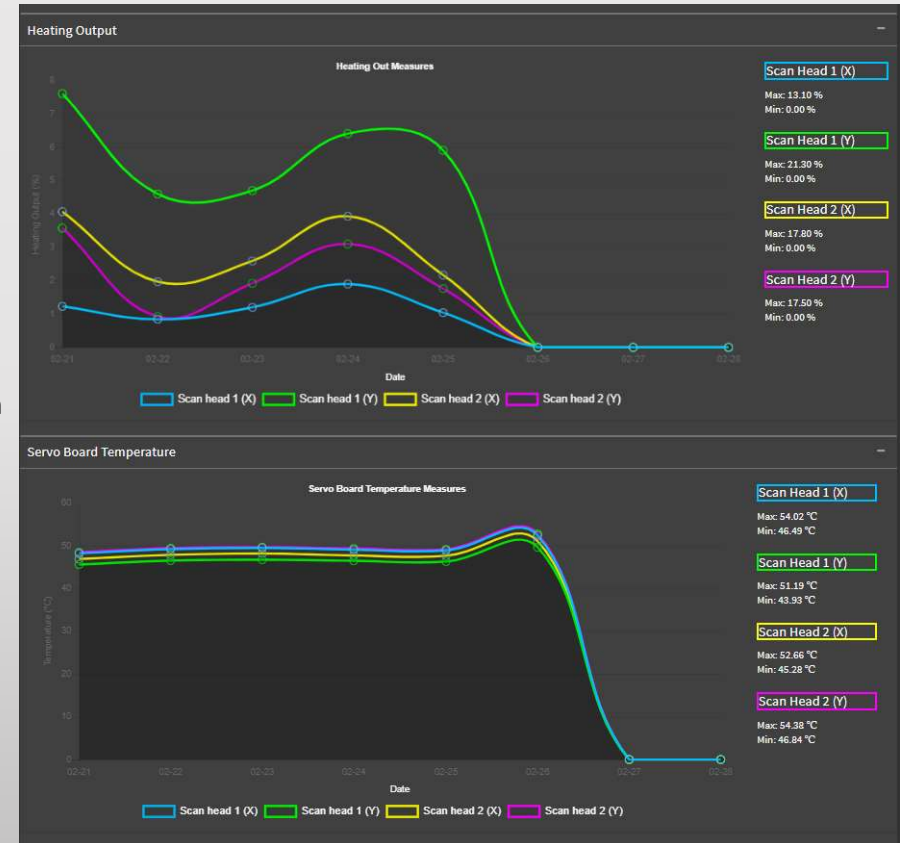
## Machine Alarms view - upgrade

### Scan head Measures

Shows an average of the scan head measures of the machine (sent from the emark) per day or per hour, according to the date range placed.



Shows the Max / Min of both lasers in that period of time



# Jeanologia™

*The Science of Finishing*

Thank you!

[www.jeanologia.com](http://www.jeanologia.com)