

Windows Server: Vital Signs Part 2

WorkshopPLUS

Duration: 3 Days | **Focus Area:** Operations and Monitoring | **Level:** 300

The WorkshopPLUS is a continuation of concepts from the Windows Server: Vital Signs - Part 1 course. It provides attendees with a deeper understanding how to analyze and troubleshoot the overall health of the Windows Server. After successfully completing this workshop, participants will understand how to use troubleshoot and analyze environments running at least Windows Server 2012 R2 or Windows 7.

Technical Highlights

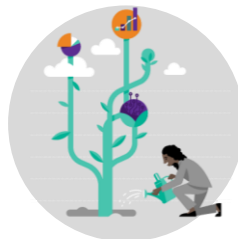
- Use the key counters to analyze the most common performance issues.
- Apply concepts learned in the class to real-world scenarios.

◆ OUTCOMES ◆



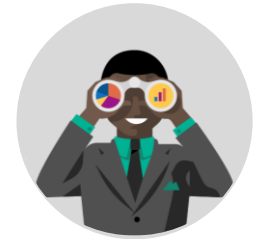
Skills

Gain deep insights to Windows troubleshooting tools, learn how to analyze issues.



Best Practices

Learn how the built-in and other tools work and when to use them.



Way Forward

Take what you've learned in the classroom and apply it to your day to day business.

◆ PREREQUISITES ◆

Participants must have taken the Vital Signs Part 1 training to participate in this training.



Recommended Qualifications

- Have a good understanding of Windows Client and Windows Server operating systems and on their hardware components.



Hardware Requirements

- An Intel Core-i5-based PC
- 4 GB RAM
- 128 GB HDD
- Windows 7 SP1 or later
- Internet access with at least 1 Mbps bandwidth per student

AGENDA

Duration: 3 days

START

DAY 1

DAY 2

DAY 3

End

- Overview
- Windows
Performance Toolkit

- Processor
- Memory

- Storage
- Drivers

SYLLABUS

Overview

- Event Tracing for Windows
- Operating System Architecture Overview
- Call Stacks and Tracing

Windows Performance Toolkit

- WPT Installation
- Windows Performance Recorder - GUI
- Windows Performance Recorder – Command Line Interface
- Windows Performance Analyzer
 - Overview
 - Symbols
 - Activity
 - Providers, Sessions, Profiles and Actions

Processor

- Processor Analysis
- User Mode
- Kernel Mode
- DPC and ISR

Memory

- User Mode
- Virtual Memory
- Heap Usage
- User Mode handle
- Handle Leaks
- Kernel Mode
- Kernel Pool Memory
- Resident Set (optional)

Storage

- Storage Stack
- Storage Analysis
- Capturing Storage I/O metrics
- Storage Graph Views

Drivers

- Driver and I/O request packets
- Driver analysis in WPA
- Miniport filter driver
 - Collection
 - Analysis

NEXT STEPS: If you are interested in a WorkshopPLUS for your organization, contact your Microsoft Account Representative.