

# WorkshopPLUS - Data AI: Reporting Services and Power BI Report Server

## WorkshopPLUS

**Duration:** 3 Days | **Focus Area:** Operations and Monitoring | **Difficulty:** Level 300

This course will provide you the knowledge and tools necessary to understand the capabilities and usage of SQL Server Reporting Services and the Power BI Report Server. It will help you get familiar report design concepts and skills needed to develop Reporting Services Paginated, Mobile, and Power BI Reports.

This workshop is targeted at Report Designers, Analysts, Business Analytics Developers, and Data Engineers.

### ♦ OUTCOMES ♦

## 01 SKILLS

Gain a deeper understanding of creating, deploying, and managing reports for your organization, as well as programming features to extend and customize reporting functionality.

## 02 BEST PRACTICES

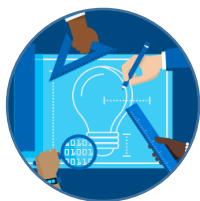
Experience on how to create modern-looking reports with updated tools and new features, how to move to the cloud and new mobile reports.

## 03 WAY FORWARD

Recommendations and guidance on how to apply the knowledge acquired to resolve real problems at the workplace

### ♦ CAPABILITIES ♦

Hands-on, interactive learning with expert instructors in a classroom environment.



### OUR EXPERTISE

Learn from industry experts that help enterprise customers solve their most challenging problems.



### HANDS ON

Practice the concepts you learned in the classroom by engaging in hours of hands-on lab exercises.

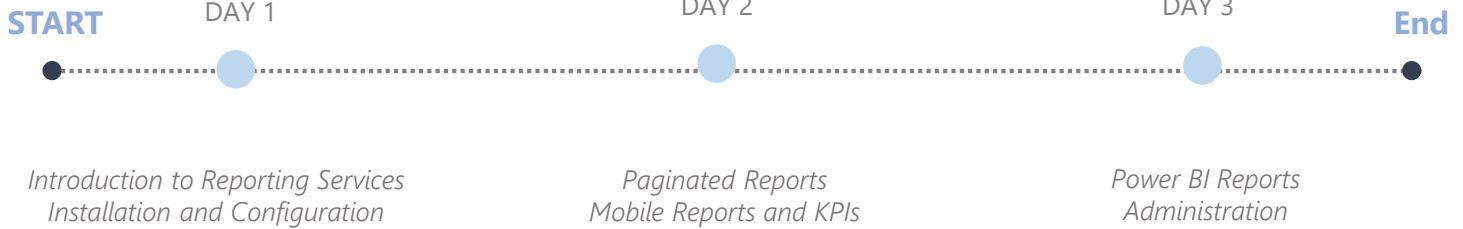


### IN-DEPTH LEARNING

Deep technical training that equips you to overcome challenging problems in the real world.

## AGENDA

Duration: 3 days



## STATS

**1000+**  
**COURSES  
COMPLETED**

**95%**  
**CUSTOMER  
SATISFACTION**



**AVAILABLE  
WORLDWIDE**

## ADDITIONAL DETAILS

### Objectives

After attending this Workshop, students will be able to:

- Understand the types of reports and tools available in Reporting Services
- Learn how to installation and configure SSRS
- How to scale-out SSRS deployment
- Understand Power BI report development
- Understand key performance indicators (KPIs)
- Learn how to manage subscription
- Learn how to schedule reports

### Prerequisites

Before attending this workshop, it is highly recommended that you meet the following criteria:

- Understanding of the fundamentals of T-SQL.
- Some basic knowledge of the Microsoft Azure platform.

**NEXT STEPS:** If you are interested in a visualization with Reporting Services for your organization, contact your Microsoft Account Representative.