

Surface Pro

Exceptional power & performance

Ultimate versatility

Work from anywhere

Make it yours

Tech specs



Surface Pro

Experience Guide

Sleek, light and beautiful.

Designed by Microsoft, the Surface family of devices are powerful and beautifully engineered with details you can see and feel. Surface adapts to how you work and play.



Surface Pro

LTE connectivity

New Surface Pen and Arc Mouse, plus on-screen Surface Dial support for intuitive interactions

Updated design that's lighter and altogether more beautiful

Hardware accelerated inking for a natural pen-on-paper feeling

50% more battery life than Surface Pro 4

20% more performance than Surface Pro 4

Skype for Business and superior sound for crystal-clear conversations

The best of Microsoft security, familiarity and harmony with your existing IT

Next-generation hinge enables studio mode for an immersive ideation experience

Our most responsive Type Cover yet, available in rich shades of luxurious Alcantara® fabric

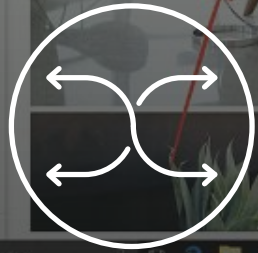


Ultra-light and versatile



Highest performance

Designed to run professional-grade software and power through the workday.



Most versatile

Adapts to the way employees work, giving them freedom to create their best.



Beautifully designed

Premium materials deliver the perfect balance of power and portability.



Best of Microsoft

Protect business data with enterprise-grade security and take advantage of familiar tools to create without limits.

Getting started

We highly recommend evaluating Surface devices, the hardware design, specs, and software features in everyday productivity scenarios.

This evaluation guide only contains a few scenarios. We encourage you to come up with more that are relevant to you. Please review each device against the experience scenario, and rank them using the scale below. Please feel free to define your own system that accounts for importance with the resultant weightage:

0

Does not meet
expectations



1

Satisfactory
experience



2

Empowering
experience



A photograph of two women in a modern office setting. They are seated at a white desk, looking at a tablet displaying charts. One woman is pointing at the screen. On the desk are a blue mug, a keyboard, and a mouse. In the background, there are two large monitors and a window with a grid pattern. The overall tone is professional and collaborative.

Exceptional power & performance

Empower your employees to feel free to be their most creative and productive from anywhere, without having to compromise on performance.

Exceptional power & performance

Experience Scenario	Surface	Device #2
If you're testing an i5 configuration, note how silent it is - even hours into your workday. The thermal module in the latest Pro was upgraded to deliver better cooling performance, allowing the m3 and i5 configuration to be completely fan-less.		
Take a headset free video call with Skype. Ask your colleagues or friends how well they can see and hear you, from various distances and directions. Take note of how well you can hear them from those same distances and directions.		
When returning to your Surface Pro after lunch, notice how quickly it "wakes up". 'Instant-On' means you can get up and running quickly, capturing and iterating on your ideas wherever you are without having to wait.		
TOTAL SCORE		



Ultimate versatility

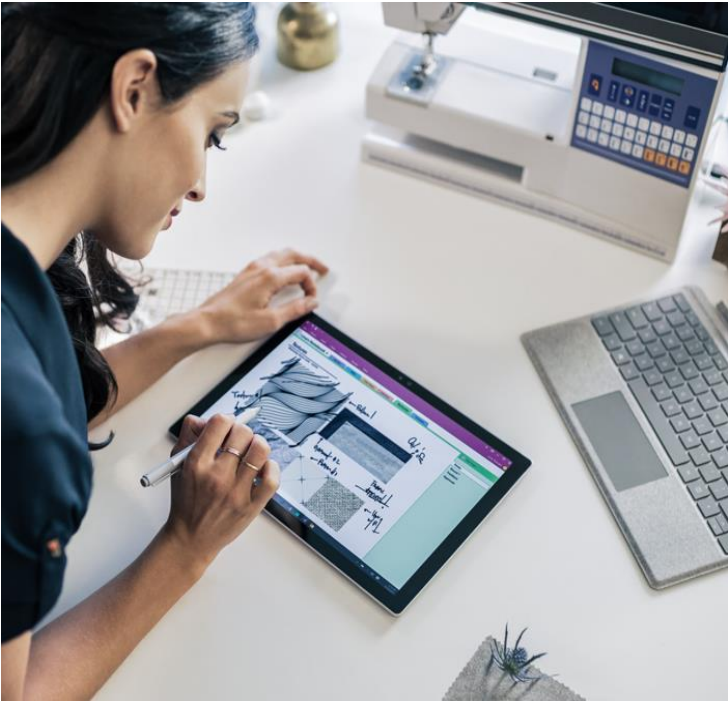
Streamline the ideation and creativity process by giving people the versatility they need to work on anything, from anywhere.



Ultimate versatility

Experience Scenario	Surface	Device #2
Try detaching and re-attaching the type cover. Fold the trackpad side of the type cover over your device screen when putting your device in your bag. When using the Surface Pro in tablet mode, fold the type cover back around so that the back of the Type Cover is touching the back of the Surface Pro screen. Fold the type cover back, flip it around and take it off – you decide.		
Pick up the Surface Pro so that the screen is facing you, then rotate it 45 degrees while the screen is still facing you. Notice how the contents on the screen are reconfigured to match the screen’s orientation.		
Use the versatile kickstand to comfortably adjust the Surface Pro so that the screen is oriented at a position that is most comfortable for you. Try this out by using the Surface Pro on your desk, then on your lap. The hinge on the Surface Pro has been made even better by completely redesigning the architecture to deliver a 165-degree angle.		
Connect the Surface Dock to your device. The Surface Dock has four USB 3.0 ports, two Mini DisplayPorts, audio out port, and Gigabit Ethernet port that make multi-tasking easy.		

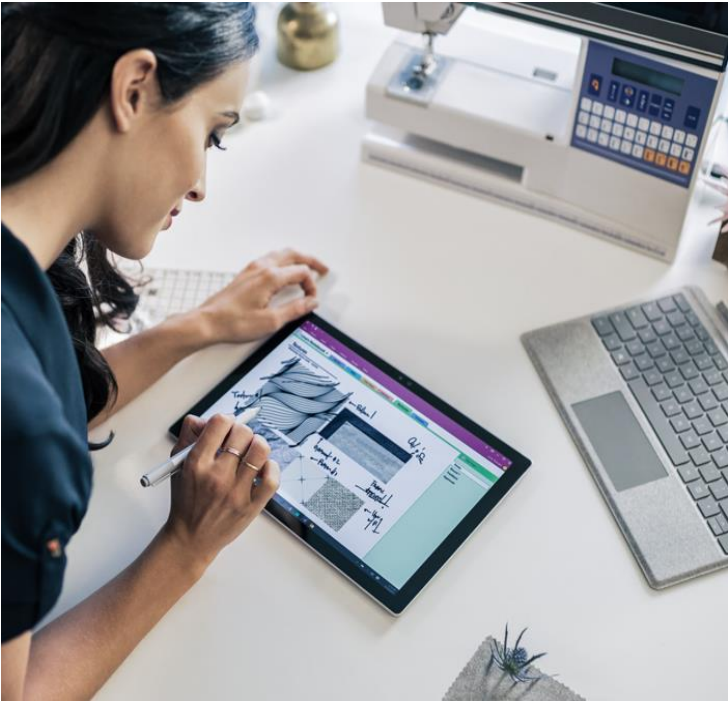
continued on next page...



Ultimate versatility *(cont'd)*

Experience Scenario	Surface	Device #2
If you can think it, ink it! Use the Surface Pen with OneNote to replace your paper notebook or mark an Office file up instead of having to insert comments. Also, sign PDF documents with ease without having to run to the printer. Notice how naturally the ink flows out of the Surface Pen per its near-zero latency. Even the eraser on the Surface Pen can be used to erase your creations.		
Open the Edge browser and enjoy the crisp fonts and smooth zoom, pan and scroll experience. Our browsers treat touch as a first-class input mechanism because it's the best way to enjoy the web.		
Grab a screen cap (shortcut: double pen-click*), mark it up and save/share it. Get your thoughts down quickly with handwritten, digital sticky notes (shortcut: pen-click and hold*).		
Open a document up that you need to review and mark it up (or sign!) with the pen. Be sure to use the touch screen for flicking through pages, panning, and zooming to enable natural document review.		
TOTAL SCORE		

* Surface Pen shortcuts are customizable in *Bluetooth and other devices* settings





Uncompromising mobility

Having a single, connected, core device means you can run efficient, digital-first workflows that are vital for a modern business.

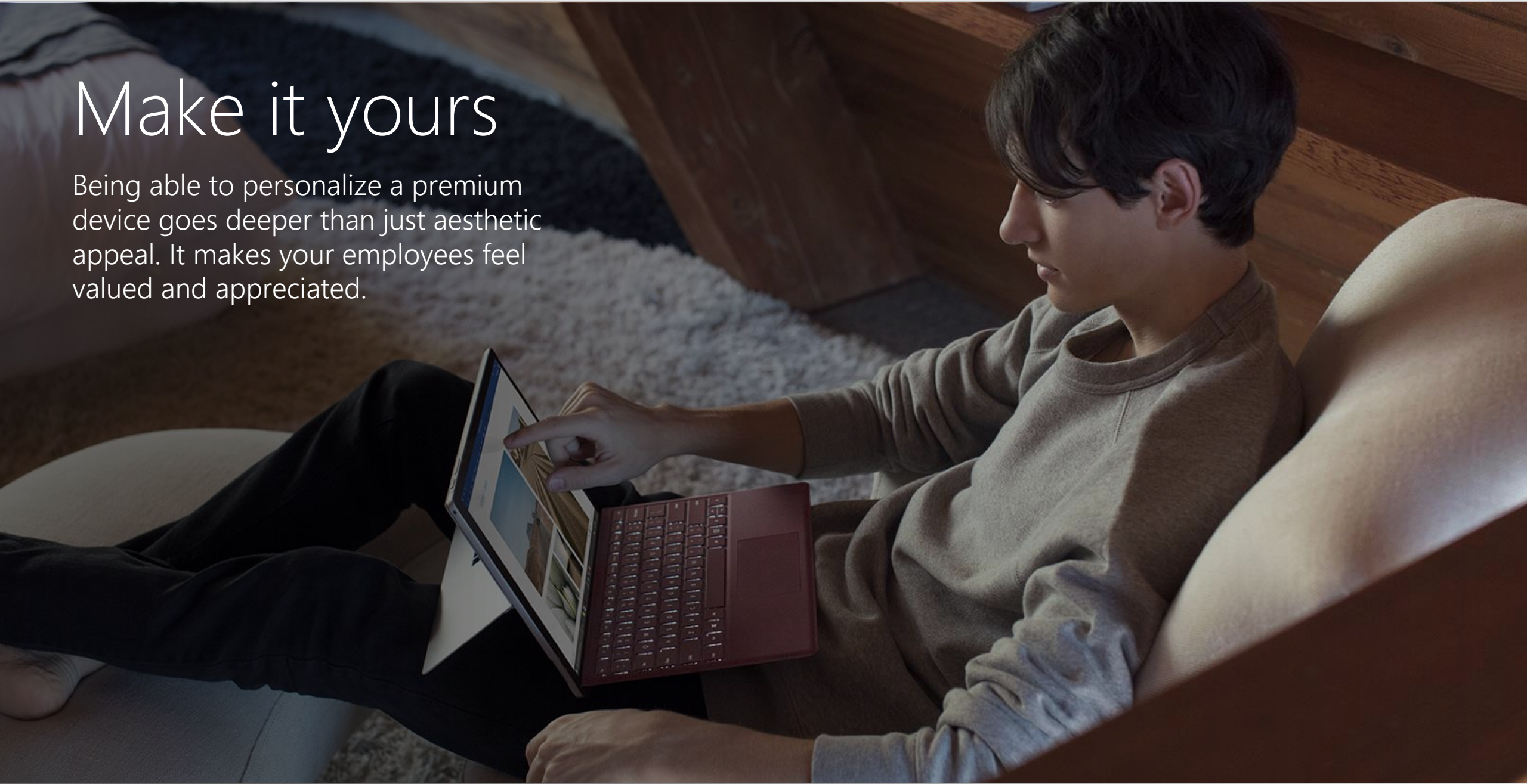
Work from anywhere

Experience Scenario	Surface	Device #2
Stay productive for hours straight- in any light- without plugging in. Notice your device's power battery while working on the go and see how it measures up.		
Take your Surface Pro home with you or- better yet- on a business trip. You can comfortably work from anywhere – traveling in a car or on a plane, waiting at the airport or in your client's lobby. Notice how insignificant it feels from a weight perspective and how your shoulder isn't sore after walking through the airport with it. The device weighs a mere 1.7 pounds.		
While presenting wirelessly with Miracast, detach the keyboard, use the kickstand to get a grip on the device, roam the room while advancing slides. Help the audience understand by using the pen to mark up the presentation as you go (much more effective than laser pointers). If you're using an app that doesn't support ink, double-click the pen, and leverage the screenshot feature to draw all over it.		
If using the Surface Pro with LTE Advanced, insert a sim card (in slot underneath the kickstand) and connect from anywhere to take Skype calls, browse the web and get productive with email. Surface Pro does not compromise battery life with lightning fast, LTE connectivity.		
TOTAL SCORE		



Make it yours

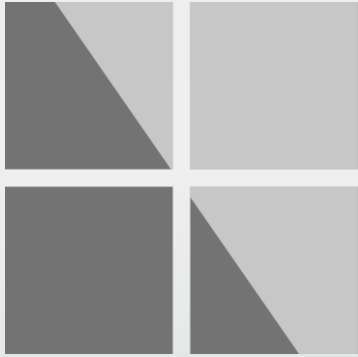
Being able to personalize a premium device goes deeper than just aesthetic appeal. It makes your employees feel valued and appreciated.



Make it yours

Experience Scenario	Surface	Device #2
Make your face your password! Activate Windows Hello by going to Settings > Accounts > Sign-in options. Windows Hello leverages built-in biometric technology to ensure only your face can be used as a substitute to typing in your password.		
Edit your favourite pictures and home videos. Each Surface is individually 100% sRGB calibrated at the factory (a \$200 feature in the display business). Turn the brightness up to 100% and do it all again outside in direct sunlight.		
Turn it way up and listen to your favourite music, while being conscious of the volume and acoustic range. It's unlikely you will hear better speakers in a mobile device. The front-facing speakers deliver a louder and improved listening experience. So, whether you're catching up with a colleague, hosting a virtual presentation for the entire board, or listening to your favourite tunes while you work; you don't need to worry about plugging in a headset or external speaker to get quality sound.		
Give your employees the chance to reflect their own style and make a lasting first impression with a complete range of pens, type covers and mice now available in a variety of colours.		
TOTAL SCORE		





Appendix

Surface Pro - Technical specifications

Dimensions/Weight	11.50" x 7.9" x 0.33" (292mm x 201mm x 8.50mm) m3: 1.69lbs (768g) i5: 1.70lbs (770g) i5 with LTE Advanced: 1.79lbs (812g) i7: 1.73lbs (784g)
Display	Screen: 12.3" PixelSense™ Display Resolution: 2736 x 1824 (267 PPI) Aspect Ratio: 3:2 10 point multi-touch Corning® Gorilla® Glass 4
Memory	4GB/8GB/16GB RAM 1866Mhz LPDDR3
Processor	7th Generation Intel® Core™ m3-7Y30 7th Generation Intel® Core™ i5-7300U 7th Generation Intel® Core™ i7-7660U
Security	TPM 2.0 chip for enterprise security Enterprise-grade protection with Windows Hello face sign-in
Sensors	Ambient light sensor Accelerometer Gyroscope
Wireless	Wi-Fi: IEEE 802.11 a/b/g/n/ac compatible Bluetooth Wireless 4.1 technology

Surface Pro – Technical specifications

Software	Windows 10 Creators Update Microsoft Office 365 30-day trial
External display support	Up to two 4K UHD (@30Hz) or single 4K UHD (@60Hz)
Storage	BGA PCIe NVMe Solid State Drive (SSD) options: 128/256/512GB or 1TB ¹
Graphics	Intel® HD Graphics 615 (m3) Intel® HD Graphics 620 (i5) Intel® Iris™ Plus Graphics 640 (i7)
Connections and expansions	Full-size USB 3.1 Gen 1 microSDXC card reader Surface Connect™ 3.5mm Headphone jack Mini DisplayPort Cover port
Cameras, video, and audio	Windows Hello face authentication camera (front-facing) 5.0MP front-facing camera with 1080p Skype HD video 8.0MP rear-facing autofocus camera with 1080p Full HD video Dual microphones 1.6W Stereo speakers with Dolby® Audio™ Premium
Battery life	Up to 13.5 hours of video playback ² With LTE Advanced: Up to 12.5 hours of video playback ³

¹ System software uses significant storage space. Available storage is subject to change based on system software updates and apps usage. 1 GB=1 billion bytes. See [Surface.com/Storage](https://surface.com/storage) for more details.

² Up to 13.5 hours for video playback. Testing conducted by Microsoft in April 2017 using preproduction Intel Core i5, 256GB, 8GB RAM device. Testing consisted of full battery discharge during video playback. All settings were default except: Wi-Fi was associated with a network and Auto-Brightness disabled. Battery life varies significantly with settings, usage, and other factors.

³ Up to 12.5 hours for video playback. Testing conducted by Microsoft in November 2017 using preproduction Intel Core i5, 256GB, 8 GB RAM LTE device. Testing consisted of full battery discharge during video playback. All settings were default except: LTE enabled and device connected to LTE Network. WiFi and Bluetooth in airplane mode and Auto-Brightness disabled. Battery life varies significantly with settings, usage, and other factors

Surface Pro – Technical specifications

Network (LTE Advanced models)¹	4G LTE Cat 9 modem up to 450Mbps GPS / GLONASS: Standalone and Assisted GNSS, accuracy up to 3 meters Nano SIM Tray and Embedded SIM (eSIM) LTE Advanced (Bands 1, 2, 3, 4, 5, 7, 8, 12, 13, 17, 19, 20, 26, 28, 29, 30, 38, 39, 40, 41)
Warranty	1-year limited hardware warranty
In the box	Surface Pro (Wi-Fi or with LTE Advanced) Power Supply Quick Start Guide Safety and Warranty documents

¹ Service availability and performance subject to service provider’s network. Contact your service provider for details, compatibility, pricing, SIM card, and activation. See all specs and frequencies at [Surface.ca](#).



© 2018 Microsoft

The information herein is for informational purposes only and represents the current view of Microsoft Corporation as of the date of this presentation. Because Microsoft must respond to changing market conditions, it should not be interpreted to be a commitment on the part of Microsoft, and Microsoft cannot guarantee the accuracy of any information provided after the date of this presentation.

Microsoft makes no warranties, express, implied or statutory, as to the information in this presentation.