

Data AI: Business Analytics with Power BI

WorkshopPLUS

Duration: 3 Days | **Focus Area:** Business/IT Alignment | **Level:** 300

It is a three day WorkshopPLUS course that provides attendees with deep knowledge of the latest Microsoft business analyst tool, Power BI Desktop, and also the accompanying cloud service, which allows publishing, consumption and secure sharing of information.

It also helps attendees to understand how to use Power BI Desktop to connect to your operational data sources, transform them to meet your business requirements, produce data models and Develop highly-visual and highly-interactive reports and dashboards.

OUTCOMES



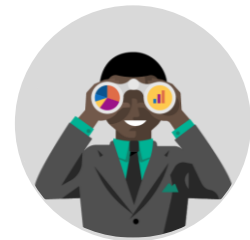
Skills

Gain a deeper understanding of data wrangling, transformation and modeling options available in Power BI, as well as understanding of the several visualization possibilities and their typical real-world applications.



Best Practices

Experience on how to transform and model data, create advanced calculations and build stunning reports, publish your model, build a dashboard.



Way Forward

Recommendations and guidance on how to apply the knowledge acquired to resolve real problems at the workplace.

PREREQUISITES

Participants that have existing experience developing applications will receive the most value from this course.



Recommended Qualifications

Before attending this workshop, it is highly recommended that you meet the following criteria:

- Some familiarity with other data analysis tools such as Excel
- Some familiarity with database modelling and data warehousing concepts
- For the best experience in this workshop, please make sure trainees can access POWERBI.COM and preferably with a PRO license.

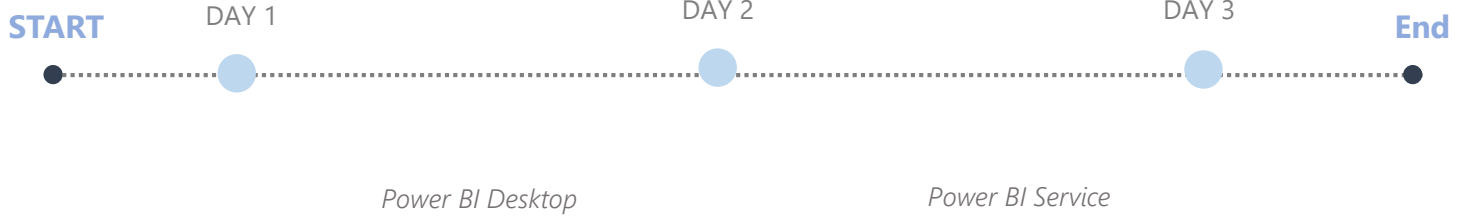


Hardware Requirements

- An Intel Core-i5-based PC
- 4 GB RAM
- 128 GB HDD
- Windows 7 SP1 or later
- Office 2013 Professional Plus
- Internet access with at least 1 Mbps bandwidth per student

AGENDA

Duration: 3 days



SYLLABUS

Module 1: Power BI Desktop

- Introduction
- Connection to Data
- Shaping Data
- Creating a Data Model
- Calculations
- Building a Report
- Sharing

Module 2: Power BI Service

- Get Data
- Pinning and Navigation
- Keeping Data Current
- Q&A and Quick Insights
- Sharing
- Connect From Excel
- Mobile Reports
- Administration, Licensing and Governance
- Data Challenge

NEXT STEPS: If you are interested in analytics and visualization with Power BI for your organization, contact your Microsoft Account Representative.