



Readiness Planning Guide



**Environmental
Readiness**



Compliance



Network Readiness



**Authentication &
Authorization**



Azure Readiness



Office 365 Readiness



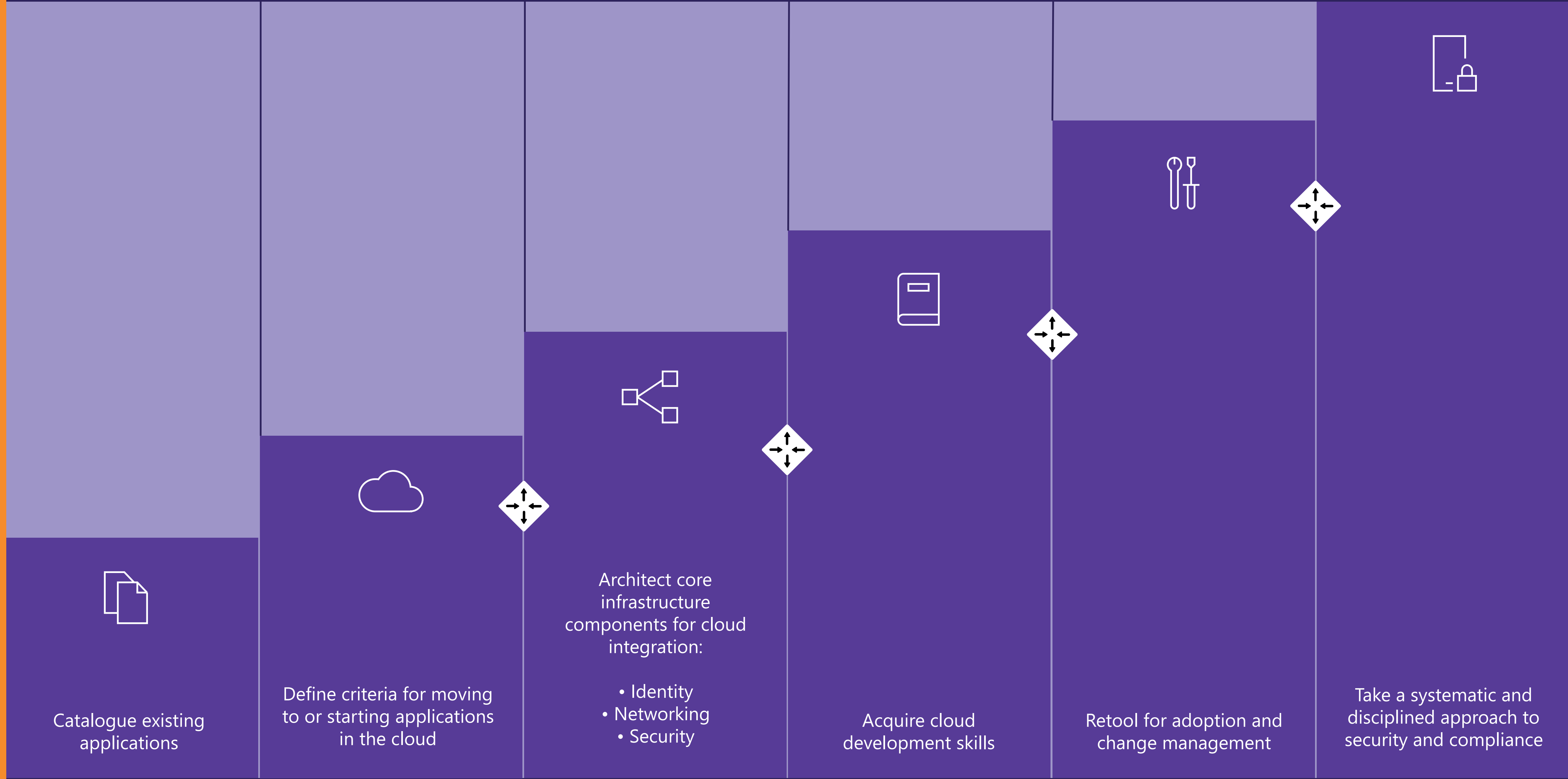
Partner Engagement

Emerging strategies

What we learn from enterprise organisations that are further ahead.



Environmental Readiness

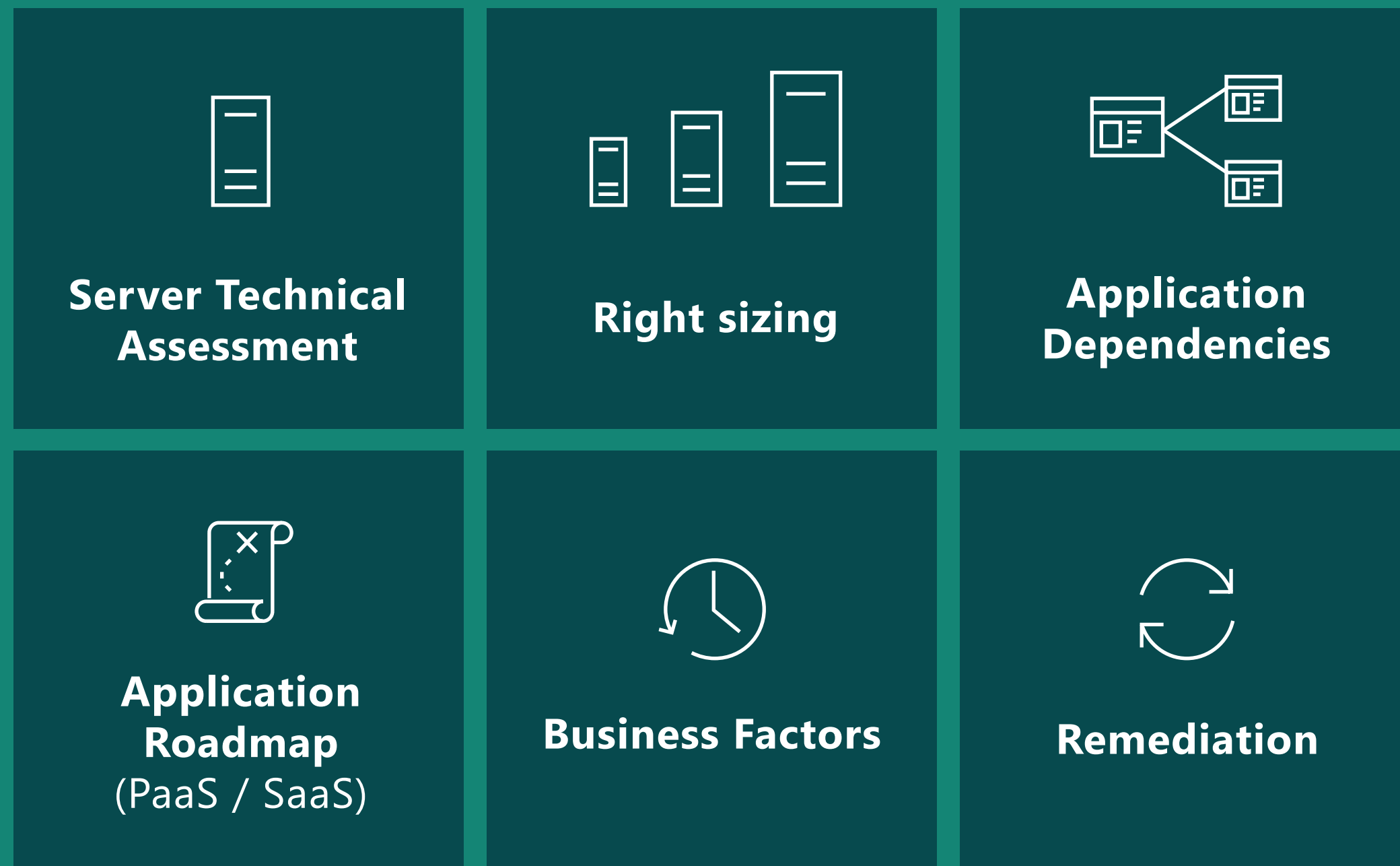


Assessing Applications for IaaS

Application Assessment Framework

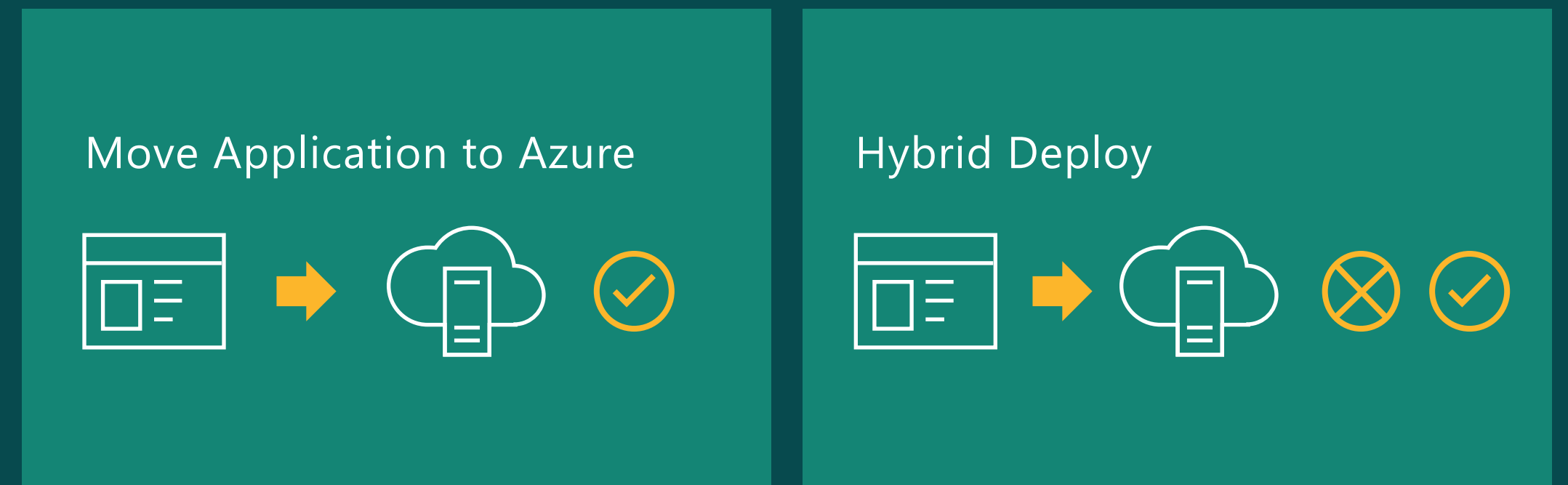
- Identify Technical Blockers
 - Hard Blockers
 - Potential Blockers
- Evaluate Servers Against Blockers
- Remediate Potential Blockers

Application Assessment Application Decision Framework

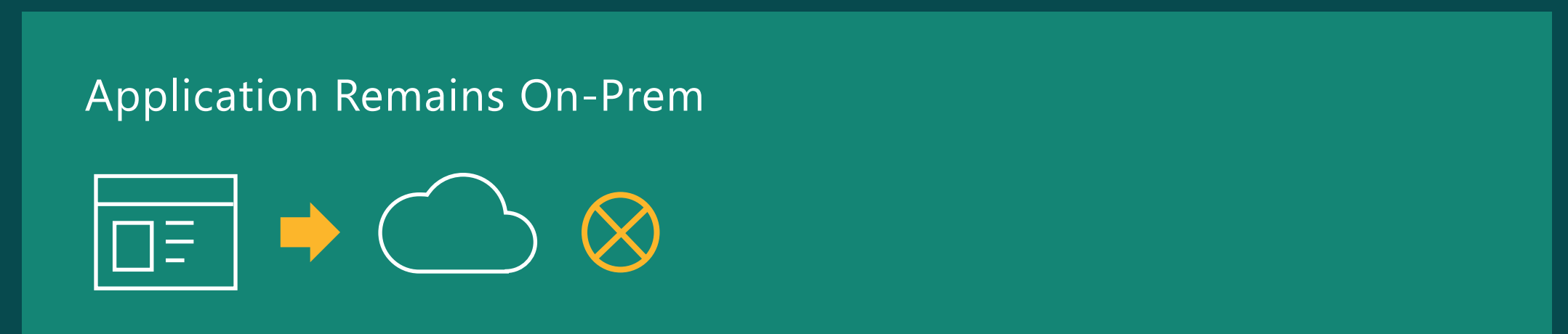


➔ Drives Azure IaaS migration decisions

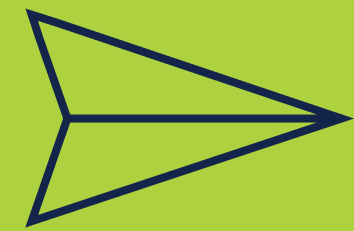
IaaS Migration Roadmap Azure IaaS (Rehost)



On-Prem IaaS (Retain / Retire)



IT Cloud Migration Principles



Go Fast

- Fail fast
- Manage your Plan of Record (POR)



Push the Boundaries

- Architect "net new" for PaaS/SaaS
- Refactor legacy apps for PaaS/SaaS
- Build your POR to enable cloud capabilities
- Think "Experience"



Make Data-Driven Decisions

- Manage your costs
- Use telemetry
- Understand your blockers



Simplify

- Retire, retire, retire
- Aggressively right size
- Review frozen and cold servers weekly
- Clean up CMDB data



Communicate to Succeed

- Communicate customer and stakeholder impacts
- Share learnings and best practices



Cloud IT Skill Evolution and Development

Role Lifecycle



Attract/
Recruit



Interview/
Hire



Onboarding
Process



Learning



Evaluate, Coach,
& Celebrate Success

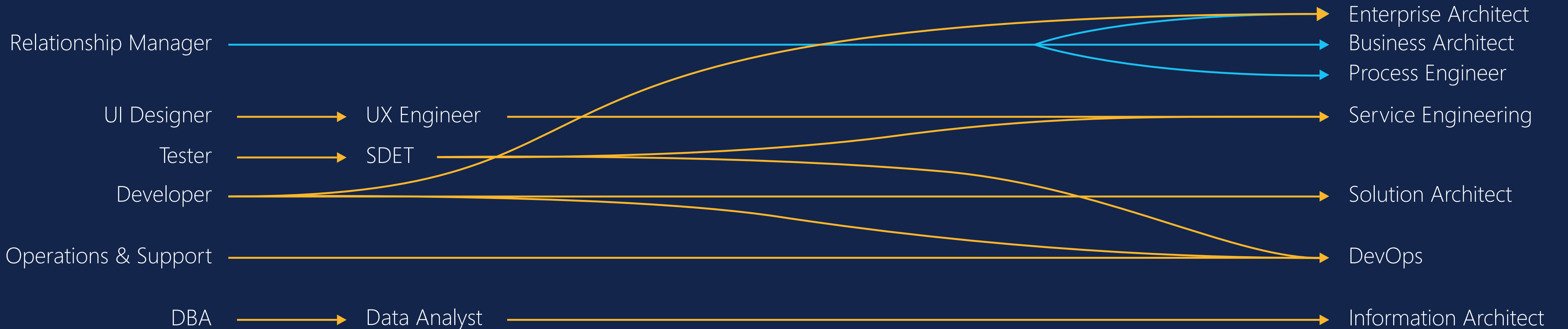


Retain

Role Evolution

Current Skills

Evolve into this Skills



Cloud IT Skill Evolution and Development

Skill Development Roadmap



Environmental Readiness



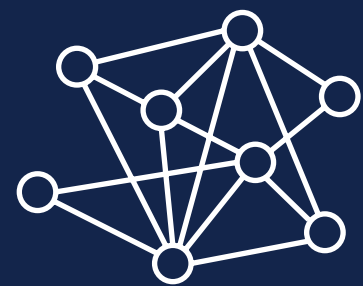
Data Sovereignty



The Data Sovereignty, provisions of PoPI.

Can I lawfully store my data outside South Africa?

We are often asked whether cloud services are in any manner restricted under the data sovereignty provisions of PoPI and consequently whether a customer may store their data outside of South Africa. All too often we hear from customers that PoPI seeks to strictly enforce data sovereignty and prevent offshore data flows.



What is Data Sovereignty?

In its simplest form data sovereignty describes the legal principle that information (generally in electronic form) is regulated or governed by the legal regime of the country in which that data resides. With cloud computing, and specifically the public cloud aspect thereof, data that users generate in most instances resides on servers outside the legal or territorial border of the users' country of residence. This means that the data of an individual becomes subject to a foreign legal regime.



Data Sovereignty

What does PoPI say about Data Sovereignty?

For the purpose of those resident within the borders of the South Africa, what does PoPI say about data sovereignty? Section 72 of PoPI regulates transfers of personal information outside the Republic and therefore broadly determines the issue of “data sovereignty”.

Section 72 of PoPI provides the following (below is a summary of Section 72. For the full version for Section 72, please see end of this article*):
72. (1) A responsible party in the Republic may not transfer personal information about a data subject to a third party who is in a foreign country unless any ONE of the following conditions/considerations exist —

- (a) the third party who is the recipient of the information is subject to a law, binding corporate rules or binding agreement which provide an adequate level of protection that reflect the principles of PoPI
- (b) the data subject consents to the transfer;
- (c) the transfer is necessary for the performance of a contract between the data subject and the responsible party;
- (d) the transfer is necessary for the conclusion or performance of a contract concluded in the interest of the data subject; or
- (e) the transfer is for the benefit of the data subject.

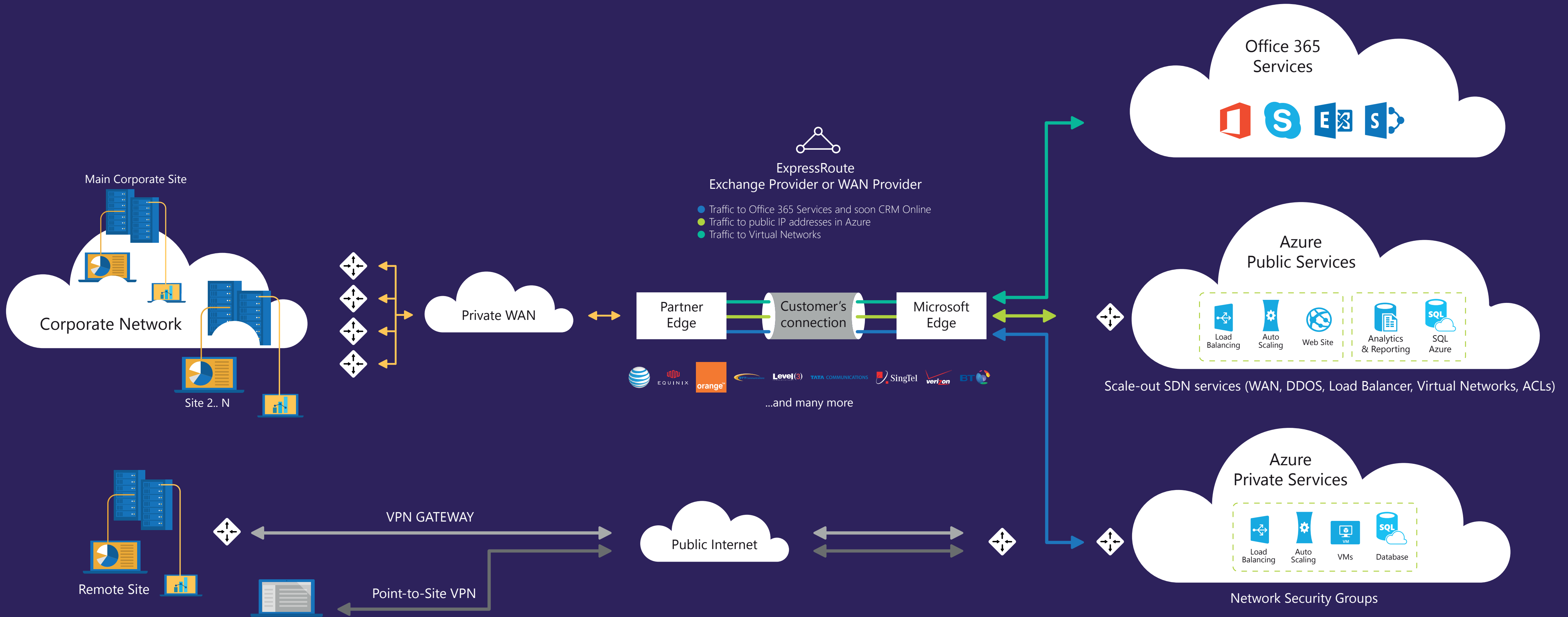
It therefore follows that PoPI does not broadly prohibit the transfer of data outside of South Africa. On the contrary, (i) we find that PoPI narrowly concerns itself only with personal information and (ii) further, and more importantly, regulates HOW personal information may lawfully be transferred internationally. Simply put, section 72 does not prohibit cross-border data flows, rather it acts as an enabler and protector of personal information by providing a set of five (5) conditions (considerations) which a Responsible Party needs to apply and which seek to protect a data subject’s personal information as it moves offshore. Of course, if none of the five (5) conditions are met, a Responsible Party may not transfer a data subject’s personal information outside of South Africa.

 [Assess your GDPR compliance](#)

 [Microsoft TrustCenter](#)



Networking



Backend Connectivity

- ExpressRoute for private enterprise grade connectivity
- VPN Gateways for secure site-to-site connectivity
- Point-to-site for dev/test

Front-End Access

- Dynamic/Reserved Public IP addresses
- Direct VM access, ACLs for security
- Load balancing
- DNS services: hosting, traffic management
- DDoS protection

Native Azure security

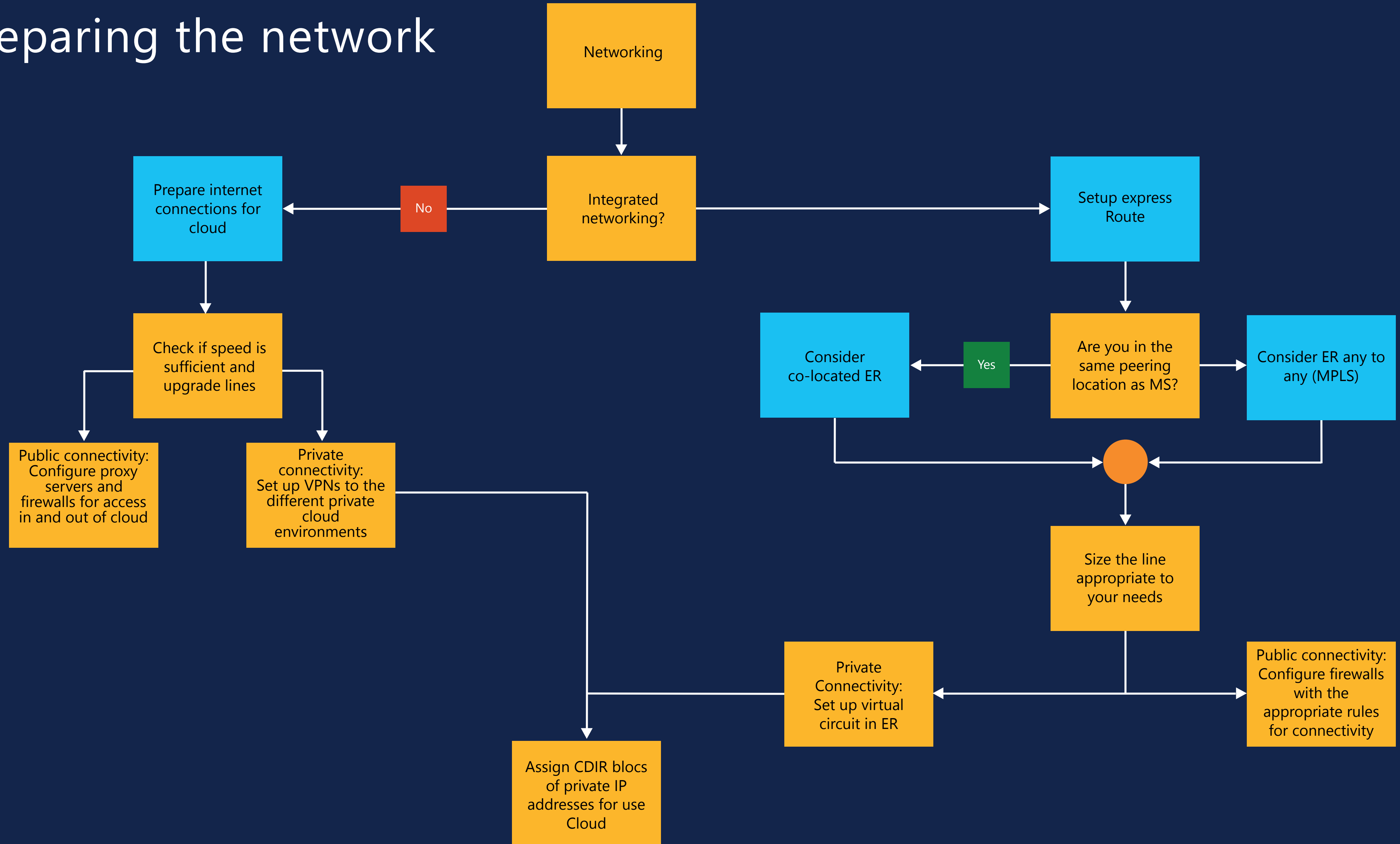
- Network Isolation
- Network Security Groups
- User Defined Routing
- Network Virtual Appliance

Virtual Network

- "Bring Your Own Network"
- Segment with subnets and security groups
- Control traffic flow with User Defined Routes

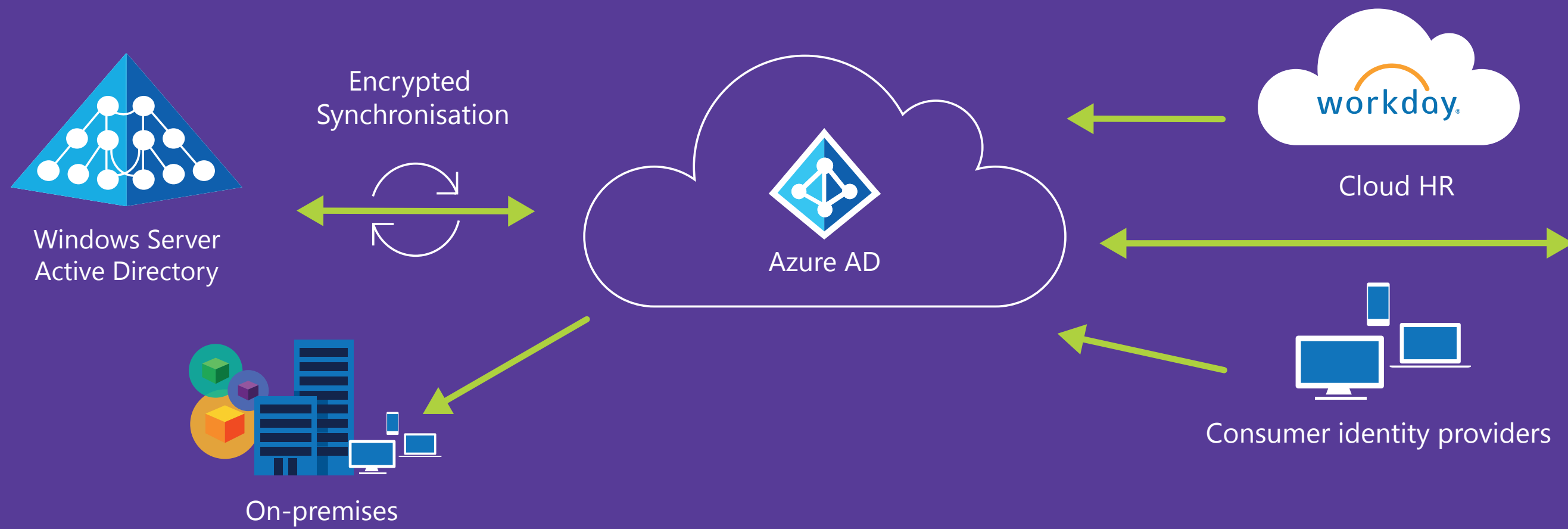


Preparing the network

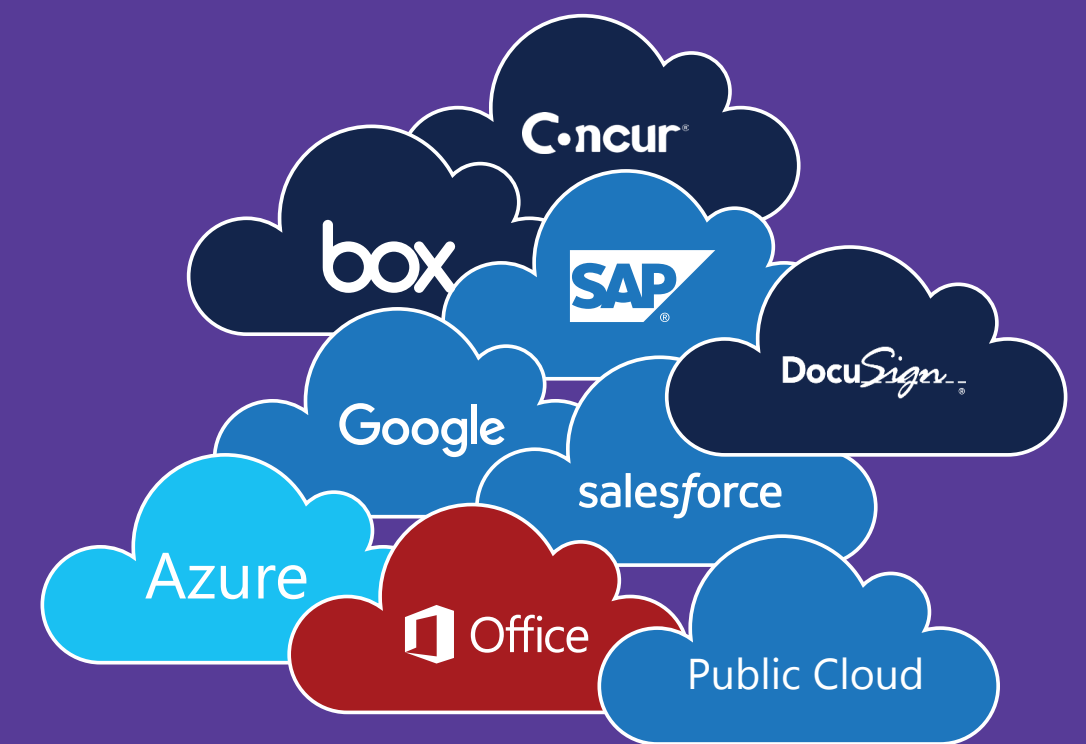


RBAC/Identity & Access Management

Microsoft Azure Active Directory

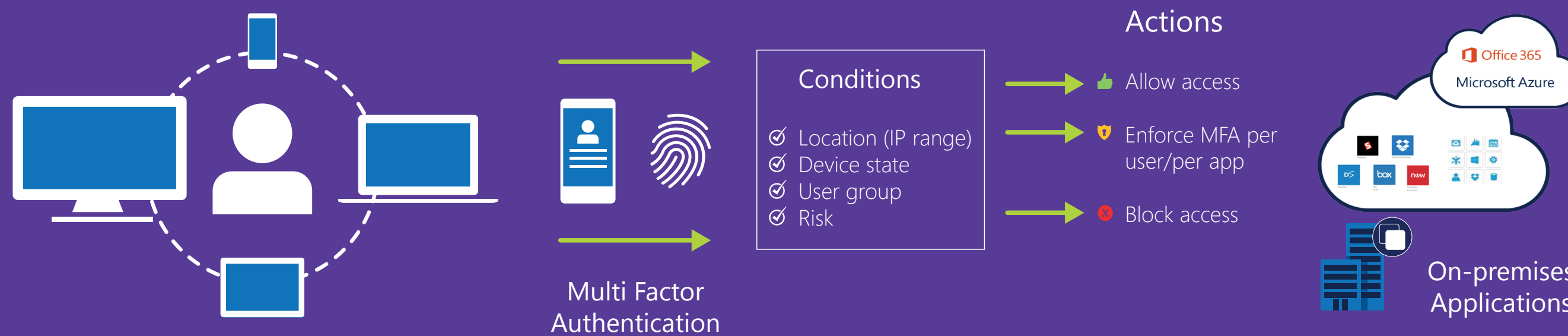


- Standards Bases Integration:
- OAuth2 & OpenID Connect
 - SAML
 - WS-Federation
 - REST based Graph API
 - SCIM
 - FIDO



Public Cloud, Your Apps, 2500+ popular SaaS apps

Identity Driven Security



NOTIFICATIONS, ANALYSIS, REMEDIATION, RISK-BASED POLICIES



CLOUD APP DISCOVERY

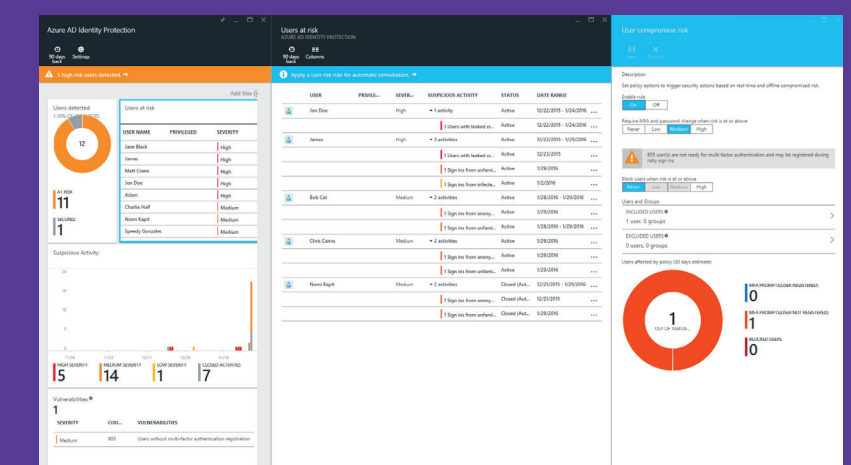


PRIVILEGED IDENTITY MANAGEMENT



Azure Active Directory Identity Protection (PREVIEW)

- Brute force attacks
- Leaked credentials
- Suspicious sign-in activities
- Infected devices
- Configuration vulnerabilities



- Consolidated view to examine suspicious user activities and configuration vulnerabilities
- Remediation recommendations

Things to consider



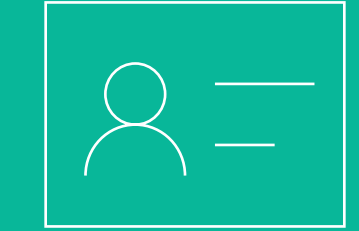
**Synchronise on
Premises
Directory**



**Password Sync
vs Federation**



**Multifactor
Authentication**



**Identity
Managers to
Sync Roles**



**Extend AD -
DCs into Cloud**



**Azure AD
Directory
Services**



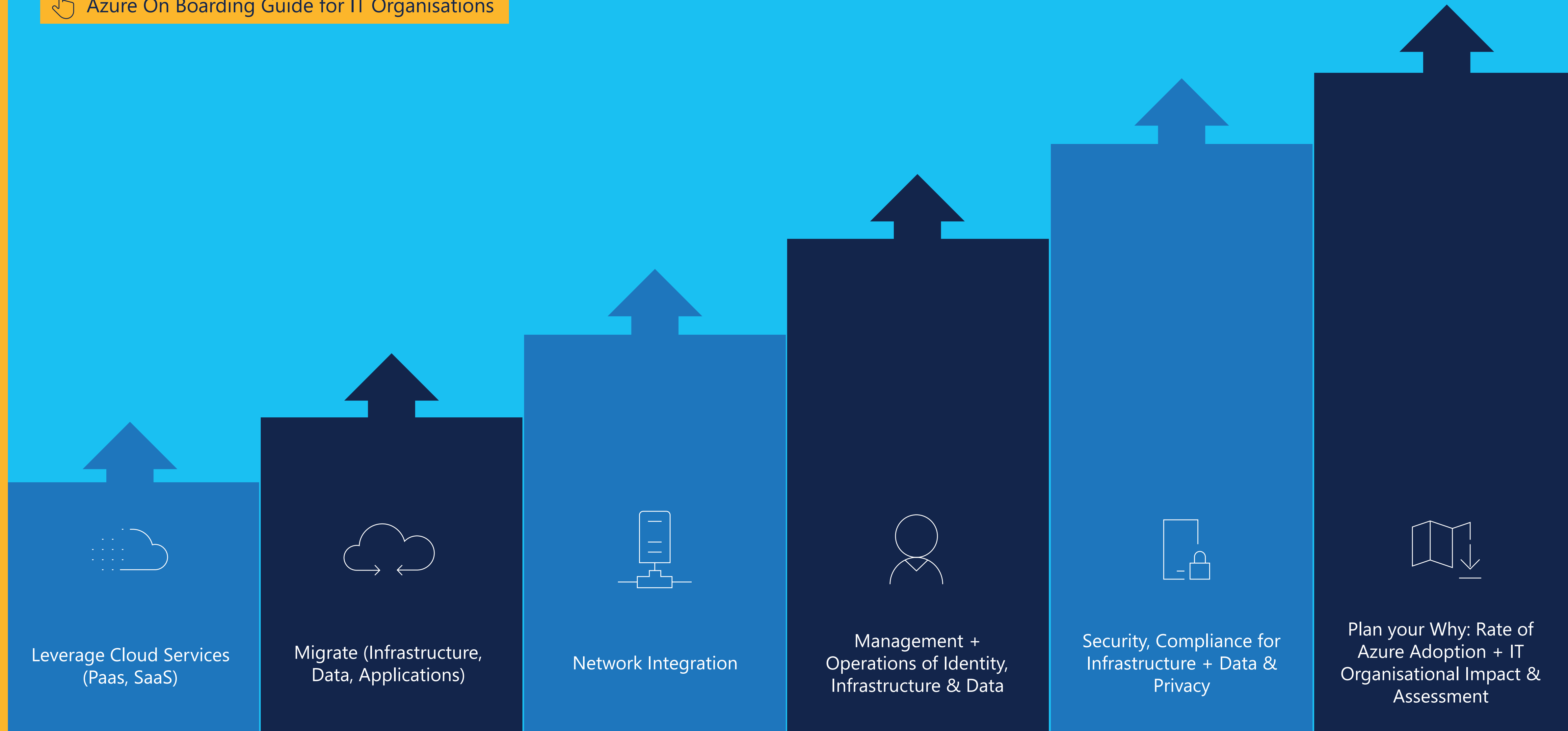
Cloud Roles

Azure Readiness Plan

 [Azure On Boarding Guide for IT Organisations](#)



Azure



Moving to New Office 365 GEO



- In-Geo data residency for core customer data (Exchange mailboxes, SharePoint site content, files within OneDrive)
We introduce no unique capabilities, features or compliance certifications with the new data centre geo
- Data residency not default for existing customers
- Recommendation: customers to take no action!!



101010
010101
101010

Request to move data:

- Request in admin portal within enrolment window (90 days)
- Take up to 24 months
- Back-end service operation
- Adhere to SLA - No service disruption - nothing that customers need to prepare for or to monitor
- All users moved – trial tenant to test

Migrating to Azure with Partners: Customer Questions

- What are the cost savings / TCO if I move to Azure?
- Which applications should I move – and what is the recommended sequence?
- Will you build my entire environment on Azure or can part of it remain on-prem/private cloud?
- Will you take care of architecture changes in order to meet the reliability, scalability, and availability requirements?
- Will you the Partners ensure that my data and processes respect regulatory compliance?
- Show me how you plan to manage and monitor my application in the cloud?
- What are my risks? Where will Microsoft help you?



A simpler approach to migration from Partners



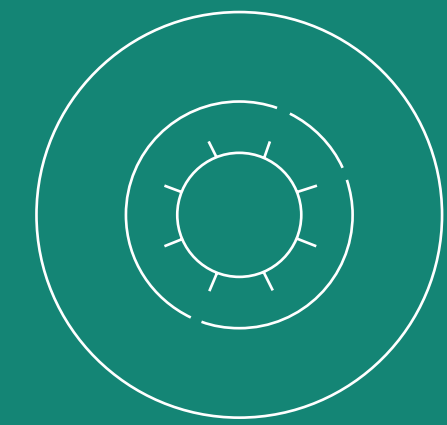
Discover

- Automated workload and data discovery
- TCO and ROI analysis
- Recommendation reports



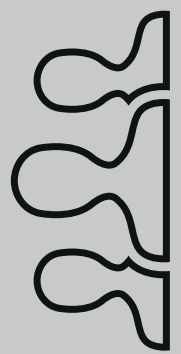
Migrate

- Effortless app, virtual machine, and workload migration to Azure
- Convert existing .NET applications to containers
- Your choice of Azure database destination



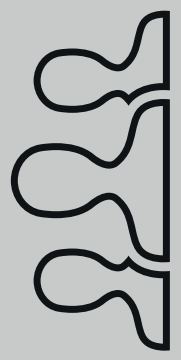
Optimise

- Continual health, performance, and cost management
- Access to advanced features in data services
- Application analysis for optimal PaaS migration



Azure Partner Pathfinder

Programmatic framework delivered by Partners, to help Customers chart their path to Azure



Partner Engagement



Complementary Workshop

Pitch customer value of migrating workloads and apps to Azure

Partner Commitment:

- Partner led workshop
- Identify business/IT needs, priorities and constraints
- Discussion Azure TCO and potential ROI of migration

Microsoft Gives:

- Qualified Leads (Select Partners)
- (Decks, whitepapers, demand gen assets)
- Azure everywhere



Complementary Assessment & POC

Assess environment and generate proposal for modern cloud infrastructure

Partner Commitment:

- Using assessment tools (Cloudamise/Velostrata), identify lift & shift and apps to migrate and those requiring refactoring
- Deliver assessment report, TCO and detailed migration plan
- Business case for customer migration
- Proof of concept if desired

Microsoft Gives:

- Cloudamise licenses to perform assessment. Licences are FREE for more than 20 VMs,
- Proposal Templates
- Azure CSP POC Credit (\$5K per month, up to 2 months)



Co-Fund Migration

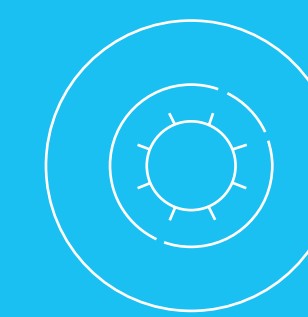
Seamless migration managed by partner

Partner Commitment:

- Partner performs the migration to Azure, and provides managed services thereafter

Microsoft Gives:


- Microsoft Azure migrate tool
- End customer investment funding (10:1 ROI required)
- Technical help desk (CSP only)
- Rich cloud solution provider channel incentives (consumption, customer adds)



Optimisation & Management

Optimise costs, performance and manage services thereafter

Partner Gets:

-  Free Azure cost management

licenses (Cloudyn) for optimisation and provide managed Services

Intelligent Cloud Investments for and through Partners

Intelligent Cloud (IC) Investments

Partner Engagement 

	Envision	Proven Value	Commit	Onboard	Realise Value
<p>Intelligent Cloud Infra/Apps & Data ECIF</p> <p>Funding investment in our customer by utilising Partner and Microsoft Consulting Services (MCS) to help customers drive net new revenue and consumption. Requirements: Recommended 10x ROI; Must drive new Azure Consumed Revenue or new SQL revenue on-premise scenarios & Azure Data Services on consumed revenue.</p>	✓	✓	✓	✓	✓
<p>Safe Passage</p> <p>Provides assets and support to identify, accelerate and win intelligent cloud competitor migrations in Relational Database, Data Warehousing, Advanced Analytics, Datacenter Transformation IaaS. Requirements: No requirements, but some of the programs within Safe Passage do have requirements.</p>	✓	✓	✓	✓	✓
<p>Azure Access PoC</p> <p>Free Azure sandbox to support customer or partner proof-of-concept (includes Azure Passes and Azure Sponsored accounts). Requirements: Please check with your Microsoft contact for requirement details.</p>		✓			
<p>Azure Everywhere</p> <p>Partner-led engagements to implement low-friction Azure workloads or to increase consumption in existing workloads. Requirements: Non-high potential customers, consuming >\$5k/month; Customers with an active consumption engagement that will drive consumption above \$5k/month; Minimum of 1:10 ROI.</p>		✓	✓	✓	✓
<p>Azure Credit Offer (ACO)</p> <p>Free Azure Credit ("free consumption") for existing and new Enterprise Agreement (EA) customers. Requirements: Please check with your Microsoft contact for requirement details.</p>			✓		
<p>FastTrack for Azure</p> <p>Production deployment services of strategic Azure solutions (Azure 10) for end customers to drive Azure Consumed Revenue and Azure Customer Adds. Requirements: Available only in specific regions. Please check with your Microsoft contact for more requirement details.</p>				✓	✓
<p>Microsoft Azure Planning Services (AZDPS)</p> <p>Helps customers understand what Microsoft Azure can do for their business and identify projects that are best suited for this public cloud offering. Requirements: Software Assurance customer with available Deployment Planning Services (DPS); Must also align with existing DPS scenarios.</p>				✓	



PLEASE READ:

These are investments that partners can leverage subject to meeting investment requirements, funding availability, and Microsoft discretion. Partners must go through their Microsoft contact to request the investment.